

St. David's R.C School

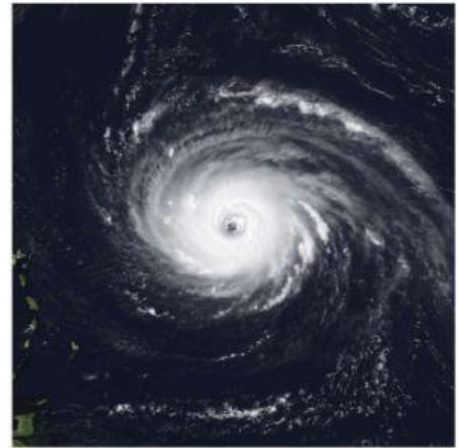
STD 4 Science

Christmas Test Term 1

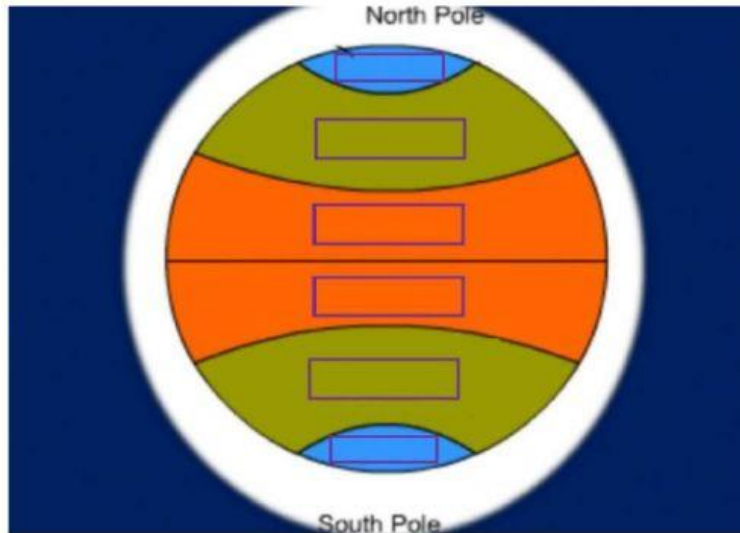
Total 25 marks

Select the correct answer for each question.

1. The hurricane season in Trinidad and Tobago is:
 - a) January to March
 - b) June to November
 - c) October to February
 - d) August to December
2. The centre of the hurricane is called:
 - a) Heart
 - b) Eye
 - c) Oval
 - d) Wind
3. In the centre of the hurricane, it is:
 - a) Snowing
 - b) Windy
 - c) Calm
 - d) Rainy
4. How is climate different from weather?
 - a) Both words means the same thing.
 - b) Climate measures a short period of time. Weather is a longer period.
 - c) Climate is only when it is warm outside.
 - d) Weather measures a short period of time. Climate measures a longer period.
5. Which climatic zone gets the least amount of precipitation?
 - a) Arid Zone
 - b) Temperate Zone
 - c) Polar Zone
 - d) Tropical Zone



6. Label the Earth with the different climatic zones.



North Polar Zone

South Polar Zone

Temperate Zone

Tropical Zone

Temperate Zone

Tropical Zone

7. Polar Zones are cold and dry because they receive

- a) Very little sunlight
- b) A lot of sunlight

8. Match the definitions below.

- a) Electricity flows easily through it.
- b) Electricity doesn't flow easily through it.

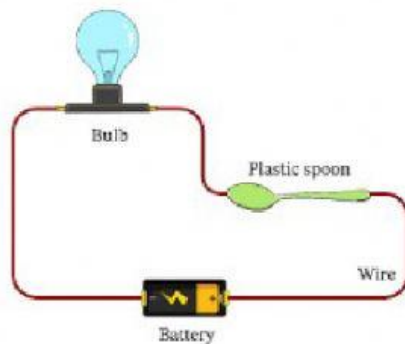
insulator

Conductor

9. State if the pictures below are insulators or conductors.



10.



Let us look at the diagram above.

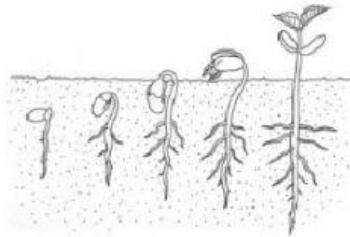
- a) Would the bulb light? Write yes or no _____
- b) If we used a metal spoon, would the bulb light? Write yes or no _____

Agri- Science

11. What is food security?

- a) When the food is safe to eat.
- b) When a person have safe and nutritious food to live a healthy life.
- c) When a person can get food from the security.
- d) When a person can get food from a neighbor.

12. What does ADB stands for?
- a) All the doubles and bread
 - b) Agricultural Development Bank
 - c) Adjustable Development Bank
 - d) Agricultural, Deer and Brands
13. The ADB is for which group of persons to use?
- a) Doctors
 - b) Teachers
 - c) Farmers
 - d) Pilots
14. How long does a red bean seed take to sprout?
- a) 10 minutes
 - b) 10 weeks
 - c) 3 months
 - d) 2-3 days



15. What is the process of the red bean changing from a seed to a plant called?
- a) Filtration
 - b) Evaporation
 - c) Germination
 - d) Condensation

End Of Test