

Name: \_\_\_\_\_

Biology (Spring)  
LP 8, Day 11

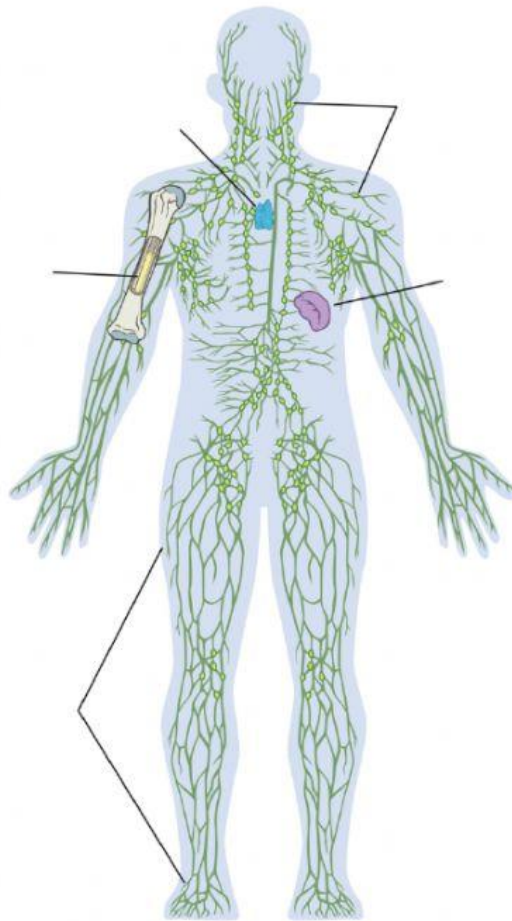
## Immune System

**Directions:** Use your textbook p.939-963 and outside research to help you complete the Immune System study.

**What is the Immune System?**

*On the human body below, label the major parts of the immune system:*

**Bone marrow, lymph nodes, lymph vessels, spleen, thymus**



Name: \_\_\_\_\_

Biology (Spring)  
LP 8, Day 11

## Immune System (continued)

What is the function of the following major components of the immune system?

- **Phagocyte**
- **T cells**
- **B cells**
- **Antibodies**
- **Interferons**

Describe how vaccines work.

Explain innate vs. acquired (adaptive) immunity.

Innate immunity

Acquired (adaptive) immunity

List 5 fun facts about this system.

Describe 2 diseases associated  
with this system.