

# QUIZ 8 (WEEK 8)

## MATHS

I. Match each calculation with its name: (Nối phép tính và tên gọi của nó)

$$1. 200+1500= 1700$$

**A. Subtraction**

$$2. 90:3=300$$

**B. addition**

$$3. 400 \times 3=1200$$

**C. multiplication**

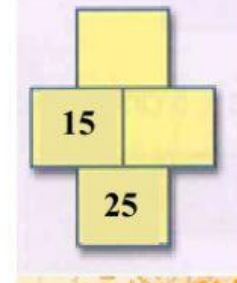
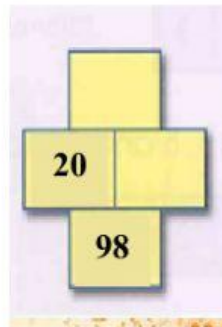
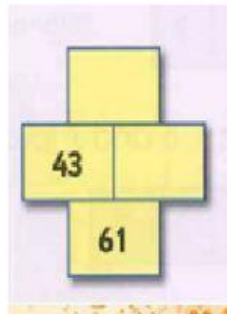
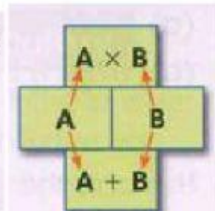
$$4. 678-8=670$$

**D. division**

II. Use evidence provided to find the missing numbers (tìm số còn trống dựa vào gợi ý)

The top number in each pattern is the product of multiplying the two numbers in the middle blocks.

The bottom number in each pattern is the sum of the two middle blocks.



III. Calculate (Tính)

$$34 \times 27 \quad \underline{\hspace{2cm}}$$

$$94 \times 35 \quad \underline{\hspace{2cm}}$$

$$26 \times 56 \quad \underline{\hspace{2cm}}$$

$$58 \times 63 \quad \underline{\hspace{2cm}}$$

IV. Choose the correct answer (Chọn đáp án đúng)

A packet contains 35kg of rice.  
How much rice is in five packets?



**A.  $35-5=30$  (kg)**

**B.  $35:5=7$  (kg)**

**C.  $35 \times 5=175$  (kg)**

**D.  $35+5=40$  (kg)**

## SCIENCE

### I. Fill in the blanks (điền vào chỗ trống).

1. Germination is when a seed starts to grow.
2. Shrink means to become smaller and very dry.
3. Inhale means to take in a substance.
4. Swell means to become larger and rounder.
5. Split means to form cracks.
6. Sapling means a new small plant.
7. Conditions required for the growth of a seed are water, light, soil and air.



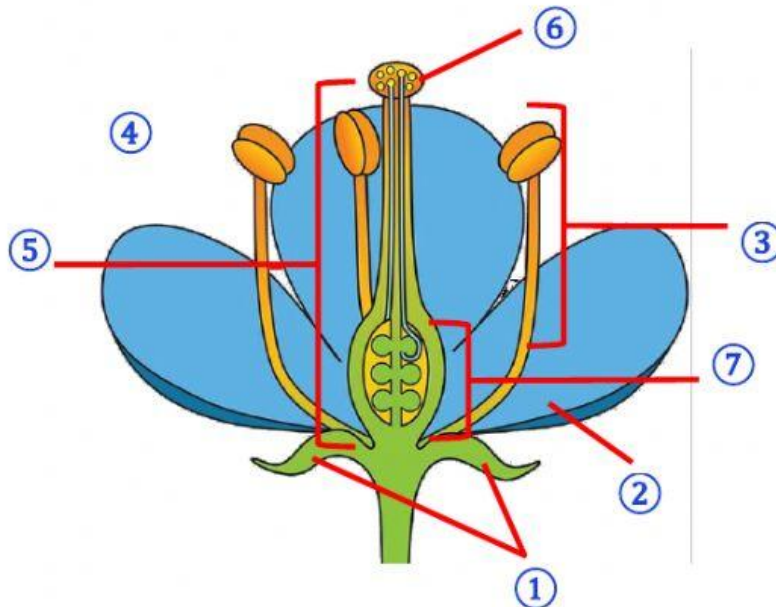
### II. Put each part of a flower to the suitable position. (điền các bộ phận của hoa vào đúng vị trí)

sepals: lá đài  
stamen: nhị hoa

petals: cánh hoa  
ovary: bầu nhụy

carpel: lá noãn  
anther: bao phấn

stigma: đầu nhụy



### III. Choose the correct word for each sentence (chọn từ đúng)

Name the parts of a flower that:

- |                              |        |        |        |
|------------------------------|--------|--------|--------|
| a make pollen                | seed   | stamen | ovary  |
| b protect the flower bud     | sepals | petals | carpel |
| c contain eggs               | anther | carpel | ovary  |
| d attract insects and birds. | sepals | petals | anther |