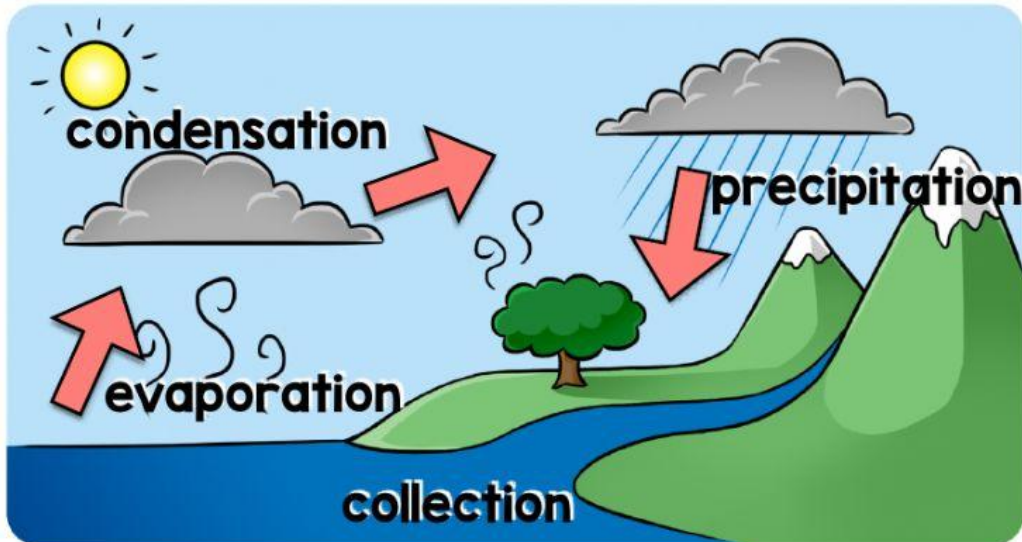


Anchor Chart - Unit 7

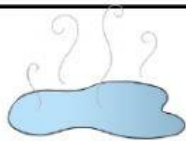
WATER CYCLE



precipitation: water
from sky/clouds



collection: water
collects on the ground



evaporation: water going
up by changing into water vapor



condensation: water
vapor changes into liquid

Level 3

Fill in the answers:

precipitation: water coming from _____.**condensation:** water vapor changes into _____.**collection:** water collects on the _____.**evaporation:** water changing into _____.

Match the system to the function:

condensation

water falling from
clouds

evaporation

water collects on
the ground





collection

water vapor
changes into liquid




precipitation

water changing
into water vaporList 2 things that happen in
the water cycle:

Fill in the circle next to the correct name of each part of the water cycle:

	<input type="radio"/> collection <input type="radio"/> evaporation <input type="radio"/> precipitation		<input type="radio"/> evaporation <input type="radio"/> collection <input type="radio"/> evaporation
	<input type="radio"/> condensation <input type="radio"/> evaporation <input type="radio"/> precipitation		<input type="radio"/> collection <input type="radio"/> evaporation <input type="radio"/> precipitation

Answer the questions:

	What are two types of precipitation? _____ _____
	When you put water on the stove, what happens? _____ _____
	What happens when you leave a cold drink out on a hot day? _____ _____

Circle true or false for each statement:

Snow is precipitation.

true

false

After precipitation, water collects on the ground.

true

false

During condensation, water changes into ice.

true

false

During evaporation, water turns into puddles.

true

false

Follow the directions:

- color the precipitation blue
- color the evaporation grey
- color the collection dark blue
- put arrows in the process of the water cycle

