

# PLICKERS 1 - Digestive System

08 November - 08 November 2021

MISSED

01) What connects the mouth to the stomach?

- A the small intestine
- B the large intestine
- C the esophagus
- D the teeth

MISSED

02) Which organ produces a liquid called bile?

- A the stomach
- B the liver
- C the pancreas
- D the small intestine

MISSED

03) Where are faeces formed?

- A in the liver
- B in the small intestine
- C in the stomach
- D in the large intestine

MISSED

04) What's absorbed in the small intestine?

- A blood vessels
- B bile
- C nutrients
- D gastric juices

MISSED

05) What liquid is food mixed with in the mouth?

- A gastric juices
- B saliva
- C bile
- D blood

MISSED

06) Where does food mix with gastric juices?

- A in the stomach
- B in the liver
- C in the small intestine
- D in the liver

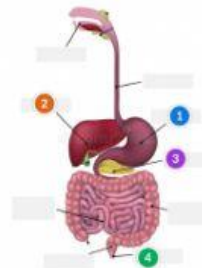
MISSED

07) Where are faeces expelled?

- A in the anus
- B in the small intestine
- C in the rectum
- D in the large intestine

MISSED

09) Label



- A 1)stomach 2)liver 3)pancreas 4)rectum
- B 1)liver 2)stomach 3)bilis 4)rectum
- C 1)stomach 2)liver 3)pancreas 4)anus
- D 1)stomach 2)pancreas 3)liver 4)anus

MISSED

10) The mouth, esophagus and stomach all help our body digest the food we eat.

- A Absorption
- B Digestion
- C Elimination
- D All the options are right

MISSED

11) The most important minerals are

- A red blood cells
  - B vitamins
  - C iron and calcium
  - D sugar and fat
-