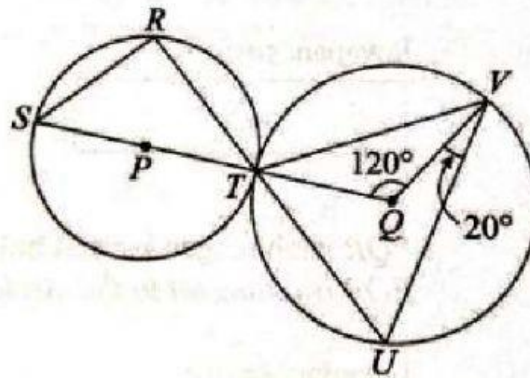


REVISION 11 - Section C (60 marks)
Bahagian C (60 markah)

Instruction : Answer all questions in the space provided. Show your calculation.

Arahan : Jawab semua soalan pada ruangan yang disediakan. Tunjukkan jalan pengiraan anda.

- 26 a) The diagram shows two circles with centres at P and Q. RTU and SPTQ are straight lines.
Rajah di bawah menunjukkan dua bulatan berpusat di P dan Q. RTU dan SPTQ ialah garis lurus.



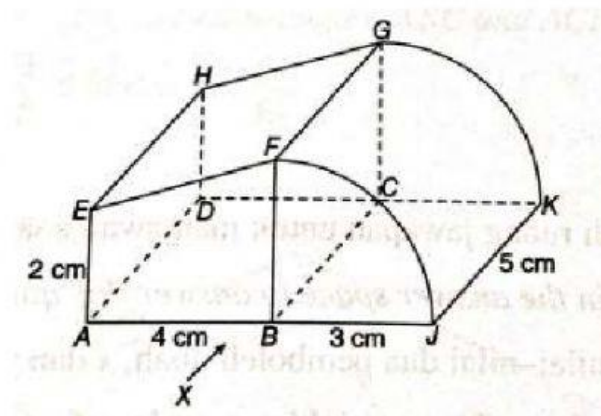
Find the size of each of the following angles.
Cari saiz bagi setiap sudut yang berikut.

Answers/Jawapan :

i) $\angle QTV$ (1 mark/markah)

ii) $\angle RST$ (2 marks/markah)

- b) The diagram shows a composite solid consisting of a prism and a quarter cylinder.
Rajah menunjukkan sebuah pepejal gabungan yang terdiri daripada sebuah prisma dan sebuah sukuan silinder.



Calculate the volume of the composite solid ($\pi = \frac{22}{7}$). Give your answer correct to two decimal place

Hitungkan isipadu bentuk pepejal gabungan tersebut. Berikan jawapan tepat sehingga 2 t.p

Answers/Jawapan :

Quarter cylinder = _____ x _____ x _____² x _____ =

Prism = _____ x (_____ + _____) x _____ x _____ =

Volume of composite shape = _____ =

- b) Mimi's bakery is having a promotion sales on bread and cupcake. One of the offer is shown in the diagram below.

Kedai roti Mimi mengadakan satu promosi jualan roti dan kek cawan. Salah satu daripada tawaran ditunjukkan dalam rajah di bawah.



- a) Based on the above advertisement, write a linear equation.
Berdasarkan iklan di atas, tulis satu persamaan linear.

(let price of 1 bread = RM x and 1 cupcake = RM y)

Answers/Jawapan :

$$+ =$$

(1 mark/markah)

- b) Mimi's bakery is having another offer with 3 cupcakes and a bread which cost RM10.
Calculate the price of a cupcake by using elimination method.
Kedai roti Mimi membuat satu lagi tawaran yang mengandungi 3 biji kek cawan dan seketul roti dengan harga RM10. Hitung harga bagi sebiji kek cawan menggunakan kaedah penyingkiran.

Answers/Jawapan :

$$+ = \text{--- eqn 1}$$

$$+ = \text{--- eqn 2}$$

Eqn 1 x 3

$$+ = \text{--- eqn 3}$$

$$+ = \text{--- eqn 2} \quad \text{eqn 3} - \text{eqn 2}$$

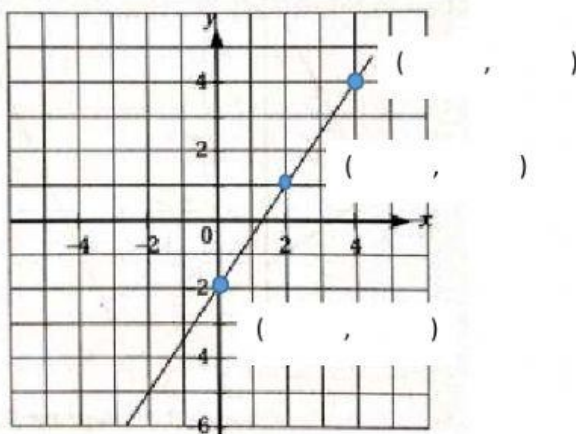
$$=$$

$$y =$$

price of cupcake =

(3 marks/markah)

- 27 a) Diagram shows a straight line on a Cartesian plane.
Rajah menunjukkan suatu garis lurus pada satah Cartes.



- i) determine the coordinate of the three point in the diagram
tentukan koordinat tiga titik dalam rajah
- ii) Find the equation of the straight line.
Cari persamaan garis lurus itu.

Answers/Jawapan :

$$m = \frac{\quad - \quad}{\quad - \quad} = \quad$$

c =

straight line equation is = _____

(2 marks/markah)

- iii) It is given that the coordinates of P is (-8 , -16). Is the point P lies on the straight line in diagram? Prove it.
Diberi bahawa koordinat P ialah (-8 , -16). Adakah titik P terletak pada garis lurus dalam rajah? Buktikan.

Answers/Jawapan :

x =

substitute x = _____ in the straight line equation

$$y = \underline{\hspace{2cm}} (\hspace{2cm})$$

$$y =$$

point P is on the the straight line

(2 marks/markah)

- b) Express $\frac{1}{5p} - \frac{6-2q}{6pq}$ as a single fraction in its simplest form.

Ungkapkan $\frac{1}{5p} - \frac{6-2q}{6pq}$ sebagai satu pecahan tunggal dalam bentuk termudah.

Answers/Jawapan :

$$= \underline{\hspace{4cm}}$$

$$= \underline{\hspace{4cm}}$$

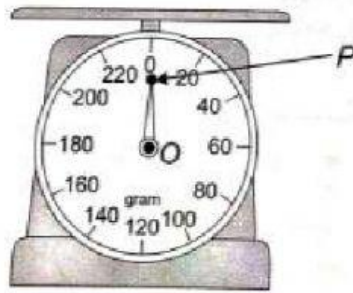
$$= \underline{\hspace{4cm}} (\hspace{2cm})$$

$$= \underline{\hspace{4cm}}$$

(3 marks/markah)

- c) Diagram shows a weight with an OP needle. When an object of 120g is put on the weight, describe in full the transformation of point P.

Rajah menunjukkan sebuah penimbang dengan jarum OP. Apabila satu pemberat 120g diletakkan di atas penimbang itu, huraikan selengkapnya penjelmaan bagi titik P.



Answers/Jawapan :

Transformation of point P is _____ of _____ centre at point _____

(3 marks/markah)