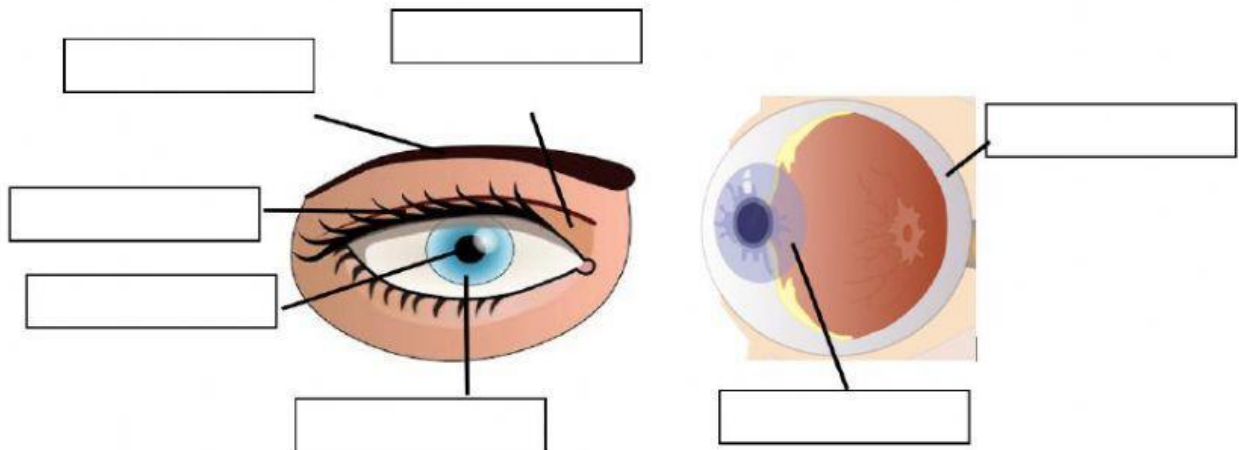


# SENSE OF SIGHT

❖ Drag and drop the different parts of the human eye:

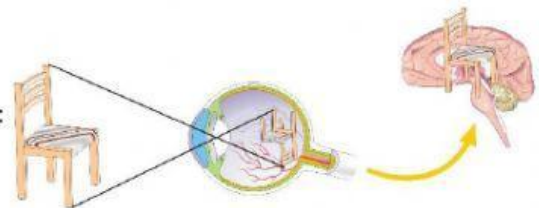
RETINA	EYELID	PUPIL	EYELASHES
IRIS	EYEBROWS	LENS	



❖ For what do the eyelashes, eyebrows and eyelids serve? Choose the right option.

- ☐ To send the information to the brain
- ☐ To protect our eyes from dust and sweat
- ☐ To reflect the light

❖ Drag and drop the process of vision in the correct order:



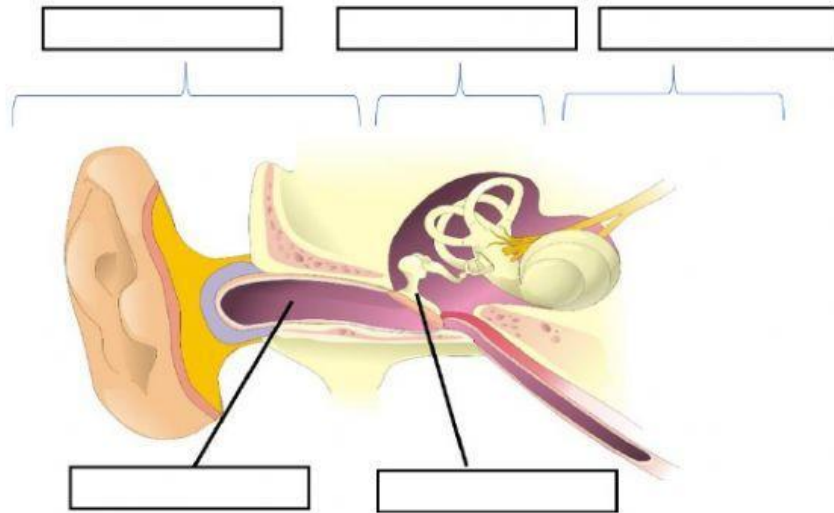
1-	2-	3-	4-

A- The retina sends the information to the brain.	B- Light reflects off an object and enters the eye through the pupil.	C- The brain reads the signal and turns the image right side out.	D- The light goes through the lens and makes an image on the retina which is upside down.
---	---	---	---

# SENSE OF HEARING

❖ Drag and drop the different parts of the human ear

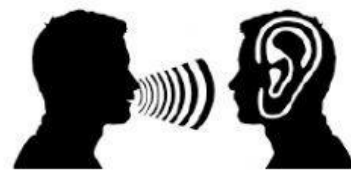
EARDRUM	OUTER EAR	INNER EAR	CANAL	MIDDLE EAR
---------	-----------	-----------	-------	------------



❖ For what does the earwax serve? Choose the right option.

- ☐ To protect your ears from dirt and infection.
- ☐ To protect our eyes from dust and sweat.
- ☐ To sends the information to the brain.





❖ Drag and drop the process of vision in the correct order:



1-	2-	3-	4-

A- The waves hit the eardrum in the middle ear and make it vibrate.	B- The brain reads signals and tells you what you are hearing.	C- The vibration makes the liquid in the inner ear move and send signals to the brain.	D- Sound waves enter through the outer ear.
---	--	--	---

❖ Which sense do you use in each case? Drag and drop:

SENSE OF SIGHT	SENSE OF HEARING