

NAME: _____

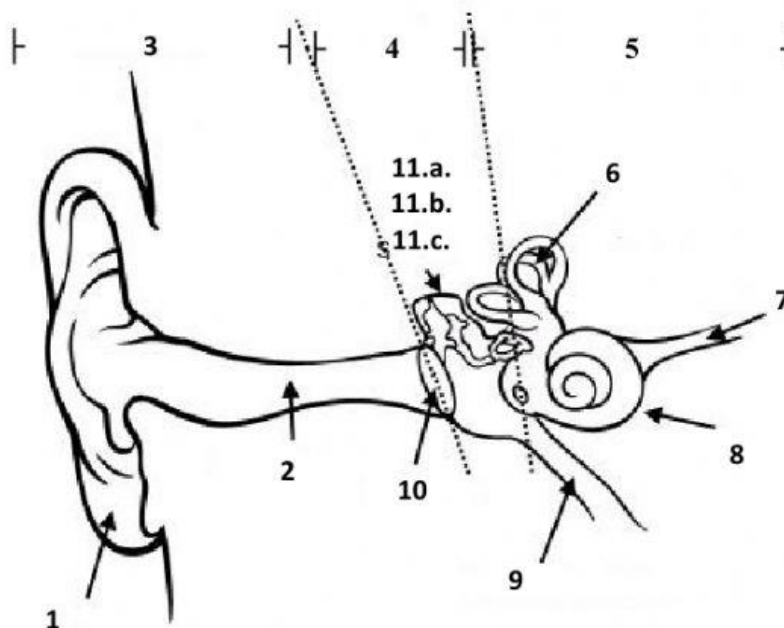
GROUP: _____

THE SENSE OF HEARING

A. PART 1: Match each word with the sentence that corresponds to it:

HEARING	It connects the outer ear and the middle ear; thus, the sound goes through it. It ends at the eardrum.
PINNA	It looks like a snail shell. It receives vibrations from the ossicles and, using some special cells, converts them into electrical signals, which are then transmitted to the auditory nerve.
1) HAMMER, 2) ANVIL & 3) STIRRUP	It is a thin membrane that separates the outer ear and the middle ear. It transmits and amplifies sound vibrations to the ossicles of the ear.
MIDDLE EAR	It transmits sound information from the inner ear to the brain.
AUDITORY NERVE	It connects the middle ear with the throat and helps maintain pressure in the middle ear and the inner ear.
INNER EAR	They are the balance organs. They contain a liquid, small stones (otoliths) and hair cells that move altogether as the person moves.
EARDRUM	Ossicles (small bones) that are in the middle ear and that transfer the sound vibrations from the eardrum to the inner ear.
EAR CANAL	It is the ability to perceive sounds by detecting vibrations using the ears.
SEMICIRCULAR TUBES	It is between the eardrum and the inner ear. It includes the auditory ossicles and the Eustachian tube.
COCHLEA	Its functions are to detect sounds and regulate balance. It contains the cochlea and the semicircular canals. It is connected to the brain through the auditory nerve.
EUSTACHIAN TUBE	It is the outer part of the ear and it is made from cartilage. It catches the sound and directs it to the ear canal.

B. PART 2: Label the parts of the eye by dragging the word to the corresponding number:



Words:

AUDITORY NERVE

INNER EAR

ANVIL

SEMICIRCULAR TUBES

COCHLEA

STIRRUP

EAR CANAL

MALUS

PINNA

EARDRUM

EUSTACHIAN TUBE

OUTER EAR

MIDDLE EAR

Parts:

1. _____

2. _____

3. _____

4. _____

5. _____

6. _____

7. _____

8. _____

9. _____

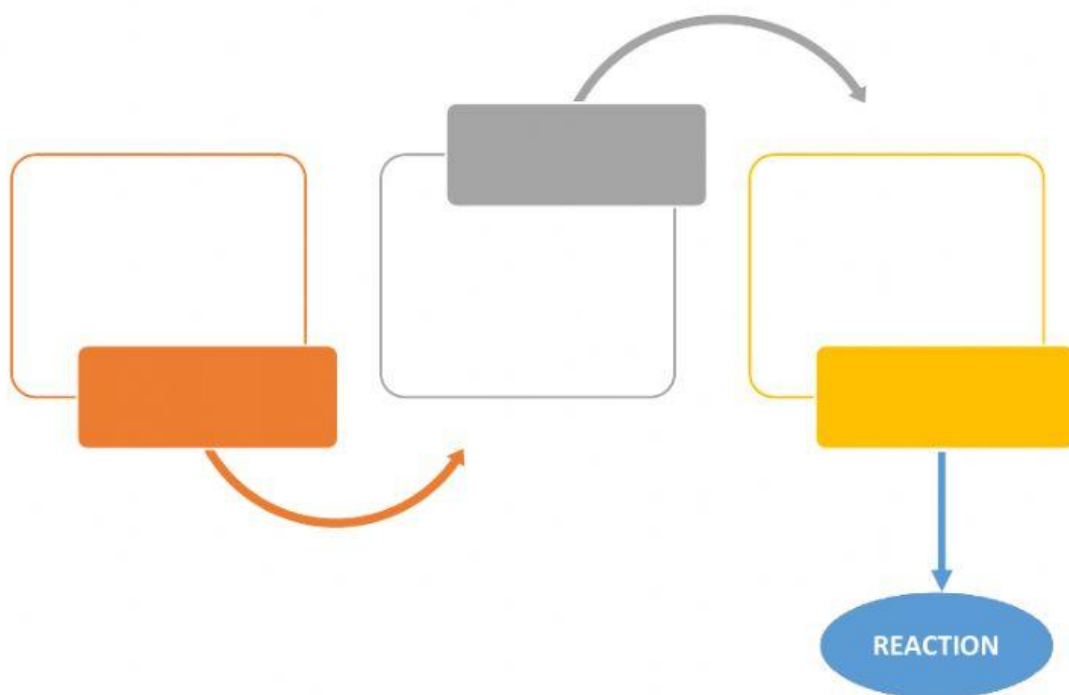
10. _____

11.a. _____

11.b. _____

11.c. _____

C. PART 3: Drag the words and the sentences to complete the diagram with the human visual system (**parts in the smaller rectangles and functions in the larger ones**):



Parts:

AUDITORY NERVE 🦏

BRAIN 🧠

EARS 🦻👂👂

Functions:

It receives the electrical impulses and interprets them.

It receives the sound signals and converts them into electrical impulses.

It conducts the electrical impulses.