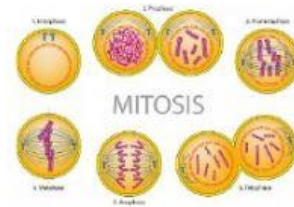


Mitosis Cell division.

Write the number 1- 12 to order the lyrics of this song.



Most cell divisions in your body's system used for your development And old cells that get worn out, mitosis makes perfect copies, ah Let's start with the interphase	
Thanks to the motor proteins Moving along microtubules as molecular machines Oh hello, Mr. Telo (phase!)	
Right before mitosis takes place The DNA within the cell is copied And centrosomes copied, the role this will play is a key	
And now we move to the prophase where chromosomes condense into x-shapes mitotic spindle grows, extends to opposite poles And hey, dissolve the nuclear membrane	
Thinking about cells They can reproduce and divide all by themselves One of two division forms known as mitosis	
And when the cytoplasm splits Concurrent with telophase, it's called cytokinesis	
Metaphase is the next one Chromosomes spindle into the middle and then they're all lined up Every chromosome has two kinetochores	
With microtubules secured to opposite spindle poles Hey, and how we on to the Anaphase When sister chromatids separate	
A mother cell divides into two identical daughters, perfect copy Remember this, two identical copies, Two sets of chromosomes, nucleus DNA	
Almost done dividing into two, then onto cell growth That mitotic spindle disappear And new nuclei start to form here and here	
Metaphase is the next one Chromosomes spindle into the middle and then they're all lined up Every chromosome has two kinetochores	
It's different whether your cell is in plants or animals Just remember after this, you have two identical cells Inter, Pro, Meta Ana, Telophase	