

NAME:  
BIOLOGY REVISION

CLASS:

DATE:

TOPIC: LOCOMOTION, MOVEMENT & SUPPORT

Multiple Choice Questions:

1. The diagram shows a bone from the forelimb. One end of the bone has been replaced with a metal cap.



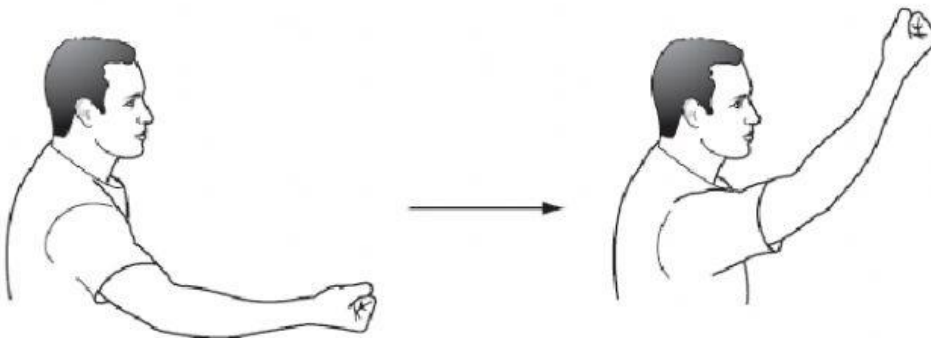
Which bone is this, and which joint does the metal cap repair?

[Nov 2008, Q19]

	Bone	Joint
A	Humerus	Elbow
B	Humerus	Shoulder
C	Ulna	Elbow
D	Ulna	Shoulder

2. The diagram shows an arm movement.

[Nov 2009, Q19]



Which joint is working to allow this movement?

- A A ball and socket joint at the elbow
- B A ball and socket joint at the shoulder
- C A hinge joint at the elbow
- D A hinge joint at the shoulder

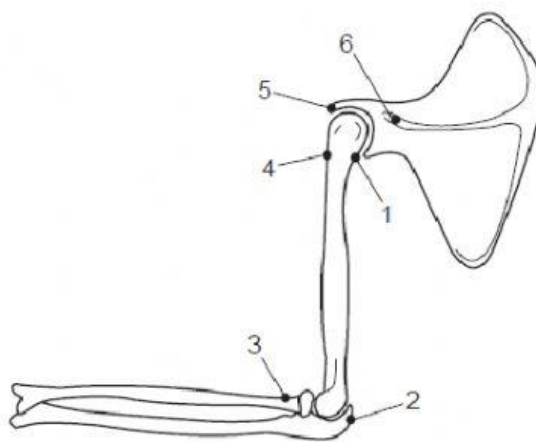
3. Which bones meet at the elbow joint and what kind of movement do they allow?

[Nov 2010, Q40]

	Bones	Movement
A	Humerus and scapula	In one plane only
B	Humerus and scapula	In three planes
C	Ulna and humerus	In one plane only
D	Ulna and humerus	In three planes

4. The diagram shows the bones of the forelimb.

[Nov 2011, Q21]



Which labels show where the muscle that straightens the hinge joint is attached?

- A 1 and 2      B 3 and 4      C 4 and 5      D 4 and 6

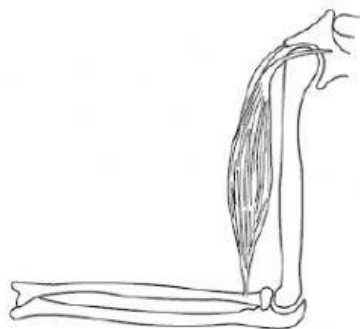
5. How do the biceps and triceps muscles work to straighten the arm?

[Nov 2012, Q23]

- A The biceps contracts and the triceps contracts
- B The biceps contracts and the triceps relaxes
- C The biceps relaxes and the triceps contracts
- D The biceps relaxes and the triceps relaxes

6. The diagram shows the position of a muscle in the forelimb of a human.

[Nov 2013, Q23]

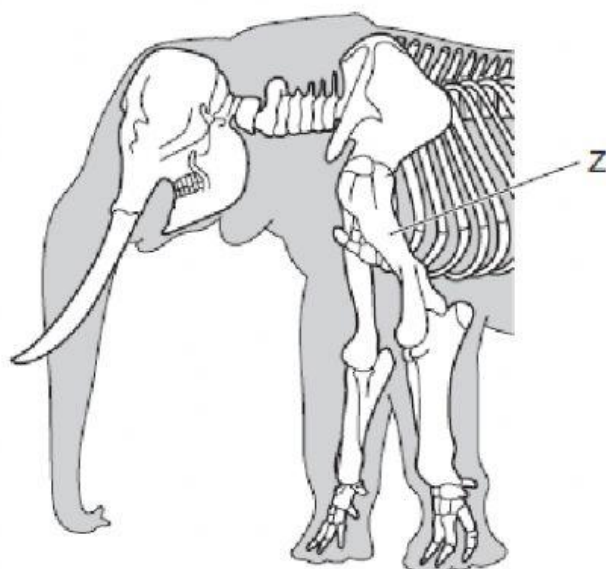


To which bones is the muscle attached?

	Origin (bone <b>not</b> moved)	Extensor or flexor
A	Humerus	Radius
B	Radius	Ulna
C	Scapula	Radius
D	Scapula	ulna

7. The diagram shows part of the skeleton of an elephant.

[Nov 2014, Q24]

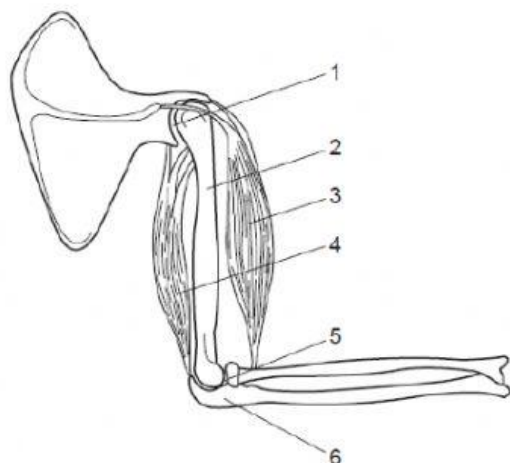


What is the bone labelled Z?

- A humerus      B radius      C scapula      D ulna

8. The diagram shows the main muscles and bones of the arm.

[June 2008, Q19]

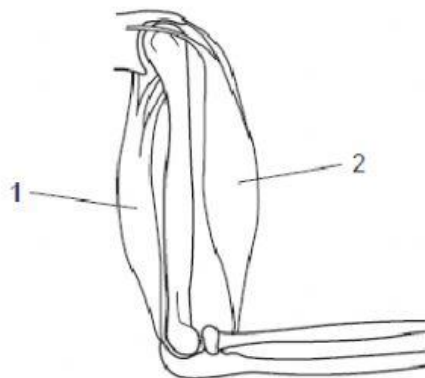


Which lines correctly identify the biceps muscle, the humerus and a hinge joint?

	Biceps	Humerus	Hinge
A	3	6	1
B	4	2	5
C	3	2	5
D	4	6	1

9. The diagram shows the bones and muscles of the forelimb.

[June 2009, Q19]

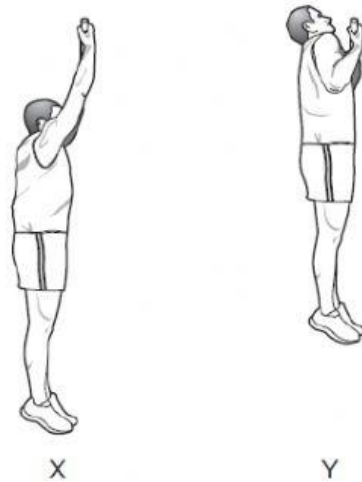


Which structures and functions are used in the straightening of the forelimb at the elbow joint?

	Type of joint used	Muscle 1	Muscle 2
A	Ball and socket	Contract	Relax
B	Ball and socket	Relax	Contract
C	Hinge	Contract	Relax
D	Hinge	Relax	Contract

10. The diagram shows a person doing 'pull ups' on a horizontal bar.

[June 2010, Q13]



In moving from the lower position X to the upper position Y, which muscles and joint movements occur?

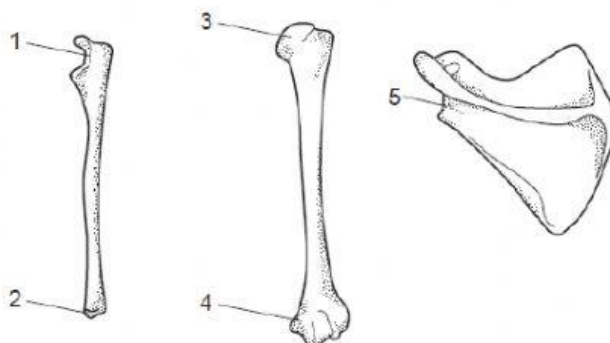
	Biceps	Triceps	Ball and socket joint
A	Contracts	Relaxes	Rotates
B	Contracts	Relaxes	Extends
C	Relaxes	Contracts	Rotates
D	Relaxes	Contracts	Flexes

11. What is the correct sequence of the bones in the arm of a mammal, from the hand to the shoulder?

[June 2011, Q21]

	hand	→	shoulder
A	humerus	radius	scapula
B	humerus	scapula	radius
C	radius	humerus	scapula
D	scapula	radius	humerus

12. The diagrams represent three bones from the forelimb of a human skeleton not drawn to scale.



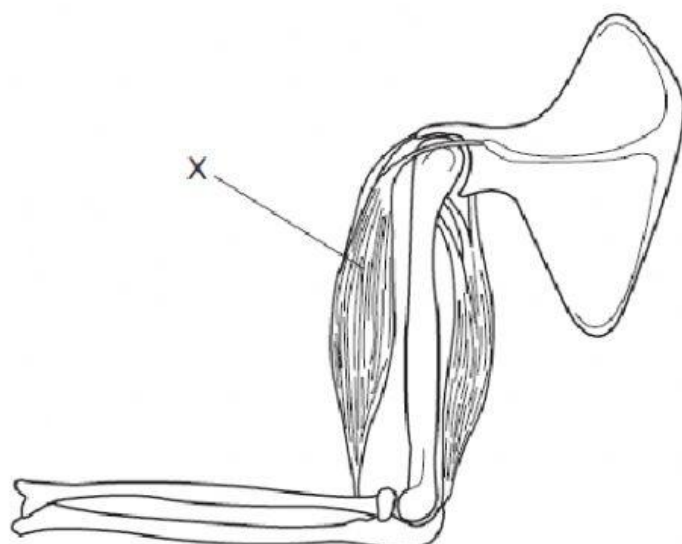
Between which parts will a ball and socket joint be formed?

[June 2013, Q21]

- A 1 and 3      B 1 and 4      C 2 and 5      D 3 and 5

13. The diagram shows parts of the human forelimb.

[June 2014, Q24]



What will happen if a nerve impulse stimulates X?

	Muscle contracted	Effect
A	Biceps	Arm bends
B	Biceps	Arm straightens
C	Triceps	Arm bends
D	Triceps	Arm straightens