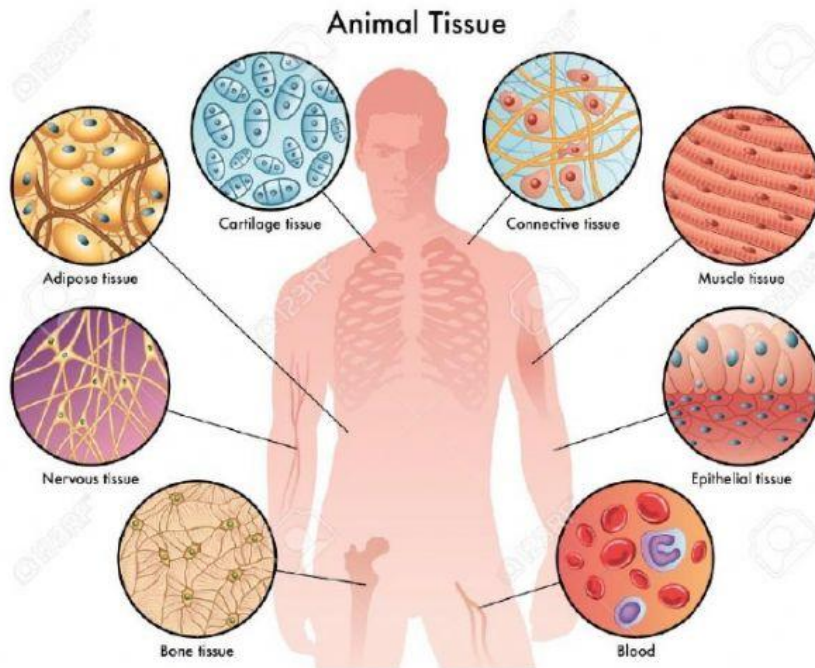


Name: _____

Health Science

Tissues and Organs Match

1. The diagram below shows the various types of tissue in the human body. Write the name of the tissue on the line next to its correct description. (7pts)



- a. _____ this tissue is found mostly as layers
- b. _____ this tissue binds and connect body parts
- c. _____ this tissue lines cavities and tubes, covers the body
- d. _____ blood and Cartilage are examples of this type of tissue
- e. _____ there are three types of this tissue: skeletal, cardiac and smooth
- f. _____ this tissue conducts electrical messages
- g. _____ this type of tissue is made up of lots of calcium and phosphorus

2. Drag the organs in their correctly labelled boxes. [3]

	Kidneys
	Stomach
	Heart

