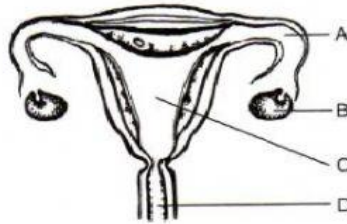


1. In the process of human reproduction, the male sex cell fuses with the female sex cell to form a fertilized egg. What is the term used to describe this process?

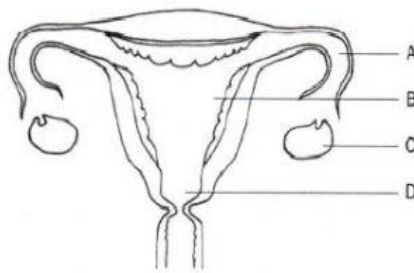
A. Fertilisation.
B. Menstruation.
C. Ovulation.
D. Pollination.

☐

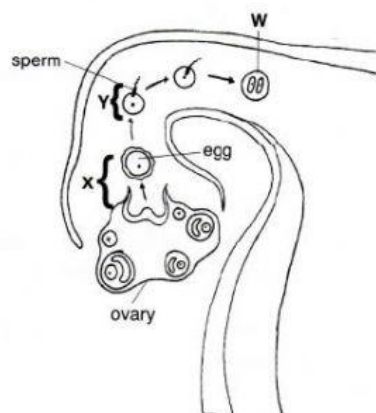
2. Figure below shows the female reproductive system. Where does fertilization occur?


☐

3. At which point will the sperm fuses with the egg to form a fertilized cell?


☐

4. Figure below shows the first stages of sexual reproduction in a human. Name the processes X and Y and the product formed, W.



Process X	Process Y	Product formed, W
-----------	-----------	-------------------

A.	Ovulation	Fertilisation	Zygote
B.	Fertilisation	Menstruation	Ovum
C.	Menstruation	Ovulation	Zygote
D.	Ovulation	Menstruation	Foetus

☐

5. In the female reproductive system, the (1) _____ breaks down and the (2) _____ discharges the blood and dead tissues when an egg is not fertilized.

- | | |
|-------------------|--------|
| (1) | (2) |
| A. uterus lining | uterus |
| B. oviduct lining | uterus |
| C. uterus lining | ovary |
| D. uterus | ovary |

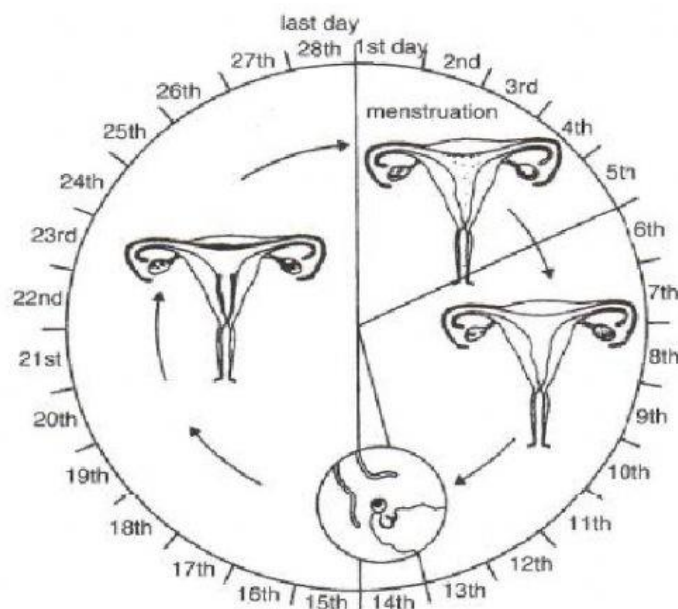
☐

6. Where does implantation of a human embryo usually occur?

- A. Ovary
B. Uterus
C. Vagina
D. Oviduct

☐

7. Study the diagram of the menstrual cycle of a woman in figure below.
(SPE/2012/Q46)



Answer the following questions.

a) i) Which day in the menstrual cycle does the uterus lining begin to break down? [1]

- A. 1st day
- B. 6th day
- C. 14th day
- D. 28th day

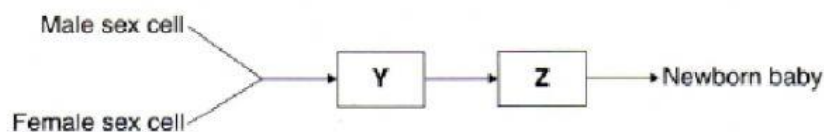
i) When does ovulation take place during the menstrual cycle? [1]

- A. 1st day
- B. 9th day
- C. 14th day
- D. 28th day

b) X is released during the process of ovulation. What is X? [1]

- A. Embryo
- B. Ovum
- C. Sperm
- D. Zygote

c) Figure below shows a simple flowchart on the process of human reproduction.



i) The first stage of the flowchart shows the male sex cell fusing with the female sex cell to form Y. What is the term used to describe this process? [1]

- A. Fertilisation.
- B. Menstruation.
- C. Ovulation.
- D. Pollination

ii) What is Y? [1]

- A. Ovules
- B. Ovum
- C. Sperm
- D. Zygote

iii) Y then develops to form Z. What is Z? [1]

- A. Foetus

- B. Ovum
- C. Sperm
- D. Zygote

☐

iv) How long does the process shown below take place? [1]



- A. 28 days
- B. 14 days
- C. 3 months
- D. 9 months

☐