

# UNIT 2

Verb to Be negative

Parts of the body

Personal equipment

Listenings

## UNIT 1. Present Verb To Be Negative :

Negació Forma Llarga		Negació Forma Curta
I am not	Jo no sóc/estic	I'm not
You are not	Tu no ets/estàs	You're not/ You aren't
He is not	Ell no és/està	He's not/ He isn't
She is not	Ella no és/està	She's not/She isn't
It is not	Objecte o animal (allò no és/està)	It's not/ It isn't
We are not	Nosaltres no som/estem	We're not/ We aren't
You are not	Vosaltres no sou/esteu	You're not/ You aren't
They are not	Ells no són/estan	They're not/ They aren't

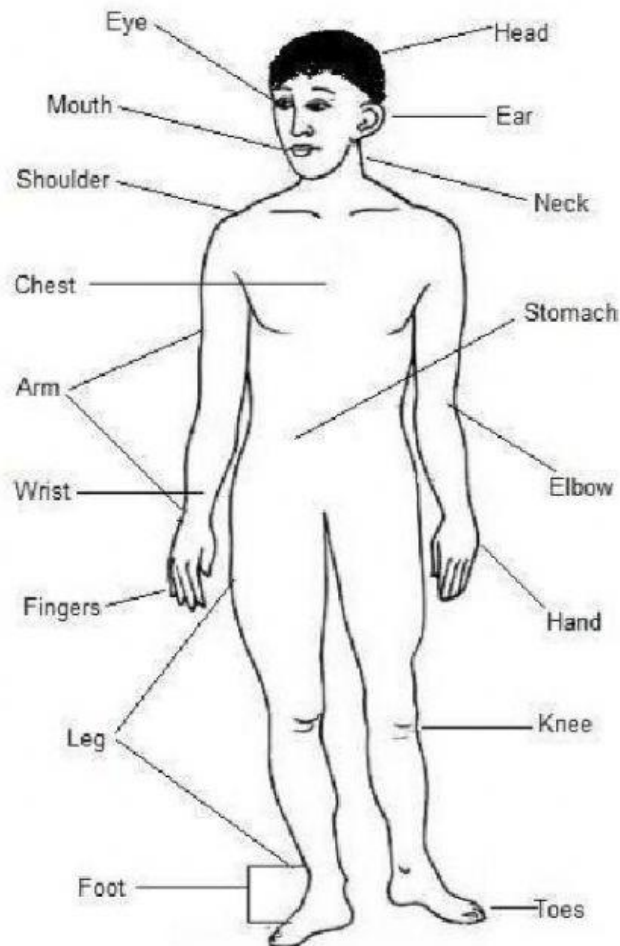
1. Completa fent la negació del verb To Be fent ús de la *forma llarga*.

- I **am not** an English student.
- You                      a good person.
- We                        angry.
- He                        a teacher.
- The car                 black.
- Lissa                    tall.
- The movie             funny.

2. Fes la negació de les següents frases fent ús de la *forma curta*.

- I'm a teacher                      **I'm not a teacher**
- You're a funny person
- We are from Spain
- She is at home every day
- It's very cold

## 2. Parts of the body:



Labeled Human Body

1. Write the correct body words:

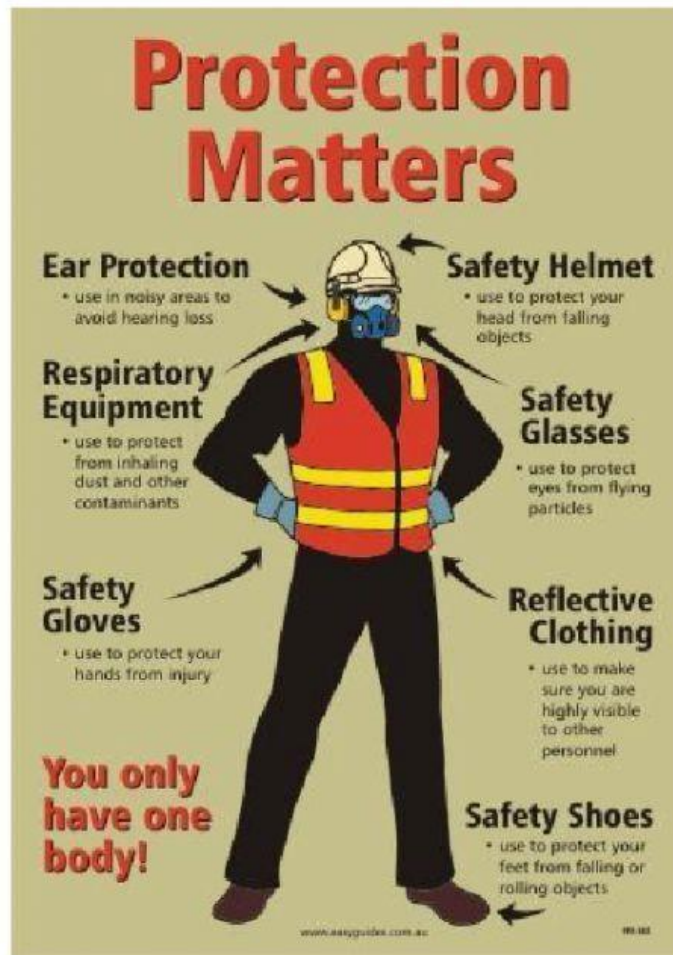
a) NEEK <b>knee</b>	f) YEE	<input type="text"/>
b) MAR	g) THOUM	<input type="text"/>
c) TOOF	h) ARE	<input type="text"/>
d) BOWEL	i) CESTH	<input type="text"/>
e) MACHSTO	j) DHAN	<input type="text"/>

2. Troba les 8 parts del cos de les imatges de sota el requadre:

E	Q	E	K	N	E	E	R	M
Y	T	U	P	O	I	A	D	O
E	F	E	A	R	G	H	J	U
J	K	L	Z	X	C	A	V	T
B	N	M	D	F	O	R	A	H
H	A	N	D	R	Q	M	Z	X
M	H	E	A	D	C	F	D	S
A	S	F	L	E	G	V	G	T



### 3. Personal Protective Equipment



1. Escriu el nom de cada EPI:



2. Arrosega les etiquetes de sota a la seva descripció

Use to protect your <b>ears</b> in noisy areas to avoid hearing loss	EAR PROTECTION
Use to protect your <b>feet</b> from falling or rolling objects	SAFETY SHOES
Use to protect your <b>eyes</b> from flying particles	
Use to protect your <b>hands</b> from injury	
Use to protect your <b>head</b> from falling objects	
Use to protect from inhaling dust and others contaminants	
Use to make sure you are highly visible to other personnel	

RESPIRATORY EQUIPMENT	SAFETY GLASSES	REFLECTIVE CLOTHING
SAFETY GLOVES	SAFETY HELMET	



## Listenings

1. **Escolta** les frases o les paraules, i esculla la correcta. **Tradueix** al costat

- a) *I'm a teacher / I'm not a teacher*
- b) *We are angry / We are not angry*
- c) *It's very cold / It isn't very cold*
- d) *We aren't from Spain / We're from Spain*
- e) *eye / ear / hand*
- f) *foot / toes / arm*
- g) *chest / elbow / fingers*
- h) *mouth / neck / shoulder*
- i) *leg / knee / wrist*
- j) *stomach / hand / head*
- k) *safety glasses / safety gloves / safety shoes*
- l) *ear protection / safety helmet / respiratory equipment*