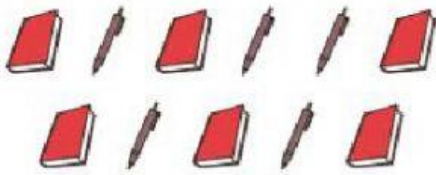


Ratio in Three Ways: Part to Part Level 1

Directions: Point to or draw a line from the picture to the correct ratios.

1) books to pens



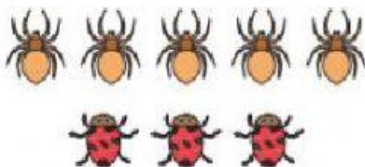
5 to 3	5:3
	5/3

2) pumpkins to cabbages



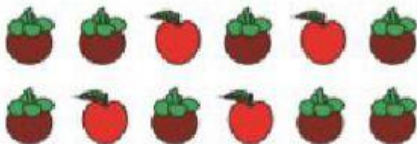
6 to 5	6:5
	6/5

3) spiders to ladybugs



2 to 6	2:6
	2/6

4) apples to mangosteens



2 to 7	2:7
	2/7

5) snow cones to chocolates



4 to 8	4:8
	4/8