

Name: _____

Date: _____

Mock 2 Examination 2014 (Paper 1)

Choose the correct answer and write the LETTER (A, B, C OR D) in the answer box provided.
(10 marks)

1. The moon takes _____ to revolve round the Earth.

- A. 24 days
- B. 28 days
- C. 20 days
- D. 30 days

2. Most asteroids orbit around the Sun in between _____ and _____.

- A. Mars, Jupiter
- B. Earth, Mars
- C. Mercury, Venus
- D. Uranus, Neptune

3. _____ is the planet that has 13 moons.

- A. Neptune
- B. Earth
- C. Saturn
- D. Jupiter

4. The Sun rises in the _____ and sets in the _____.

- A. North, South
- B. West, East
- C. East, West
- D. South, North

5. _____ is our main source of heat and light energy.

- A. Moon
- B. Planets
- C. Sun
- D. Asteroids

6. A thermometer measures temperature in _____.

- A. Celsius
- B. Watt
- C. Kilogram
- D. Litre

☐

7. Food such as the rice, bread and potatoes are high in _____.

- A. Proteins
- B. Cholesterol
- C. Carbohydrate
- D. Vitamin

☐

8. A young of a plant is also known as _____.

- A. Nursery
- B. Seedling
- C. Baby plant
- D. Nestling

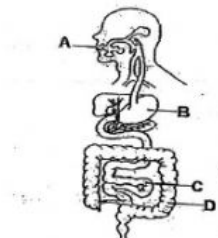
☐

9. The heart and the _____ are protected by the ribcage.

- A. stomach
- B. nails
- C. lung
- D. nestling

☐

10. Which part labelled below
is the stomach?

☐

11. Which part of the body controls breathing, heartbeat, movement and all the sense organs in our body?

- A. Brain
- B. Heart
- C. Rectum
- D. Spinal cord

☐

12. The process where plant make food is called _____.

- A. solvent
- B. conservation
- C. photosynthesis
- D. organisms

☐

13. Why the banana plant cannot grow from seed?

- A. Because a banana plant grows from leaves.
- B. Because a banana plant grows from the roots.
- C. Because a banana plant grows from underground stem.
- D. Because a banana plant never dies.

☐

14. Which of the following helps us to prevent us from getting influenza?

- A. Share infected person's belongings
- B. Share towels from infected person
- C. Use infected person belongings
- D. Use your own belongings

☐

15. Tiger, _____ and platypus are examples of mammals.

- A. iguana
- B. anteaters
- C. crocodile
- D. emu

☐

16. There are _____ days in a leap year.

- A. 366
- B. 365
- C. 364
- D. 363

☐

17. _____ are large lumps of ice and dust that orbit the Sun.

- A. Asteroids
- B. Orbit
- C. Earth
- D. Comets

☐

18. Figure 1 below shows the phases of the moon. Which one is a crescent moon?



A

B

C

D

19. The Earth is _____ million kilometers from the Sun.

- A. 120
- B. 100
- C. 105
- D. 150

20. _____ is the smallest planet in the solar system.

- A. Mars
- B. Mercury
- C. Venus
- D. Earth

21. The solar heater is more economical than the electric heater because it _____.

- A. uses petroleum
- B. does not require any forms of energy
- C. uses word
- D. uses energy from the Sun

22. Electrical energy used in the home comes from two sources. They are _____.

- A. generator and dry cell
- B. main and electric cell
- C. solar cell and petroleum
- D. dry cell and solar cell

23. Light bulb, switches, electric cells and wires are examples of _____.

- A. electrical appliances
- B. electrical machines
- C. electrical toys
- D. electrical components

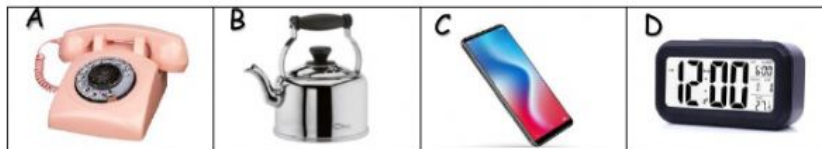
☐

24. Which part of the electric circuit is used to stop current from flowing through _____

- A. switch
- B. dry cell
- C. bulb
- D. wire

☐

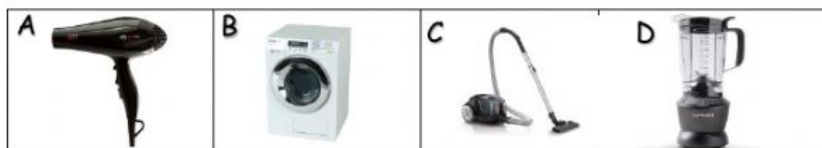
25. Which of the following objects below DO NOT use a buzzer?

☐

26. Which of the following uses a system of pulleys?

☐

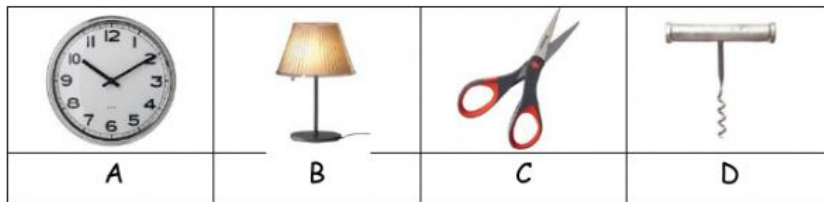
27. Which of the following objects use motors?



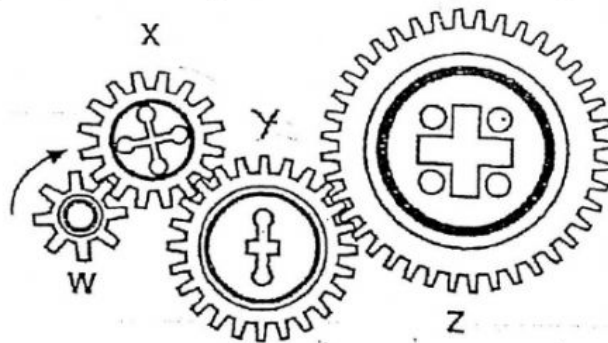
- A. A, C and D
- B. A, B and D
- C. A, B and C
- D. All of the above

☐

28. Which of the following uses BOTH gears and a wheel and axle in the same simple machine?


☐

29. The following diagram shows four gears. If W turns clockwise, which statement below is TRUE?



- A. Gear W and Gear Y turn in the same direction
- B. Gear X turns faster than Gear W
- C. Gear Z turns the fastest
- D. Gear X and Y turn at the same speed

☐

30. The thread of a screw is a/an _____.



- A. Inclined plane
- B. Lever
- C. Pulley
- D. Wheel and axle

☐

