

PARTIAL EVALUATION INSTRUMENT

| 1. INFORMATIVE DATA | | | | | |
|---------------------|-----------------|-----------|-------------------|------------|-----------------|
| Type: | Certification | Area/Axe: | EFL | Level: | Basic |
| Class: | Summative | Subject | Science | Sub-level: | Middle |
| Quimestre: | 1 st | Teacher: | Cristhian Villota | Grade: | 3 th |
| School year: | 2021-2022 | # Unit: | 1 st | Section: | A |
| Student: | | | | Date: | |

| 2. INSTRUCTIONS |
|--|
| 1. Read carefully the raised questions. 2. If you have difficulty in answering any questions, move on to the next one, DO NOT LOSE TIME. 3. Use only a blue ink pen to perform the evaluation. 4. Avoid amendments (patches, corrections, blots) because the answer will be VOIDED. 5. Demonstrate academic honesty during the performance of the evaluation and avoid disciplinary educational actions Art. 224 (Type II) / Art. 330 (5). |

| MOTIVATING PHRASE: "The secret of getting ahead is getting started." – Mark Twain | |
|---|--|
| 3. EVALUATION COMPONENTS | |
| Skills and performance criteria | Communication and cultural awareness, reading, writing. |
| Performance Indicator | - Students can recognize Vertebrate Animals - Students can identify which are MAMMALS; FISH; AMPHIBIANS; REPTILES - Students can write the parts and characteristics of VERTEBRATE ANIMALS |
| Evaluative activity | - Read and solve the following activities |

Vocabulary: It is a set of familiar words usually developed with age, serves as a useful and fundamental tool for communication and acquiring knowledge.

1. Circle the correct answer: Animals that have bones inside of their body are _____

- invertebrates
- vertebrates



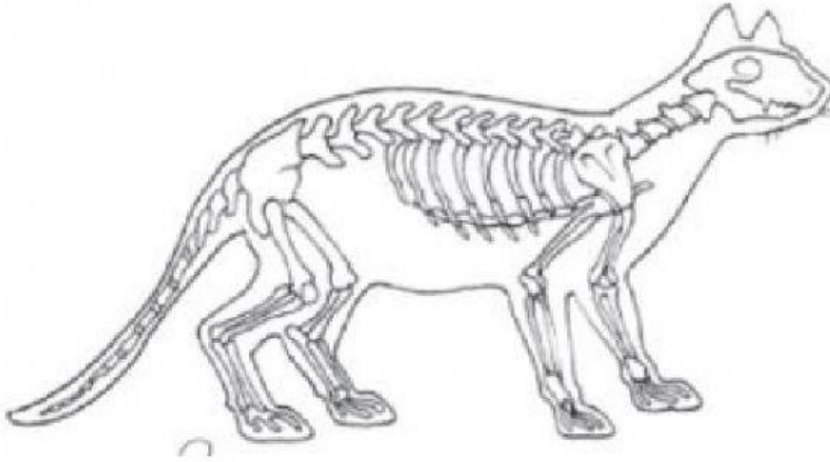
2. Select to complete the sentence: *A fish can move and swim because of their _____*

- fins
- gills
- tail

Vertebrate Animals are the group which have bones inside of their body.

3. Color the parts of the body in the next animal.

Yellow ----- head blue----- legs red-----body



4. Select the correct option: Which is a dangerous vertebrate animal?



5. Underline the correct sentence

-MAMMALS ARE THE GROUP WHICH THEY ARE BORN FROM A MOTHER

-MAMMASL ARE THE GROUP WHICH THEY ARE BORN FROM EGGS

Reptiles are a group of cold-blooded animals which have skins covered with small hard plates called scales and lay eggs.

6. Pick out the correct answer:

- REPTILES ARE COLD-BLOODED ANIMALS
- REPTILES ARE WARM-BLOODED ANIMALS

7. Circle the correct animal: It is a Reptile!



Amphibians cold-blooded vertebrate animals of a class that comprises the frogs, toads, newts, and salamanders. They are distinguished by having an aquatic gill-breathing larval stage followed (typically) by a terrestrial lung-breathing adult stage.

8. Choose the correct option: Amphibian is a _____

- fish
- frog
- snake

Vocabulary: It is a set of familiar words usually developed with age, serves as a useful and fundamental tool for communication and acquiring knowledge.

9. Pick the correct option: How do you say in English: RANA

- TOAD
- SOAP
- FROG

10. Pick out the best answer: If the animal has wings and can fly, it is a _____.

- mammal.
- fish.
- bird.

| 6. VALIDATION | | |
|---|---|---|
| DESIGNED BY: | REVISED BY: | APPROVED BY: |
| TEACHER: Tgnlo. Cristhian Villota | ENGLISH COORDINATOR: LIC. Manuel Orozco Arevalo | PRINCIPAL: M.Sc. Yomara Rosales |
| DATE: October 4 th , 2021 | DATE: October 5 th , 2021 | DATE: October 6 th , 2021 |
| SIGNATURE: | SIGNATURE: | SIGNATURE: |

| PARENT\L. REPRESENTANT: | STUDENT'S SIGNATURE: |
|-------------------------|----------------------|
| DATE: | |
| SIGNATURE: | |