



G4 EXIT TICKET



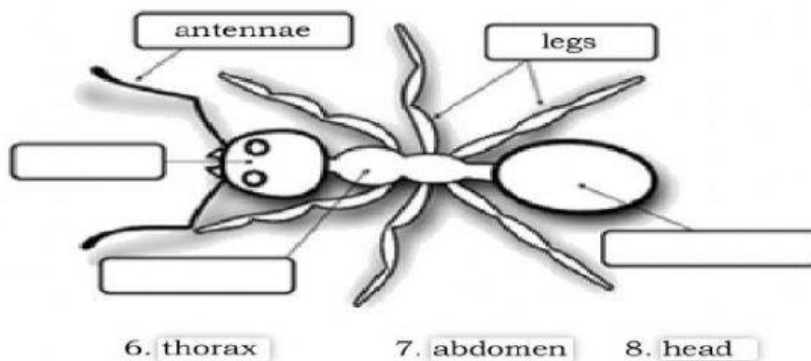
INVERTEBRATES

I. Complete each sentence with the correct word from the word bank.

exoskeleton	three	mollusc	six	invertebrates	two
-------------	-------	---------	-----	---------------	-----

1. Animals with no backbone are called _____.
2. The _____ protects and gives body support.
3. Insects have _____ body segment.
4. Conch is member of the _____ group.
5. Spiders have _____ body segment.

II. Write the names of the missing parts.



9. Identify one way that spiders and insects are alike and one way are different.

10. Stacy and her brother Carl see an animal in her room. It had eight legs and was covered with hair. Stacey thinks it was butterfly her brother insist that it's a spider. Who is correct? Explain your answer.

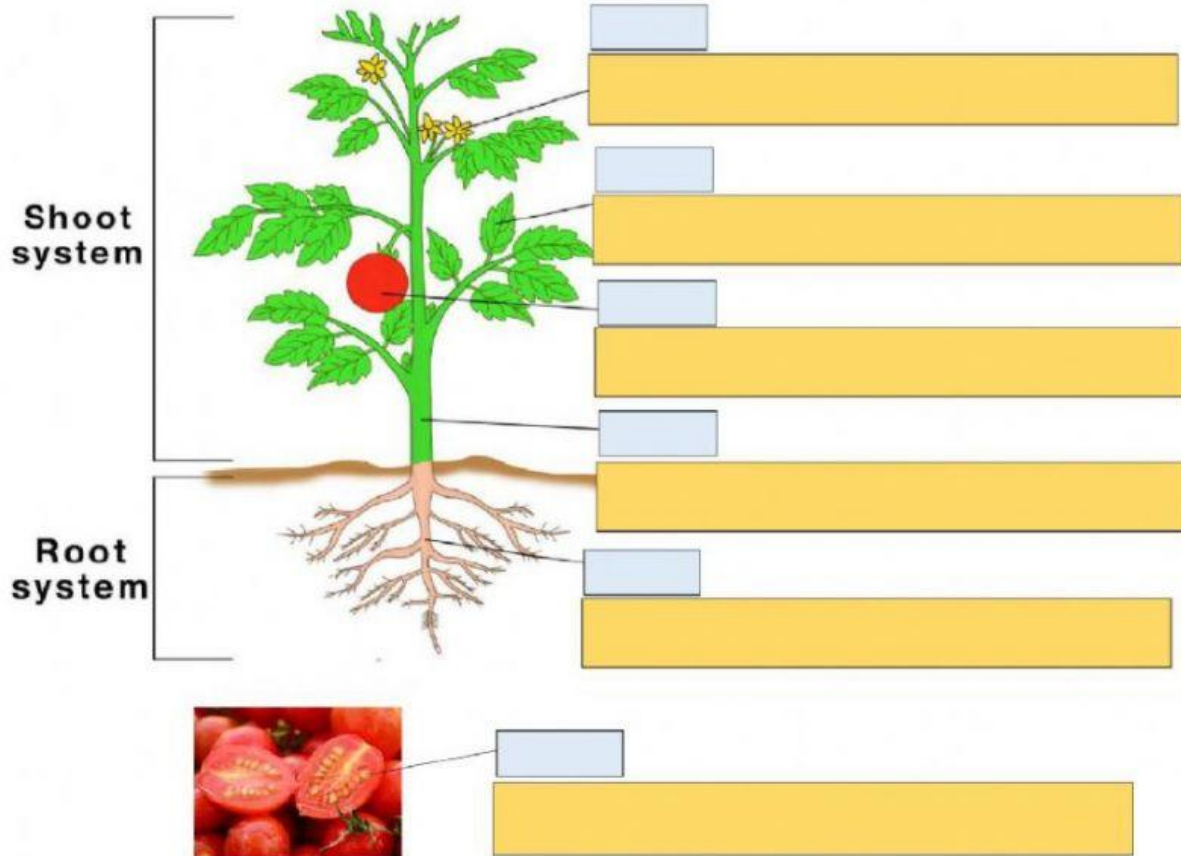


G4 EXIT TICKET

★ PLANT LIFE

Parts of a plant and its functions

DRAG AND DROP!



STEM FLOWER ROOTS FRUIT SEEDS LEAF

It helps hold the plant in the soil. The plant takes nutrients and water through them.

It holds the plant upright. It supports it. It holds the leaves upright, too. It carries water and nutrients from the roots to the leaves and flowers.

It takes in sunlight. It performs photosynthesis.

It helps in reproduction. It is the part of the plant that makes the seeds.

They contain the plant's embryo. They store food that the embryo will need for germination. They have a protective coat.

It protects the seeds.

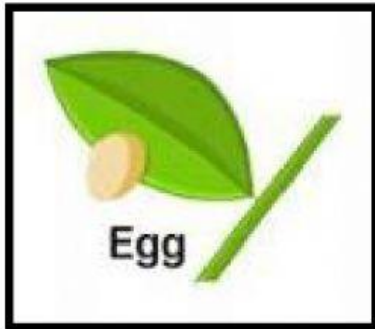


G4 EXIT TICKET

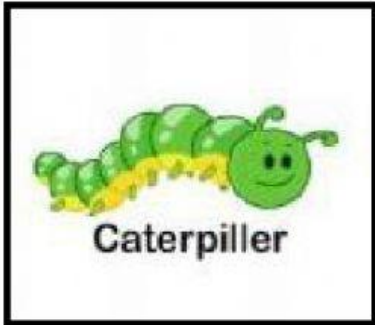
★ LIFE CYCLE

LIFE CYCLE OF A BUTTERFLY

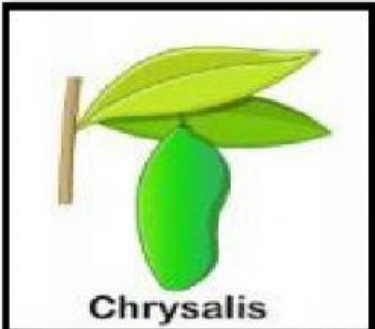
Explain and write sentences in each stages.



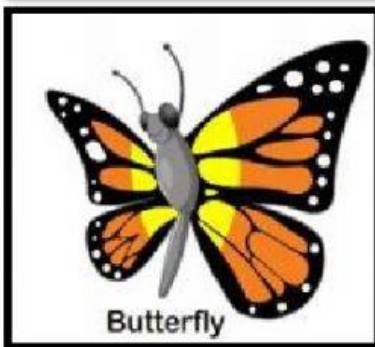
First, _____



Next, _____



Then, _____



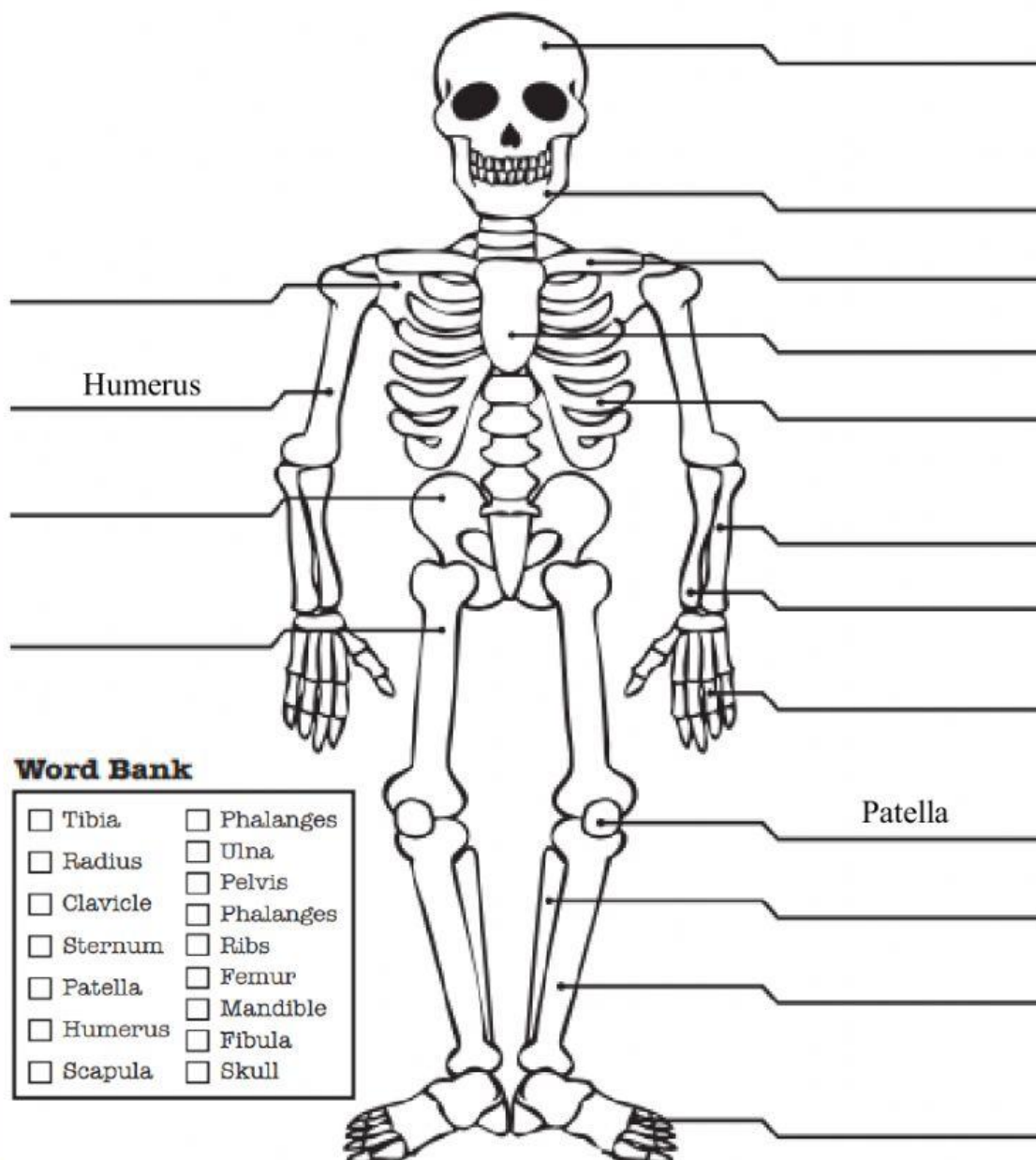
Last, _____



★ THE HUMAN BODY

The Skeletal System

Use the given word bank to name the indicated parts of the skeletal system.



Word Bank

- | | |
|-----------------------------------|------------------------------------|
| <input type="checkbox"/> Tibia | <input type="checkbox"/> Phalanges |
| <input type="checkbox"/> Radius | <input type="checkbox"/> Ulna |
| <input type="checkbox"/> Clavicle | <input type="checkbox"/> Pelvis |
| <input type="checkbox"/> Sternum | <input type="checkbox"/> Phalanges |
| <input type="checkbox"/> Patella | <input type="checkbox"/> Ribs |
| <input type="checkbox"/> Humerus | <input type="checkbox"/> Femur |
| <input type="checkbox"/> Scapula | <input type="checkbox"/> Mandible |
| | <input type="checkbox"/> Fibula |
| | <input type="checkbox"/> Skull |