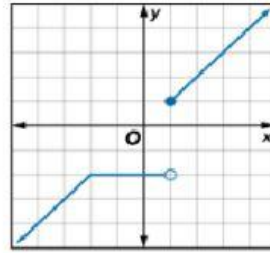


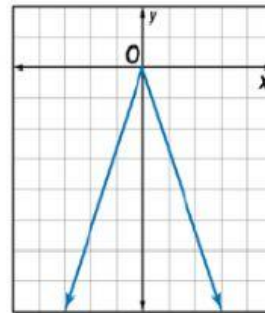
Lesson (2-4) Algebra 2

Identify the type of function represented by the graph.



- A. linear
- B. piecewise-defined
- C. absolute value
- D. parabolic

Identify the type of function represented by the graph.



- A. greatest integer
- B. linear
- C. quadratic
- D. absolute value

The function $f(x) = \begin{cases} 5x, & \text{if } x < 8 \\ 8.5x - 1, & \text{if } 8 \leq x < 16 \\ 12x + 4, & \text{if } x \geq 16 \end{cases}$

gives the amount of money earned for working x hours. How much will an employee earn for working 12 hours?

- A. \$60
- B. \$101
- C. \$102
- D. \$148