

Choose the correct answers by referring to the situations given.



The air in the drinking bottle _____ when it _____ from the hot water.
This causes the bottle cap to pop off.



When the ice cubes are put into the glasses, the glasses will _____ because they _____. Thus, the overlapping glasses can be separated.

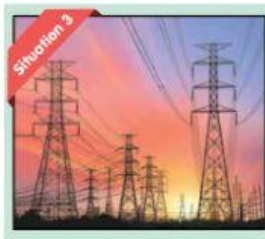


Gaps between connectors on a metal bridge

The gaps between metal connectors on the bridge allow the bridge to _____ when the temperature of the surrounding increases.



The gaps between the connectors on a railway track allow the track to _____ when the temperature of the surrounding increases.



The electric cables are hung loosely between the electric poles to allow the wires to _____ when the temperature decreases.