

# Time Past The Hour

We say that time is past the hour when the minute hand (long hand) is between 12 and 6.



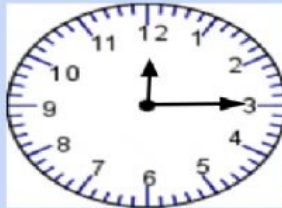
 **LIVEWORKSHEETS**

## TIME BY FIVE MINUTE INTERVALS

Write the time shown on the clocks.



ten minutes past five



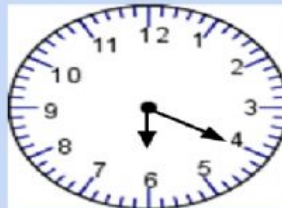
Write here



Write here



Write here



Write here



Write here

 **LIVEWORKSHEETS**

# WRITE THE FOLLOWING IN DIGITAL FORM

Example:

twenty minutes past two - 2:20

a. one o' clock - Write here

b. twenty five minutes past seven - Write here

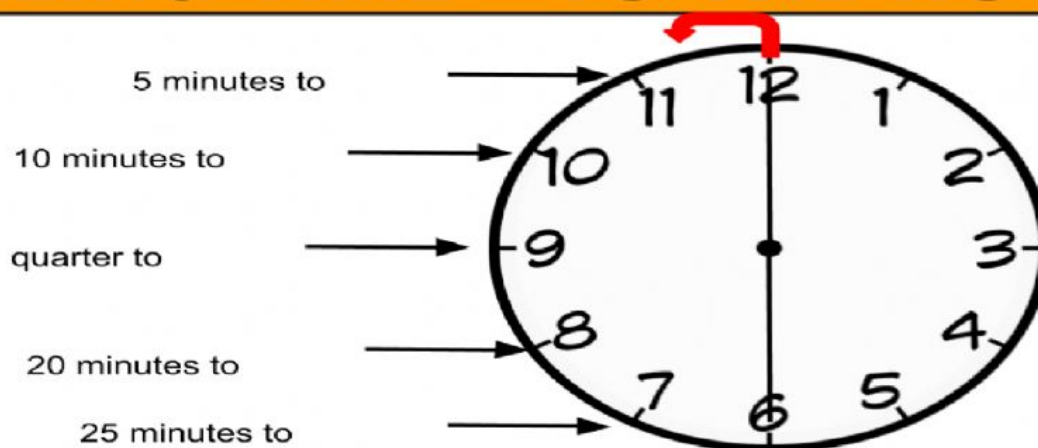
c. half past three - Write here

d. ten minutes past four - Write here

e. thirty minutes past five - Write here

LIVEWORKSHEETS

## TELLING TIME - TO THE HOUR



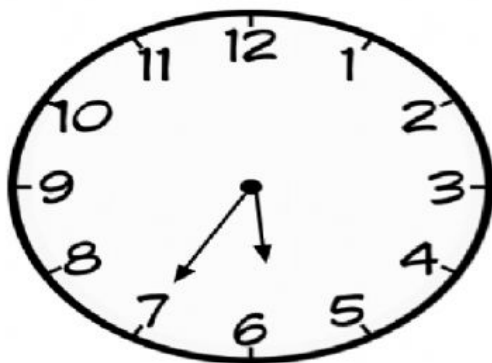
### REMINDERS -

15 (fifteen) minutes to is ,quarter to'

Count by 5's from 12 in the anticlockwise direction for the part of the clock face showing 'to the hour'

LIVEWORKSHEETS

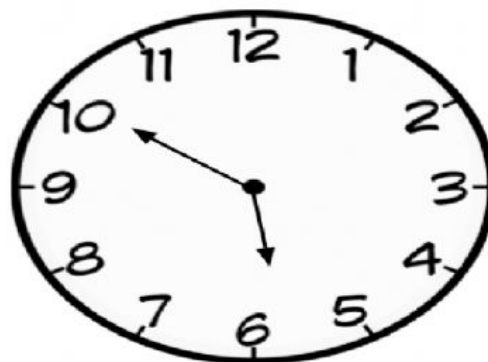
# TIME TO THE HOUR



**Clock C shows:**

twenty-five minutes to six  
OR

5: 35



**Clock D shows:**

Ten minutes to six  
OR

 **LIVEWORKSHEETS**

## TELLING TIME TO THE HOUR - PRACTICE

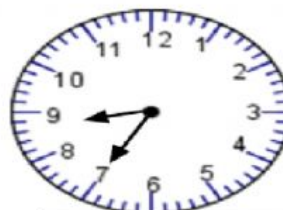
Write the time shown on the clock?



Write here



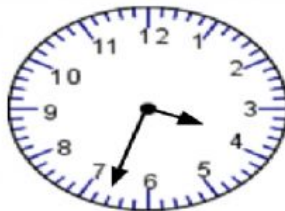
Write here



Write here



Write here



Write here



Write here

 **LIVEWORKSHEETS**