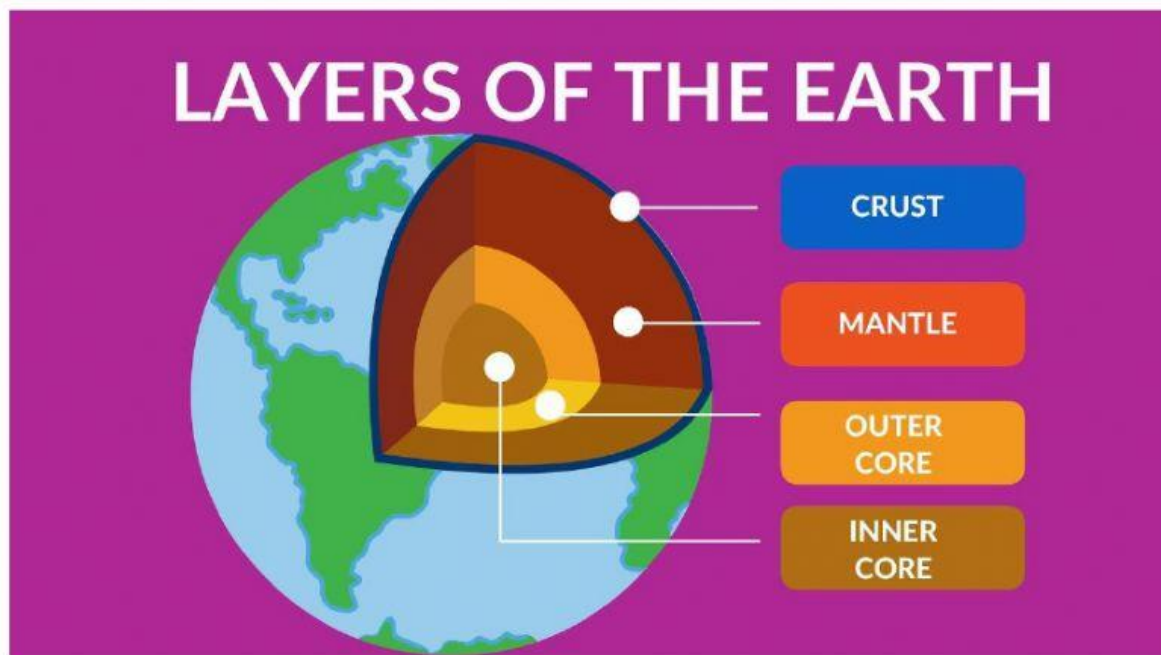


Internal structure of Earth



Earth has four layers that are-

1. Crust
2. Mantle
3. Outer core
4. Inner core

Earth's Layers

- How are the earth's layers similar to an egg?
- Shell=crust
- Egg white=mantle
- Yolk=core



Earth is divided into three main layers they are-

Crust

Mantle

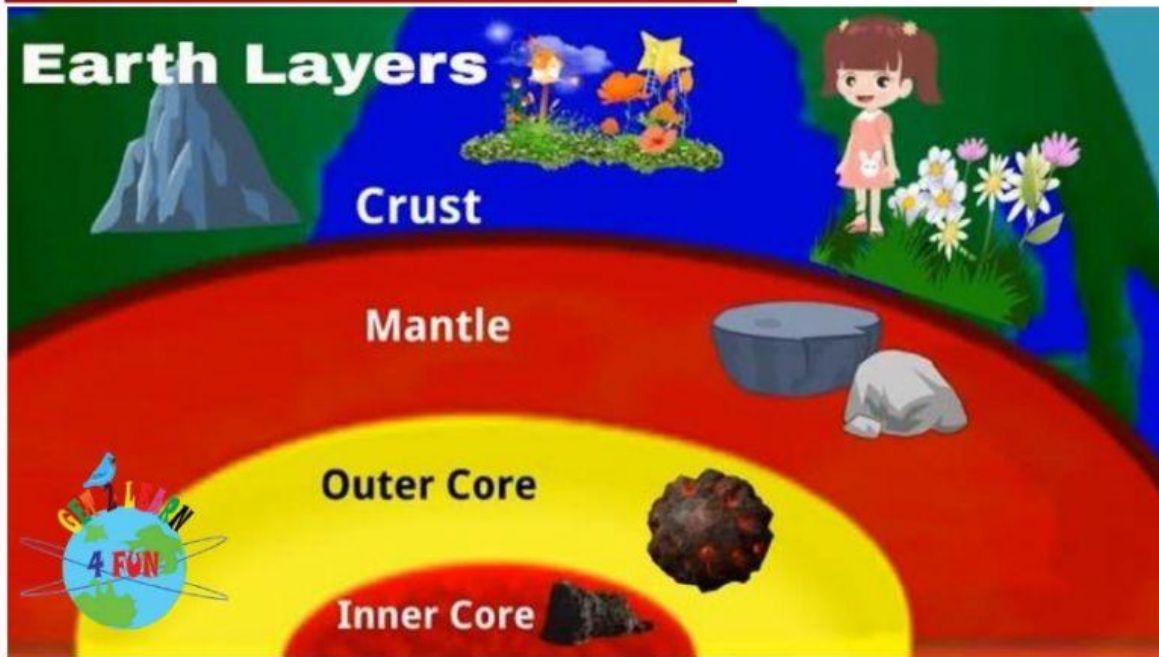
Cores

Crust- It the outer layer of the earth where we live is called crust. It is made up of all kinds of mountains, rocks, soil and water.

Mantle- The layer below the crust is Mantle. It is made of of thick rocky solid substances. The temperature of Mantle is very high it consists rock in molten form.

Core is dicided into two parts-

Outer and inner core



Outer core- The outer core is made up of hot liquid molten lava.

Outer core- It is in solid form and it is made up of iron and

nickel.