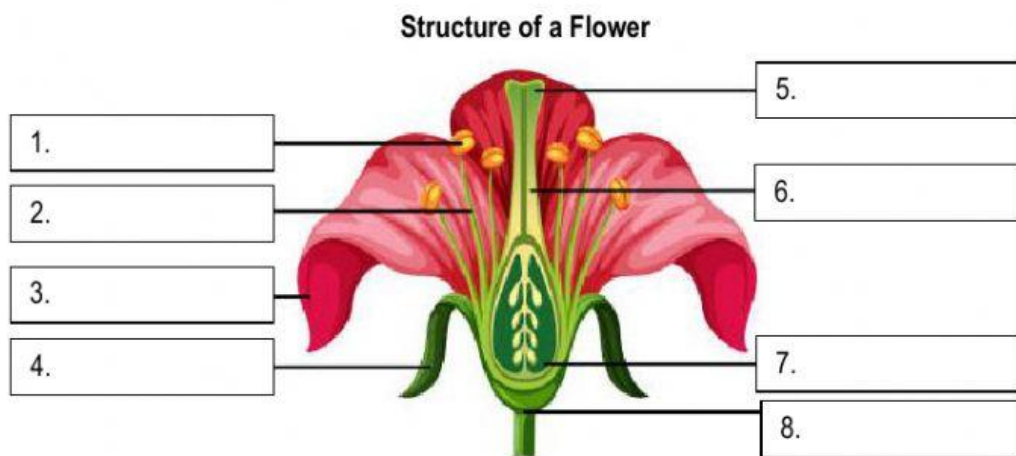


Name: _____ Student no. _____ Class: MEP1/9

Part 1: Sexual Reproductive System of Flowering Plants

Instruction: Label the structure of a flower. Select your answer below.

Petal	Stigma	Filament	Receptacle
Style	Sepal	Ovary	Anther



Instruction: Read each question carefully and select the best answer.

9. Which part of flower attracts insect for pollination?

- a. Ovary b. Petal c. Stigma d. Anther

10. Which part of flowers protects the ovules? After fertilization, it develops into a fruit.

- a. Sepal b. Ovule c. Style d. Ovary

11. It contains the female gamete. After fertilization, it develops in to a seed.

- a. Filament b. Sepal c. Ovule d. Stem

12. It produces male gamete (pollen grain).

- a. Anther b. Stamen c. Pistil d. Fruit

13. Which of the following is the agent of pollination?

I. Wind

II. Insect

III. Water

IV. Animals

a. I, II and III only

a. II and III and IV only

b. II and III only

a. I, II, III and IV

Part II. Development of Fruits and Seeds

Instruction: Read each questions carefully and select the best response.

14. A process where male gametes fuses with female gametes to form a zygote is called _____.

a. Fertilization

b. Pollination

c. Dispersal

d. Development

15. The wall of the fruit is called _____.

a. Ovum

b. Leaf

c. Seed

d. Pericarp

Instruction: Look at the pictures and identify the types of seeds and fruits dispersal. Select your answer below.

Dispersal by water

Explosive mechanism

Dispersal by wind

Dispersal by animals

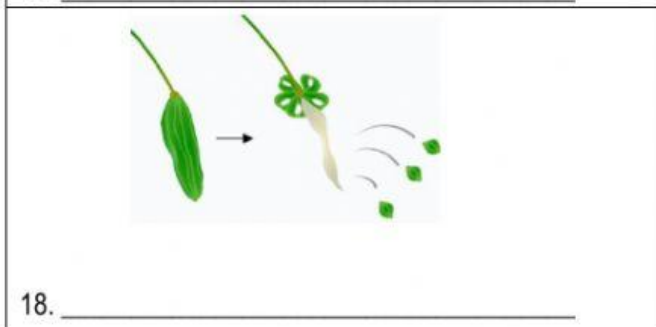
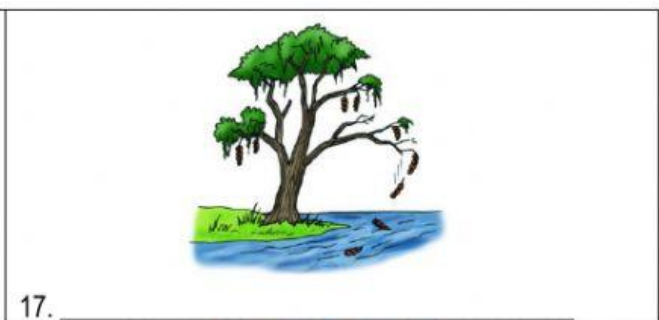
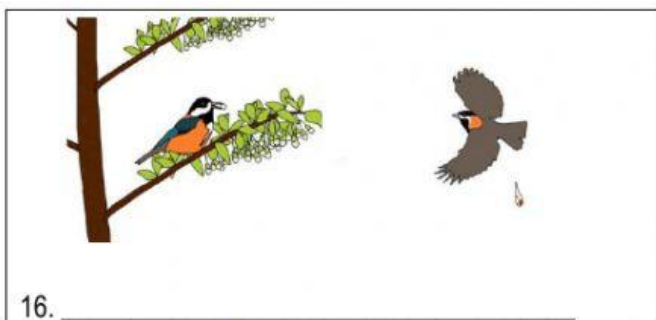
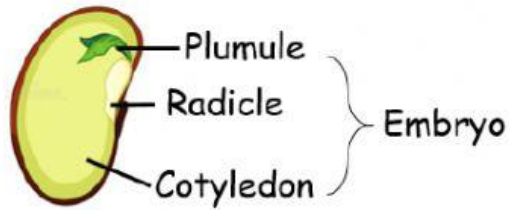


Figure 1 shows the part of seed's embryo.



20. From **Figure 1**, which part stores food for the embryo?

- a. Plumule b. Radicle c. Cotyledon d. Embryo

21. From **Figure 1**, which part develops into a young shoot?

- a. Cotyledon b. Embryo c. Radicle d. Plumule

22. Which of the following are considered as macro nutrients need by the plants?

I. Nitrogen and Phosphorus

II. Potassium and Calcium

III. Magnesium and Sulphur

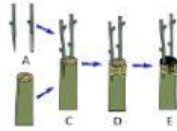
IV. Boron and zinc

- a. I, II and III only a. II and III and IV only
b. II and III only a. I, II, III and IV

23. _____ is any substance added to soil that promotes plant growth.

- a. Micronutrients b. Fertilizer c. Substances d. Macronutrients

Instruction: Drag the pictures to the way it is reproduce.



<p>24. Reproduce by layering</p>	<p>25. Reproduce by cutting</p>	<p>26. Reproduce by grafting</p>
<p>27. Reproduce by bulbs</p>	<p>28. Reproduce by runners</p>	<p>29. Reproduce by underground stem</p>
<p>30. Reproduce by leaves</p>		

Part III. State of Matter

Instruction: Read each questions carefully and select the best response.

31. It has no definite shape but has a definite volume. It takes the shape of its container.

- a. Solid b. Liquid c. Gas d. Plasma

32. It has no definite shape or volume. It fills up its container completely.

- a. Solid b. Liquid c. Gas d. Plasma

33. It has a definite shape and volume. The particles are arrange very closely in a fixed regular pattern.

- a. Solid b. Liquid c. Gas d. Plasma

34. Liquid change into gas.

- a. Boiling b. Freezing c. Melting d. Condensation

35. Gas change into liquid.

- a. Boiling b. Freezing c. Melting d. Condensation

36. Solid change into liquid.

- a. Boiling b. Freezing c. Melting d. Condensation

37. Liquid change into solid.

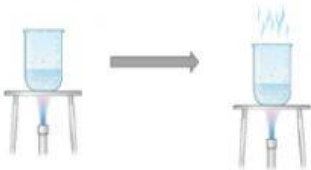
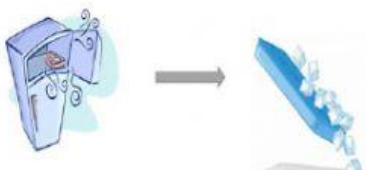
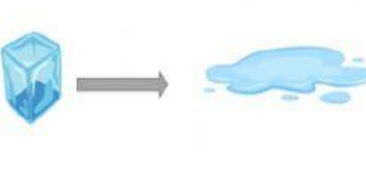
- a. Boiling b. Freezing c. Melting d. Condensation

Instruction: Look at the picture and select the best answer below.

Solid → Liquid

Liquid → Solid

Liquid → Gas

 <p>38. _____</p>	 <p>39. _____</p>	 <p>40. _____</p>
--	--	--