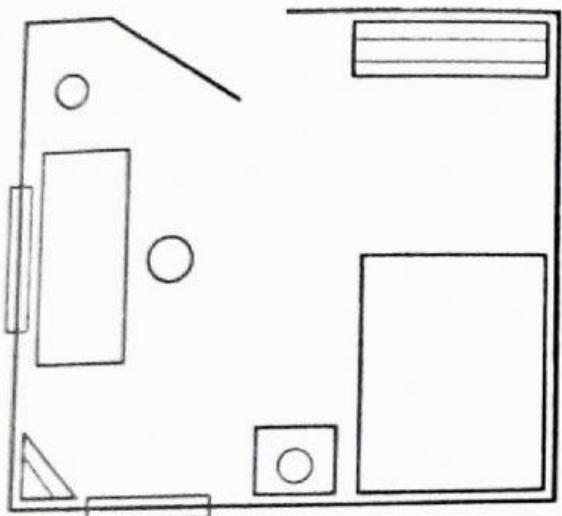


The Title

A *title* is a name. People have titles, and so do pets. Maps also have titles. A map's title tells us what the map is about.

Under each map, write the correct title.

- | | |
|---------------|---------------|
| Rivertown | South America |
| Market Street | My Bedroom |



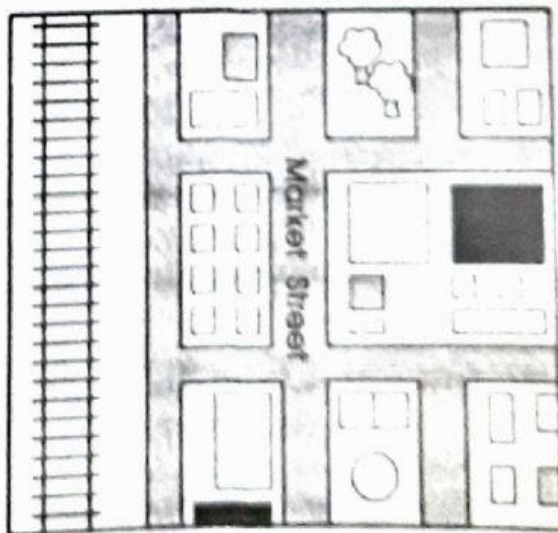
1. _____



2. _____



3. _____

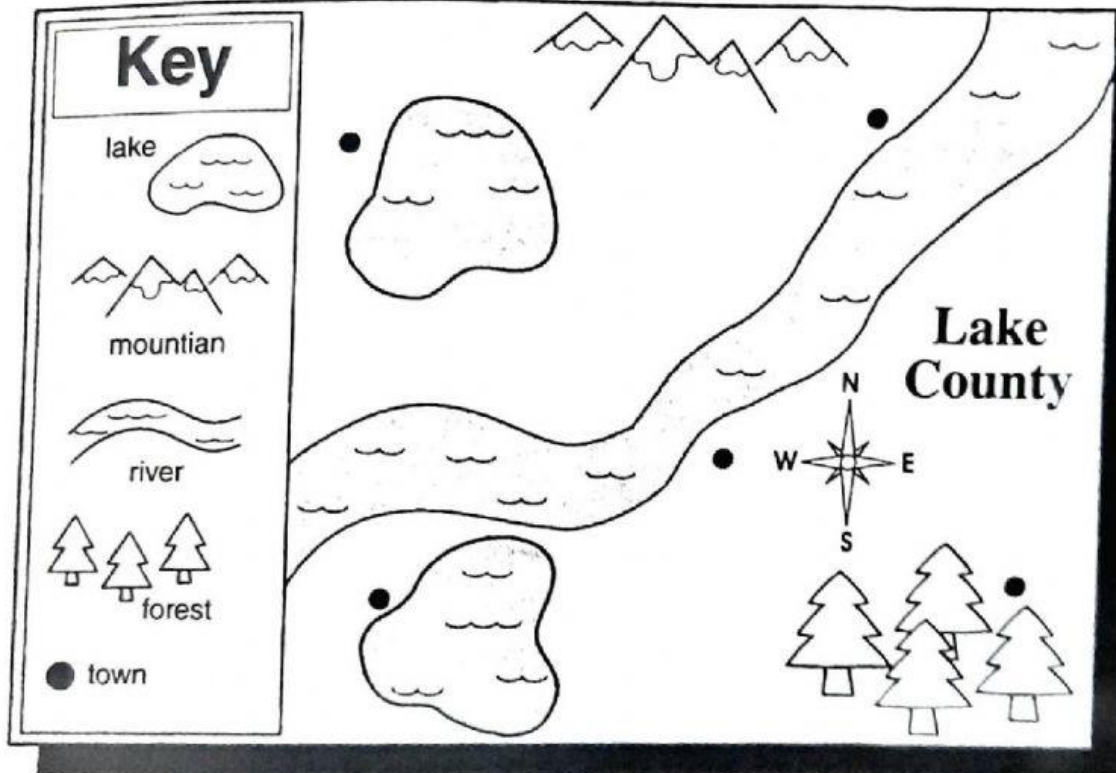


4. _____

A Key

Map makers draw the symbols they use in a map **key**. The map key tells what each symbol stands for.

Look at this map and the map key. Use it to answer the questions below.



1. There are _____ lakes in Lake County.
2. There are _____ towns in Lake County.
3. One of the towns in Lake County is not by water. It is by the
f _____.
4. Between a lake and the river, there are **m** _____ at the
north end of Lake County.
5. A **r** _____ runs through the middle of the county between two lakes.