



ANIMAL CELL



Animals are living things. They are made up of cells.



frog



spider



mouse



pigeon



beetle



lobster



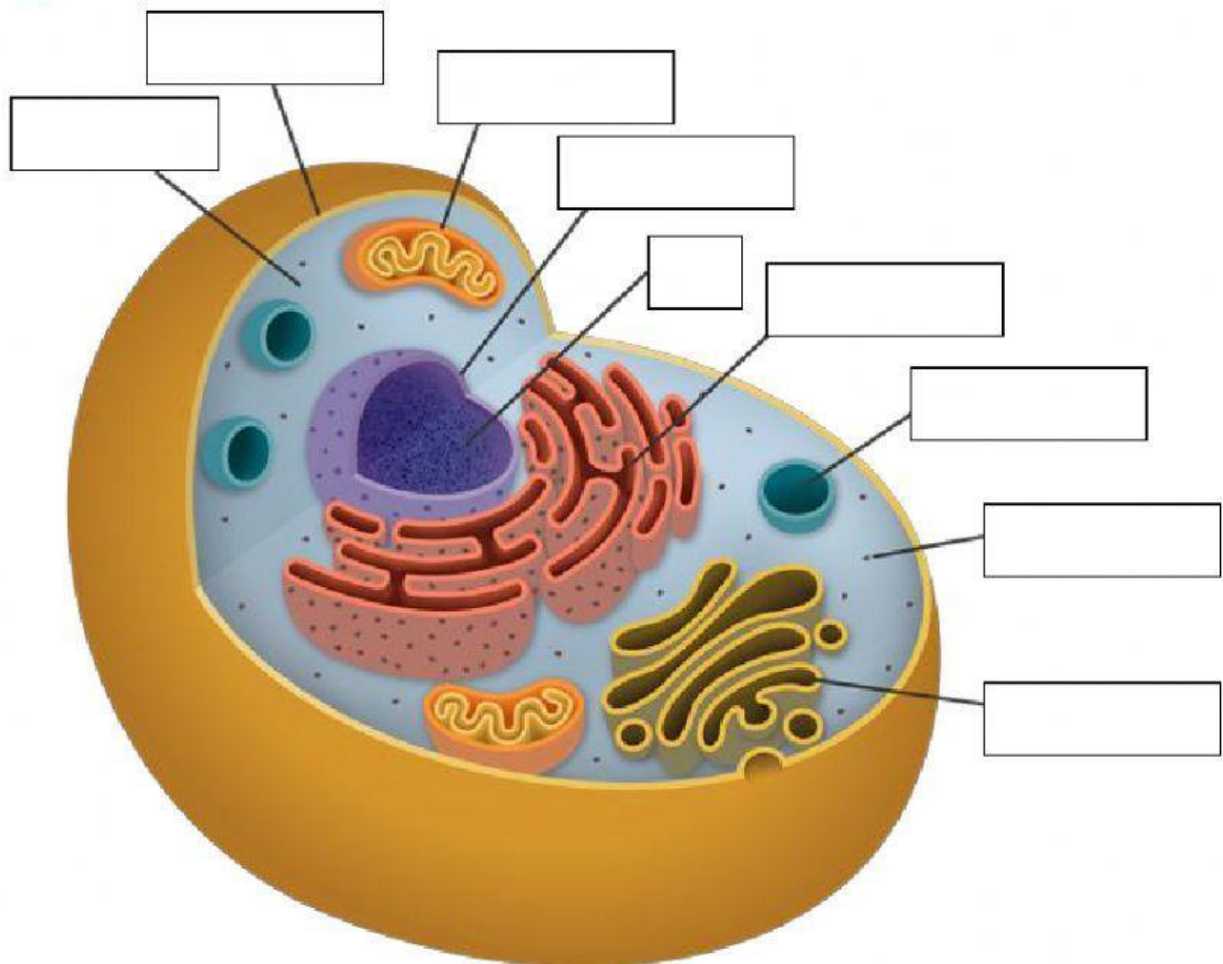
human being

Cells are the basic blocks of all living things.

Animal cells have similarities and differences with plant cells.



1-Label the main parts and organelles in an animal cell:



mitochondrion

cell membrane

cytoplasm

nucleus

DNA

ribosome

Golgi
apparatus

endoplasmatic
reticulum

lysosome