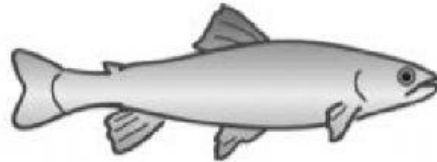
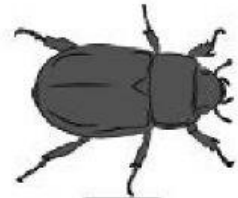
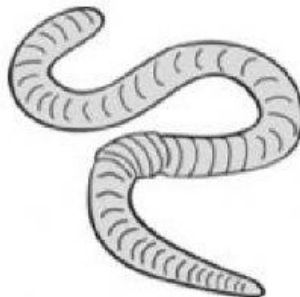


> 1.4 Different kinds of skeletons

Focus

1 Put (Y) in the box below the picture of each animal that has skeleton inside its body and (X) if hasn't.

☐☐☐☐☐☐

2 a Write the word for animals that have a backbone.

b Write the word for animals that do not have a backbone.

c Write the word for a type of skeleton found on the outside of an animal's body.

d Which animals in the pictures have the type of skeleton you named in the previous question? Put a cross (X) in the box under the picture of these animals.