

NAME : \_\_\_\_\_

CLASS : \_\_\_\_\_

## SCIENCE PI 2011

Answer all questions. Choose the correct answer and write the letter (A, B, C or D) in the answer box.

1. Sound energy is caused by \_\_\_\_\_.

- A. Condensation.
- B. Insulation.
- C. Radiation.
- D. Vibration.

☐

2. The female part of a flower is the \_\_\_\_\_.

- A. Anther.
- B. Petal.
- C. Pistil.
- D. Sepal.

☐

3. Which of the following is caused by condensation?

- A. Haze.
- B. Steam.
- C. Rainwater.
- D. Water vapour.

☐

4. What must Rahim do in order to avoid himself from getting an electric shock?

- A. Avoid getting his finger into an open electric socket.
- B. Handle electrical appliances with wet hands.
- C. Overload his home circuit by putting too many appliances in one socket.
- D. Touch a bare wire that is carrying an electric current.

☐

5. Grow foods help our body to grow and develop into a strong, healthy adult.  
Examples of Grow foods are \_\_\_\_\_.

- A. bread, cereals and rice.
- B. candy, chocolate and sweets.
- C. carrots, sweet potatoes and vegetables.
- D. Cheese, meat and milk.



6. Siti sets up an electric circuit as shown in Figure 1. She found the bulb did not light up. How can she make the bulb light up?

- A. Add more dry cells.
- B. Replace the glass rod with an iron nail.
- C. Use longer wires and more dry cells.
- D. Use two light bulbs and longer wires.

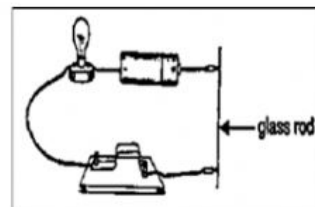
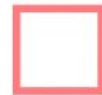
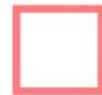


Figure 1



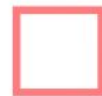
7. A material is flexible if it \_\_\_\_\_.

- A. can be bent easily.
- B. can support heavy loads.
- C. cannot be stretched easily.
- D. cannot be scratched easily.



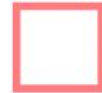
8. Which type of teeth do you use to cut food?

- A. Canines.
- B. Incisors.
- C. Molars.
- D. Premolars.



9. How does a polar bear adapt itself to survive in the cold?

- A. The polar bear eats the penguins.
- B. The polar bear has a big body.
- C. The polar bear has a layer of fats under its skin.
- D. The polar bear plays with the snow.



10. Figure 2 shows the life cycle of a mung bean plant.

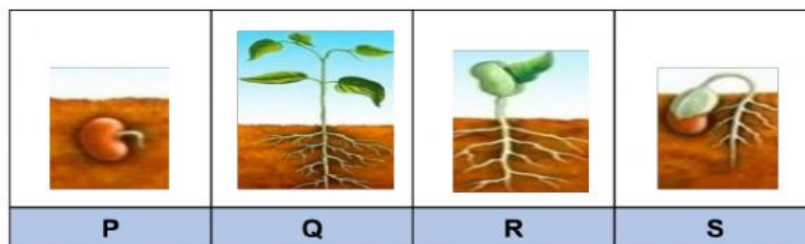


Figure 2

Which of the arrangements below show the proper sequence of the mung bean plant life cycle?

- A. P, Q, R, S
- B. P, S, R, Q
- C. R, P, S, Q
- D. R, S, Q, P



11. The diagram in Figure 3 shows dough being pushed.

- A. The dough becomes big.
- B. The dough becomes hard.
- C. The dough changes colour.
- D. The dough changes shape.



Figure 3



12. Which of the following is **NOT** true why Fatimah must not share her handkerchief?

- A. It can cause the spread of red eyes.
- B. It can cause the spread of common cold.
- C. It can cause food poisoning.
- D. It can cause the spread of skin disease.



13. Study the diagram in Figure 4. What should Salim do to make the sugar dissolve faster?

- A. Add ice cubes in the water.
- B. Change to a smaller beaker.
- C. Heat the water.
- D. Reduce the amount of water in the beaker.

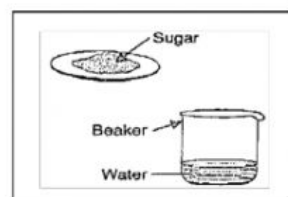


Figure 4



14. Which part of the body system does the diagram in Figure 5 show?

- A. Breathing system.
- B. Digestive system.
- C. Nervous system.
- D. Transport system.

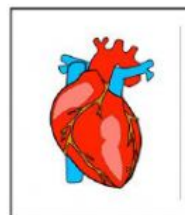


Figure 5



15. Study the diagram in Figure 6 carefully. A spoon is used to open the lid of the tin. Which category of a simple machine is the spoon?

- A. A lever.
- B. A pulley.
- C. A wheel and axle.
- D. An inclined plane.

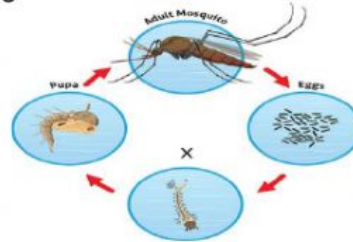


Figure 6



16. Study the life cycle of a mosquito in Figure 7. What does **X** refer to?

- A. Fry.
- B. Larva.
- C. Nymph.
- D. Tadpole.



**Figure 7**



17. To avoid passive smoking, what should Ali do when there are people smoking near him?

- A. He should ask for a cigarette from them.
- B. He should get away from them.
- C. He should smoke together with them.
- D. He should stay closer with them.



18. In Table 1, which of the following plants have been classified correctly?

	Flowering	Non-flowering
A.	Hibiscus, Orchid and Rose	Fern, Liverwort and Moss
B.	Mango tree, Rose and Orchid	Rafflesia, Yellow flame and Pine tree
C.	Sunflower, Orchid and Frangipani	Hibiscus, Moss and Bougainvillea
D.	Liverwort, Fern and Moss	Orchid, Hibiscus and Bougainvillea



19. Figure 8 shows a skydiver jumping from an aeroplane. What is the force that pulls him towards the surface of the Earth?

- A. Elastic.
- B. Friction.
- C. Gravity.
- D. Magnetic force.



**Figure 8**





20. Muhd Hafiz wants to measure the temperature of the following beakers in Figure 9. Which beaker shows the highest temperature?

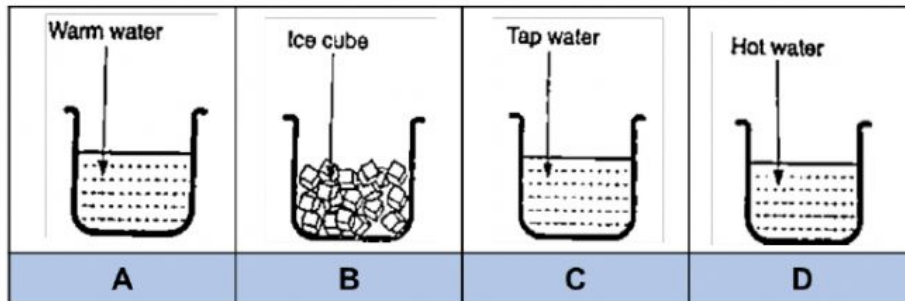


Figure 9

21. Which one of the following graphs in Figure 10 shows the change in a person's heartbeat when running?

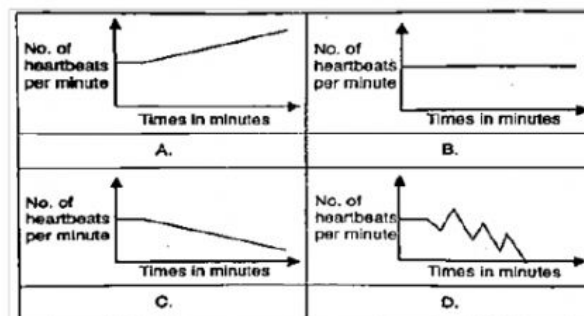


Figure 10

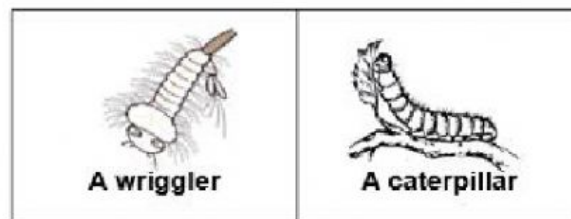
22. Figure 11 shows Ahmad going to the toilet. Which statement should Ahmad **NOT** do to prevent the spread of infectious diseases after using the toilet?

- A. Flush the toilet after using it.
- B. Wash his hands before and after going to the toilet.
- C. Wash his hands without flushing the toilet.
- D. Wipe or dry his hands, after washing his hands.



Figure 11

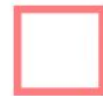
23. Figure 12 shows diagrams of a wriggler and a caterpillar.



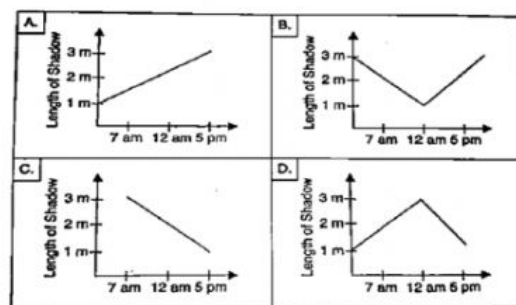
**Figure 12**

In what way are they similar?

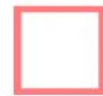
- A. They can fly.
- B. They have fangs and feed on blood.
- C. They live in water.
- D. They look like their parents when they get older.



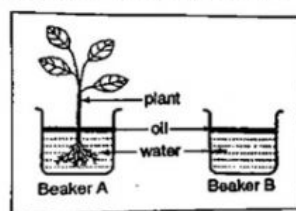
24. Which of the following graphs in Figure 13 correctly shows the changes in the length of a shadow cast by an object during the day?



**Figure 13**



25. Figure 14 shows experiments to find out if plants take in water through their roots. What happened to the water levels in both jars after one week?



**Figure 14**

- A. The water level in Beaker A decreased.
- B. The water level in Beaker B decreased.
- C. The water levels in both Beaker A and Beaker B decreased.
- D. The water levels in both Beaker A and Beaker B remained the same.



26. The diagram in Figure 15 shows a simple machine. Which of the following letters represents the axle?

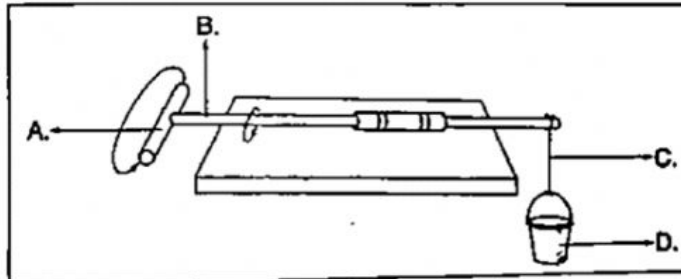


Figure 15

27. Figure 16 below shows a polluted river caused by human activities.

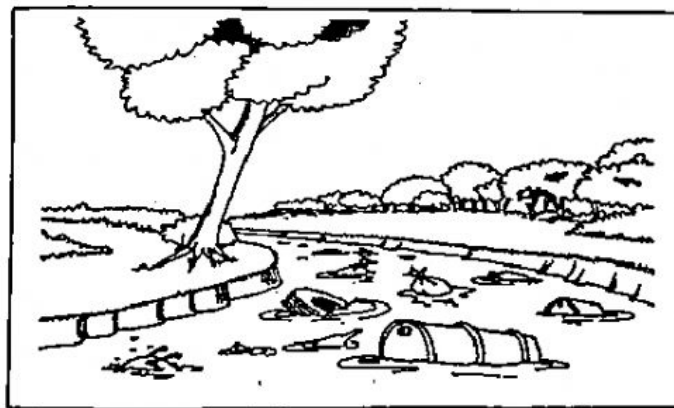


Figure 16

Which of the following is correct in order to reduce water pollution in Figure 16 above?

- A. Do not dump garbage into the river.
- B. Ignore oil spills from ships, boats and oil rigs.
- C. Release waste water such as sewerage into the river.
- D. Reduce the amount of water you drink.



28. Study the diagram in Figure 17 below. What is the curved path called?

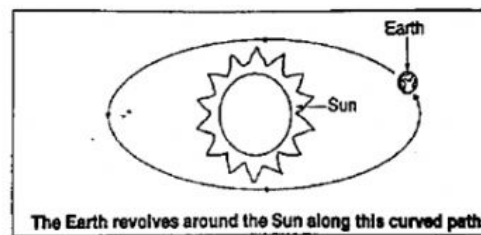
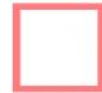


Figure 17

- A. Orbit.
- B. Phases.
- C. Revolution.
- D. Rotation.



29. In Figure 18, a wooden ruler has been stroked a hundred times with a magnet. Which of the following statements is true?

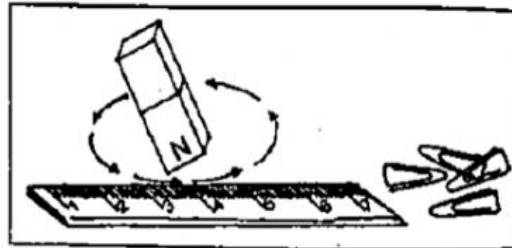


Figure 18

- A. The ruler can attract paper clips.
- B. The ruler has become a strong magnet.
- C. The ruler has become a weak magnet.
- D. The ruler will not attract the paper clips.



30. What should you do to conserve water at school?

- A. Ignore broken pipes and dripping water septic tanks.
- B. Leave the tap on after using it.
- C. Turn off the taps properly after using them.
- D. Use a lot of water to water the plants.



**END OF PAPER**