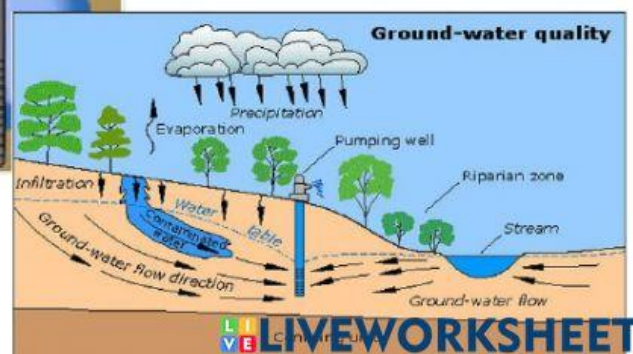
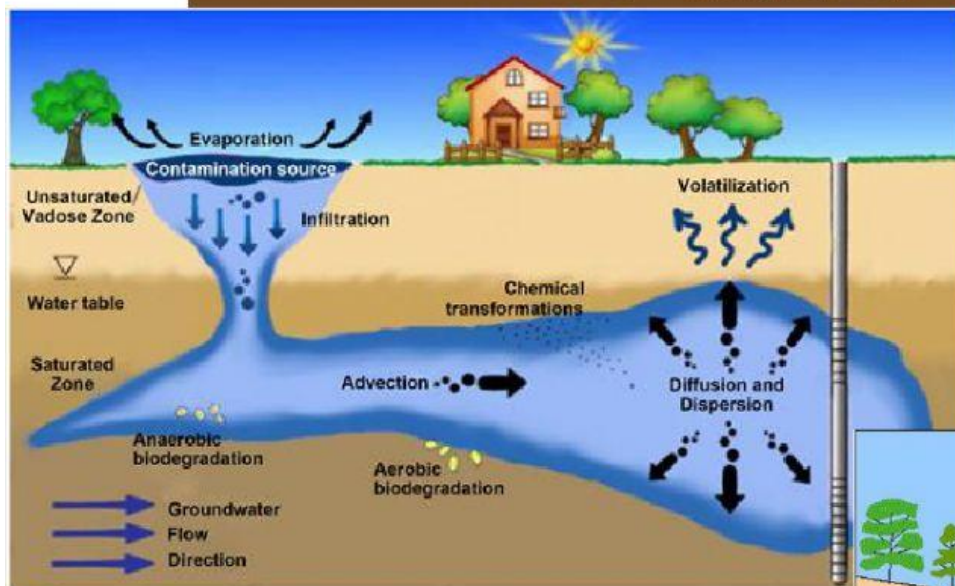
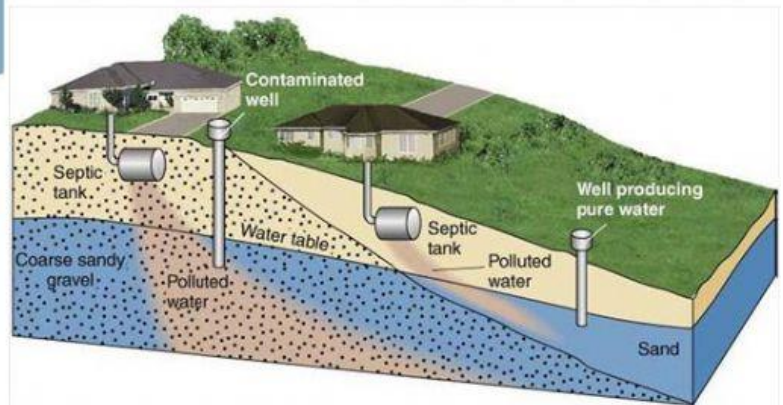
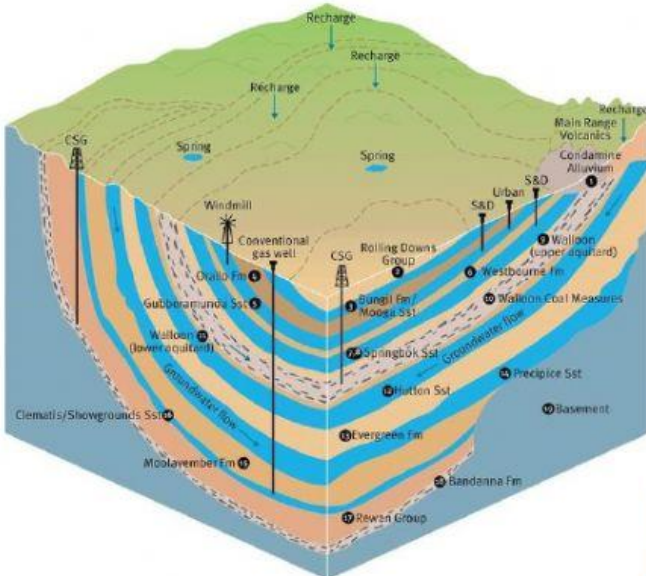
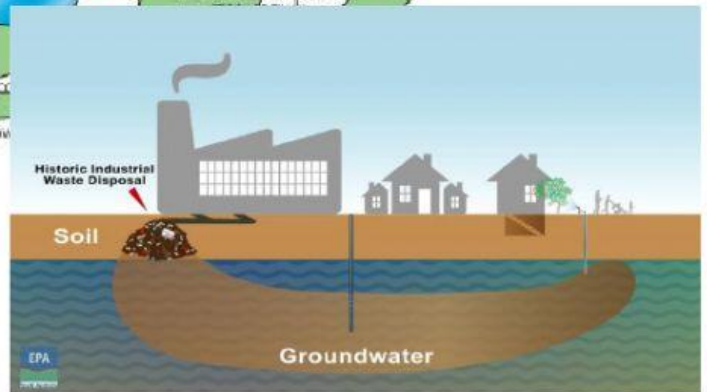
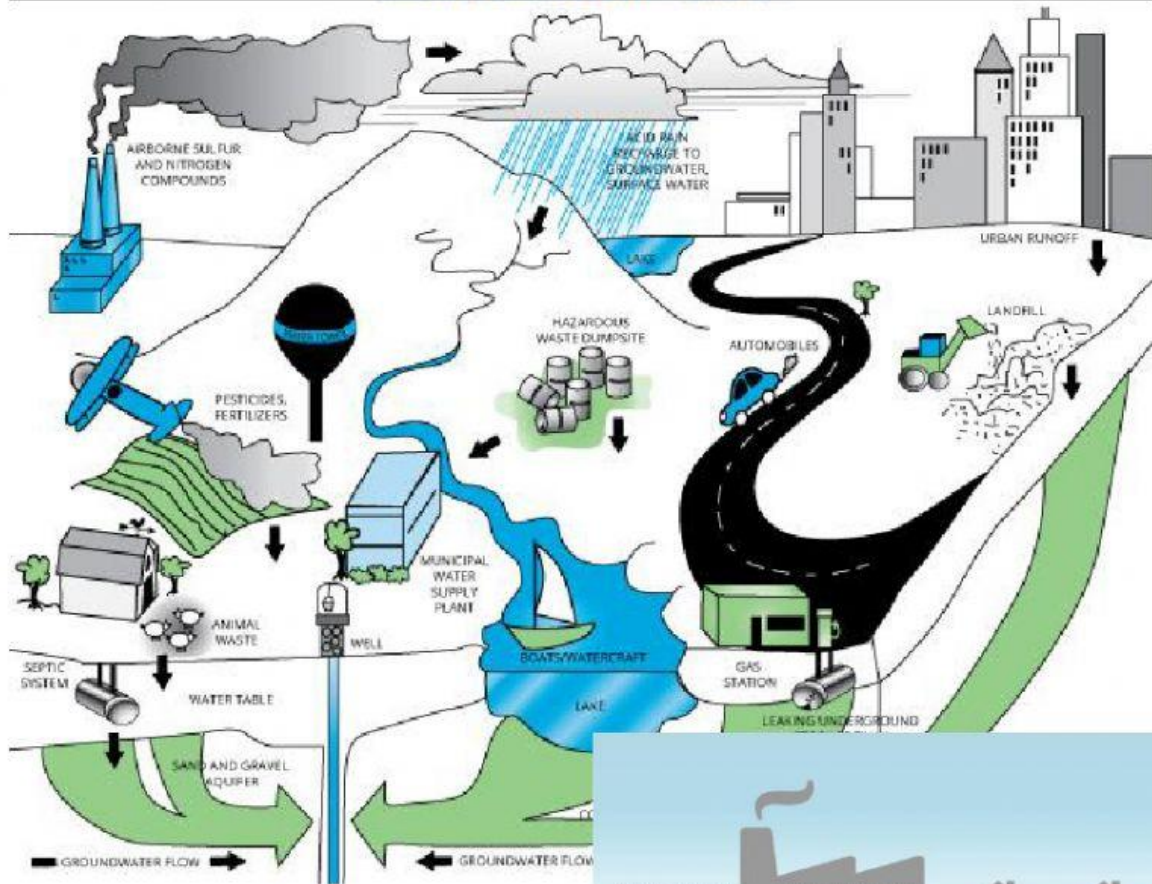


8.19 Cleaning Up Groundwater



SOURCES OF GROUNDWATER CONTAMINATION



1. What was the Hanford site used for?
2. What river needs to be protected? What is it used for?
3. By what routes did contamination get into the groundwater?
4. In the video, contamination decreased from 80 to 65 square miles. What was the main reason for that?
5. What is the goal at Hanford?
6. What is being done to clean the contaminated groundwater?

7. How are barriers used to clean groundwater?