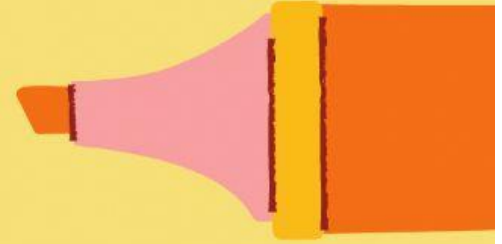


UNIT 6: AN EXCURSION



1. Where are the speakers having this discussion?

- A. a library
- B. a student flat
- C. a lecture theatre

2. How has Chloe spent the morning?

- A. Drinking coffee
- B. Training
- C. Studying

3. According to Bill, what does the experiment show?

- A. Quantities of water are hard to measure.
- B. Children under five make many mistakes.
- C. Clear thinking is difficult for small children.

4. Bill's assignment is about the stages in a child's

- A. emotional development
- B. mental development
- C. social development