

Name: \_\_\_\_\_

### 3rd Year. Test 2.

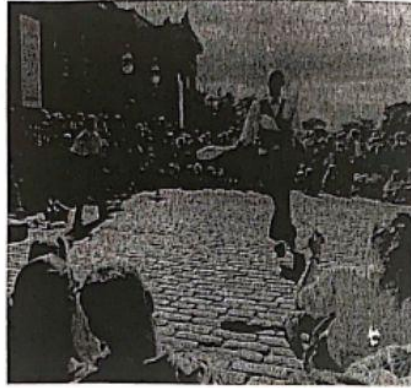
#### SKILLS TEST

#### READING COMPREHENSION

Read the article about the Edinburgh Festival.  
Are sentences 1-7 'Right' (A) or 'Wrong' (B)?  
If there is not enough information to answer 'Right' (A) or 'Wrong' (B),  
choose 'Doesn't say' (C).  
For questions 1-7, mark A, B or C.

## Visit the Edinburgh Festival!

Every year, thousands of people come to Edinburgh, the capital city of Scotland, to be part of the Edinburgh Festival. For three weeks every August and September the city is filled with actors and artists from all over the world. They come to Edinburgh for the biggest arts festival in Britain. During this time the streets of the city are alive with music and dance from early morning until late at night. You can even see artists painting pictures on the streets. One of the best parts of the Festival is the 'Fringe', where students do comedy shows in small halls and cafés.



Tens of thousands of tourists come to the Festival to see new films and plays and hear music played by famous musicians. This year, you can see over five hundred performances with actors from more than forty countries.

The tickets for these performances are quite cheap and it is usually easier to see your favourite star in Edinburgh than it is in London. So come to Edinburgh next summer, but remember it can be difficult to find a room, so why not book your hotel now!

| EXAMPLE  | ANSWER |
|--|--------|
| 0 Edinburgh is the capital of Scotland.  | A      |
| A Right B Wrong C Doesn't say  |        |
| 1 The Edinburgh Festival is a month long.  | A      |
| A Right B Wrong C Doesn't say  |        |
| 2 The Edinburgh Festival is in October.  | A      |
| A Right B Wrong C Doesn't say  |        |
| 3 Actors come to the Edinburgh Festival from lots of different countries         | A      |
| A Right B Wrong C Doesn't say  |        |
| 4 You can hear music all day.  | A      |
| A Right B Wrong C Doesn't say  |        |
| 5 More than ten thousand students come to the Edinburgh Festival every year.     | A      |
| A Right B Wrong C Doesn't say  |        |
| 6 It is expensive to go to the theatre in Edinburgh.                             | A      |
| A Right B Wrong C Doesn't say  |        |
| 7 It is usually more difficult to see famous actors in London than in Edinburgh. | A      |
| A Right B Wrong C Doesn't say  |        |

Complete the telephone conversation.

What does Tom say to Maria?

For questions 6-10, mark the correct letter A-H.

| EXAMPLE  | ANSWER  |
|--|---|
| Maria: Hello, Tom. This is Maria.                                    |   |
| Tom: 0 _____   | E   |
| Maria: Fine. Thank you for the party last night. I had a great time. | A Well, two people left their coats behind. What colour is yours? |
| Tom: 6 _____   | B You'll have to come before 7.15. I'm going out then.            |
| Maria: Tom, did I leave my coat at your house last night?            | C Yes, there's a green one here.                                  |
| Tom: 7 _____   | D What time is it?  |
| Maria: It's green with a black collar.                               | E Hi Maria, how are you?  |
| Tom: 8 _____   | F All right, see you later.                                       |
| Maria: I'm going to work now. Can I come and get it this evening?    | G It's a beautiful coat, isn't it?                                |
| Tom: 9 _____   | H Good. I'm glad you enjoyed it.                                  |
| Maria: I'll come at 6.30.  |   |
| Tom: 10 _____  |   |
| Maria: OK. Goodbye.  |   |