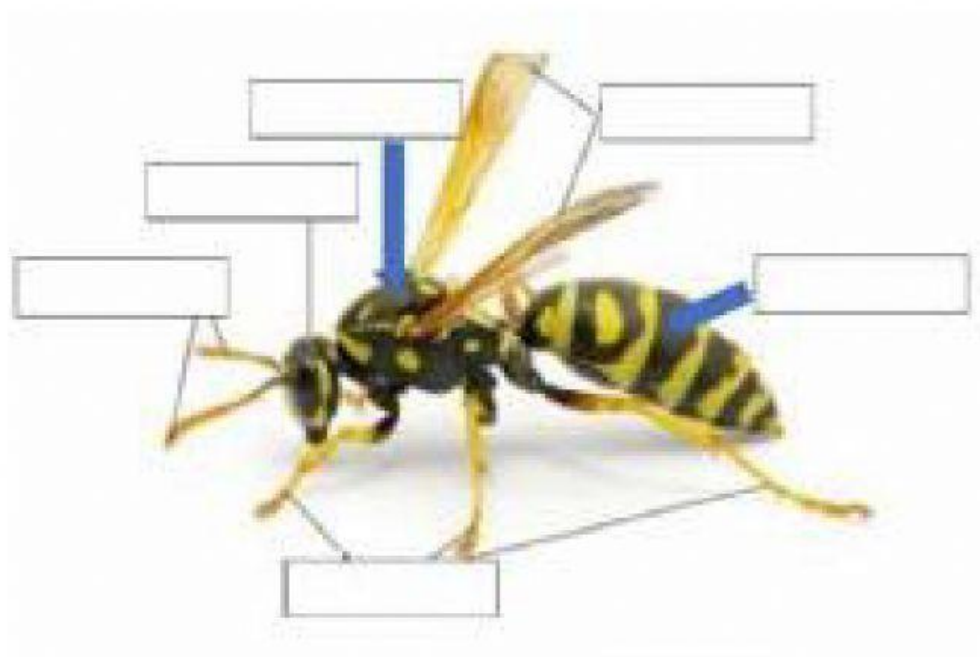


## NATIONAL MODEL MATRICULATION HIGHER SECONDARY SCHOOL

### I.ANSWER IN ONE WORD

1. THE ANTS BUILD \_\_\_\_\_.
2. THE CATERPILLAR MAKES A \_\_\_\_\_.
3. THE BODY OF AN INSECT IS DIVIDED INTO \_\_\_\_\_ PARTS.
4. INSECTS THAT LIVE IN LARGE GROUPS ARE CALLED \_\_\_\_\_.
5. THE MALE HONEY BEES ARE CALLED \_\_\_\_\_.

### II.LABEL THE PARTS:



### III. WHO AM I

1. I CAUSE MALARIA. \_\_\_\_\_
2. I AM SEEN IN THE KITCHEN. \_\_\_\_\_
3. I CHEW WOOD MATERIALS \_\_\_\_\_
4. I AM FOUND IN HUMAN HAIR \_\_\_\_\_
5. I BITE AND CAUSE FLAT BUMPS \_\_\_\_\_