

Name: _____

Date: _____

Year: _____

EXERCISE 15.1: REPRODUCTION IN HUMANS

1. Name the organ that produces:

(a) male sex cells: _____

(b) female sex cells: _____

2. The Figure 1 below shows a sperm cell.



Figure 1

(i) Identify P and Q.

(a) P: _____

(b) Q: _____

(ii) What is the function of Q?

3. Figure 2 shows a type of cell made by the male reproductive organ. What organ produces the cell shown above?



Figure 2

A. Penis
B. Sperm duct

C. Testes
D. Urethra



4. Figure 3 shows the male reproductive organs.

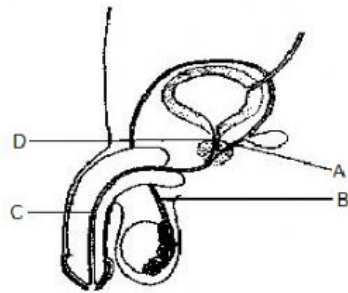


Figure 3

Which structure A, B, C or D allows both urine and sperm to pass through?

5. Figure 4 shows parts of the male sexual organ labelled **P**, **Q**, **R** and **S**. Which structures are the testis, sperm duct and penis?

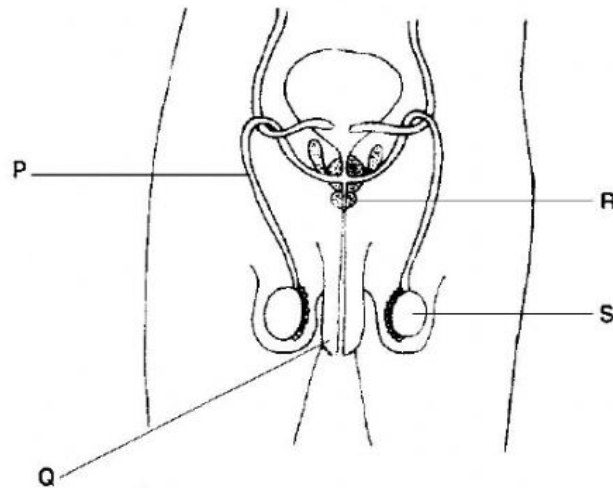


Figure 4

	Sperm duct	Penis	Testis
A	P	Q	R
B	P	Q	S
C	S	P	R
D	S	P	Q

6. Figure 5 shows the male reproductive organs.

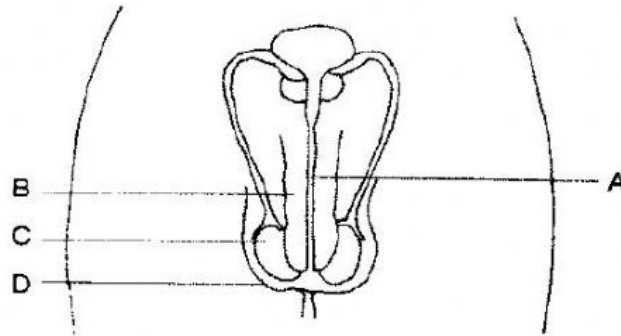


Figure 5

Which structure A, B, C and D allows both urine and sperm to pass through?

7. Figure 6 shows a human egg cell and sperm cell.



Figure 6

What are the features of a human egg, when compared to the sperm cell?

	size of egg cell	number of egg cell produced
A	larger than sperm cell	more than that of sperm cell
B	larger than sperm cell	less than that of sperm cell
C	smaller than sperm cell	more than that of sperm cell
D	smaller than sperm cell	less than that of sperm cell

8. Which of the following makes up the male reproductive system?

- A. Oviduct, ovary, uterus, urethra
- B. Ovary, penis, sperm duct, urethra
- C. Penis, sperm duct, testis, urethra
- D. Penis, sperm duct, testis, uterus