

NS 123 TEST. PART 1/2.

BASED ON RICHMOND-SANTILLANA'S BOOK FOR 5TH GRADE, MADRID, 2019/20.

WARNING! This is an auto-check test. Follow these instructions:

- Activate BLOQ MAYUSC all the time to write in UPPER CASE LETTER!
- Don't use abbreviations, commas, dots, or 'and'.
- Follow the instructions about:
 - Alphabetical order in multiple elements. You can write them as you remember and then re-ordering using ctrl+X and ctrl+V.
 - Singular or plural forms are important.
- At the end of the test you can write comments or suggestions.

LET'S START! Your teacher needs these information to contact you.

0.- Code name (ej. 5B00SERGIOGG):

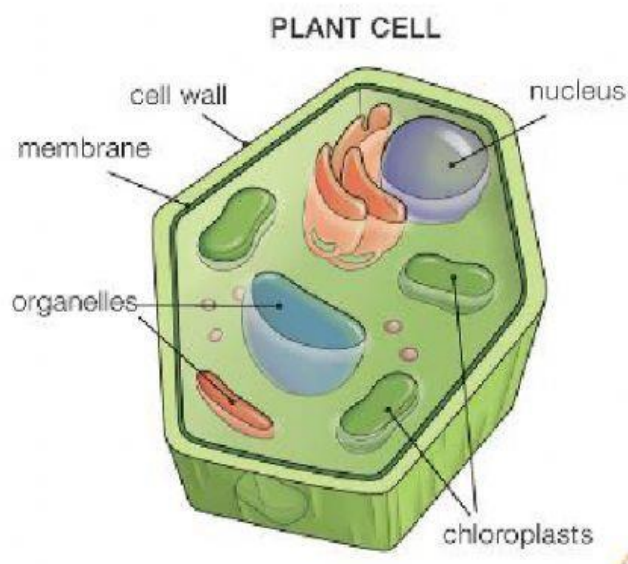
0.- E-mail (upper cases too!):

1.- What are cells? Cells are the .

2.- Name the basic life processes (in alphabetical order):

NUTRITION , REPRODUCTION, SENSITIVITY .

3.- Label the parts of this cell. Write in the title if it belongs to an animal or a plant.



4.- Which 2 parts don't exist in an animal cell? (in alphabetical order):

CELL WALL , CHLOROPLASTS.

5.- Levels of organization of living things (from the most simple to the most complex) (in singular):

CELL , TISSUE , ORGAN , SYSTEM , ORGANISM .

6.- What cellular level of organization are these things? (in singular):

a) A dog or a cat: ORGANISM.

b) A neuron: CELL.

c) The group of all the parts we need to eat: SYSTEM.

d) Epidermis: TISSUE.

e) A bone or a leaf or a flower: ORGAN.

7.- Complete the table chart and use YES/NO/SOME according to the characteristics.

KINGDOMS of living things:	ANIMAL	PLANT	PROTISTA	MONERA	FUNGI
Unicellular	NO	NO	SOME	YES	SOME
Make their own food	NO	YES	SOME	SOME	NO

8.- Complete the table chart:

VERTEBRATES:	FISH	AMPHIBIANS	REPTILES	BIRDS	MAMMALS
Body covering	SCALES	WET SKIN (BARE SKIN)	MODIFIED SCALES	FEATHERS	SKIN / FUR
How they are born	OVIPAROUS	OVIPAROUS	OVIPAROUS	OVIPAROUS	VIVIPAROUS
Where do they live	WATER	1 WATER 2 LAND	LAND / WATER	LAND	WATER / LAND

9.-Complete the text and the chart:

The next chart is about _____INVERTEBRATES_____ because they do not have a backbone. They are classified into these groups (in plural):

MOLLUSCS	SPONGES	ECHINODERMS	CNIDARIANS	ARTHROPODS	WORMS
soft bodies	filter sea water through tiny holes to obtain food	MANY have spines	soft bodies	segmented body	long, soft bodies
MANY have a hard external shell		internal skeleton made up of plates	poisonous tentacles	external skeleton	
MOST aquatic	are aquatic	marine animals	SOME can move about		Some aquatic
	attached to surfaces beneath the sea		OTHERS attached to surfaces beneath the sea	jointed legs	no legs

10.- Mind-map of the plant kingdom:

The Plant Kingdom is divided into: (alphabetical order)

01. NON-FLOWERING PLANTS (They reproduce by SPORES)

a. FERNS (Fronds and sori)

b. MOSSES (Capsule and filament)

02. SEED-PRODUCING (OR FLOWERING) PLANTS (Embryo , seed coat, food store)

a. ANGIOSPERMS (Deciduous or evergreen)

b. GYMNOSPERMS (Cones)

ALMOST FINISHED!

11.- How much did you study? (from 0 to 10):

12.- Grade yourself from 0 to 10 before checking ☺ :

13.- Write any comments or suggestions you want to:



Este obra está bajo una licencia de Creative Commons Reconocimiento-NoComercial-CompartirIgual 4.0 Internacional. Created by teachersergio1920@gmail.com, April 2020.