



**The Shri Ram School - Aravali**  
**Subject (Worksheet): Biology**  
**Topic: Pollination and Fertilization**  
**Class: IX (2021-22)**

**Name..... Sec..... Date.....**

**1. Choose the correct option:**

**(5)**

- a. Transfer of pollen grains from a flower to the stigma of another flower on the same plant is:
  - i. Allogamy
  - ii. Geitonogamy
  - iii. Autogamy
  - iv. None of the above
- b. Insect pollinated flowers are:
  - i. Small
  - ii. Not brightly colored
  - iii. Large and showy
  - iv. Sticky
- c. The condition in which the androecium and the gynoecium mature at different times.
  - i. Homogamy
  - ii. Heterogamy
  - iii. Dichogamy
  - iv. Protogyny
- d. Flowers that are closed and can favour self- pollination only are:
  - i. chasmogamous flower
  - ii. cleistogamous flower
  - iii. perfect flower
  - iv. sterile flower
- e. Choose the correct option:
  - i. Herkogamy is when the pollen of a flower cannot reach the stigma of the same flower due to some mechanical barrier.
  - ii. Self-sterility in flowers promotes self-pollination.
  - iii. Protandry is when the stigma of a flower matures earlier than the anthers.
  - iv. None of the above

**2. Choose the technical term:**

**(2.5)**

Anemophilous

Seeds

Integument

Exine

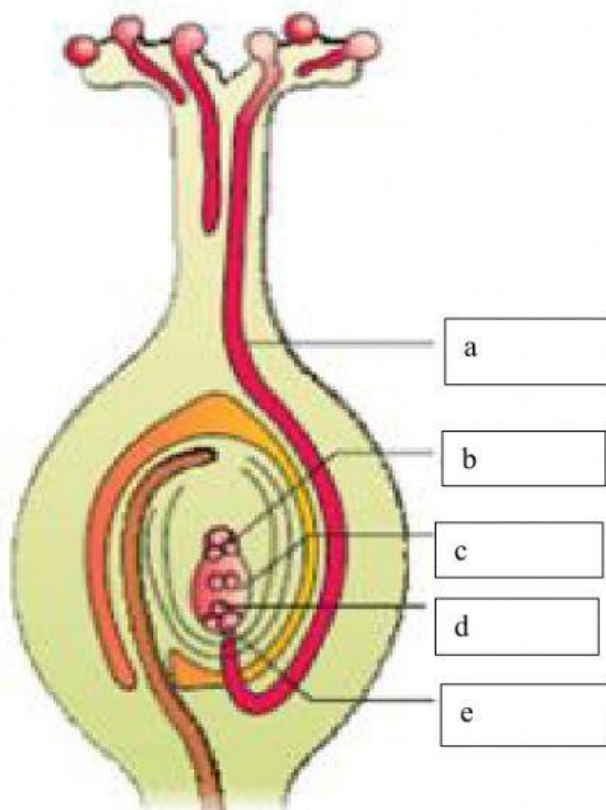
Entomophilous

Fruit

- a. Flower pollinated by insects.
- b. Outer wall of pollen grain.
- c. Flower pollinated by wind.
- d. After fertilization, ovule forms the .
- e. Protective covering around ovule.

**3. Match the parts with the correct label:**

**(2.5)**



Antipodal

Synergid

Pollen tube

Polar Nuclei

Egg Cell