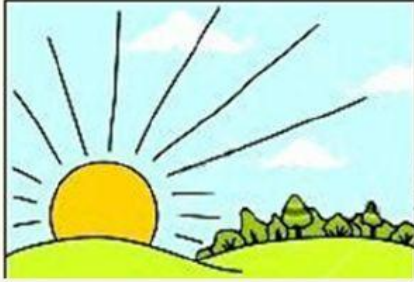


THE TIMES OF THE DAY

A1- Assignment 3.1

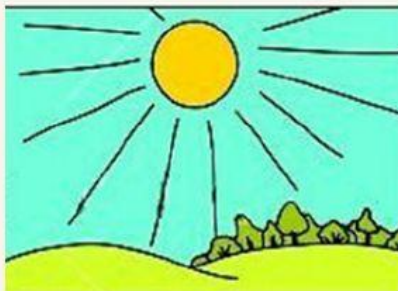
The Morning



I like to wake up at 7 -----
-----.

On Sundays, I go to church
at 9 -----.

The -----



The ----- is the best part of
the day.

After I eat lunch I can play with
my friends and do sports.

On Mondays, I ----- soccer
at ----- 4 (4:30)
and at 6 I eat and do homework.

What time do you wake up in the morning?

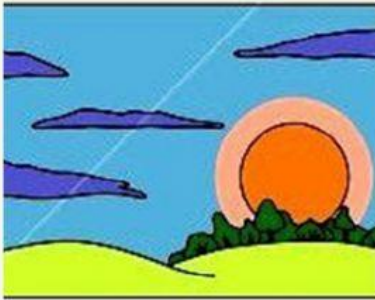
What do you like to do in the afternoon?

What do you not like doing in the morning?



THE TIMES OF THE DAY

A1- Assignment 3.1



When the sun goes down, it is time to eat dinner. My family and I eat dinner at 6 -----.

But, on Fridays we eat at 7 ----- and we eat pizza.



Time to sleep! I go to bed at 11 p.m. during the week, when I need to go to school the next day. On the weekends, I go to bed at 12 a.m., or -----.

Sometimes my family and I ----- (movies) together. My favorite ----- of movie is adventure.

What time do you eat dinner?

What time do you go to bed during the week?

What is your favorite activity to do on the weekend?

