

REVISION EXERCISE #01 - T1.1

TOPIC: 1.1 CELL STRUCTURE & FUNCTION

Answer all questions

1. Which structures are present in animal cells?

	cell membrane	cell wall	cytoplasm
A	x	✓	✓
B	✓	x	✓
C	✓	✓	x
D	✓	✓	✓

key



✓ = structure present
x = structure absent

2. The table shows the main functions of red blood cells and root hair cells.

Which row is correct?

	red blood cell	root hair cell
A	absorption	absorption
B	absorption	transport
C	transport	absorption
D	transport	transport

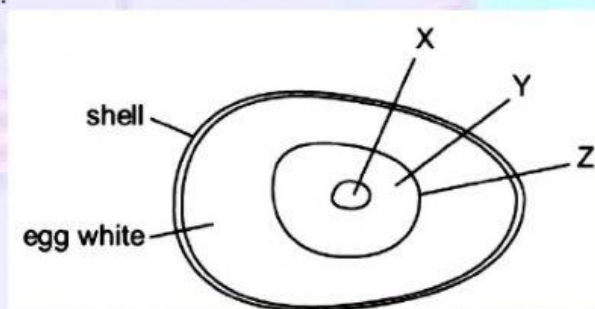


3. Which part of the structure of a root hair cell is the site of uptake of water?

- A cell membrane
- B cell wall
- C cytoplasm
- D sap vacuole



4. The yellow part of a hen's egg is a large cell containing a lot of yolk. The diagram shows an unfertilised hen's egg.



What do the labels represent?

	cell membrane	cytoplasm	nucleus
A	X	Y	Z
B	X	Z	Y
C	Z	X	Y
D	Z	Y	X



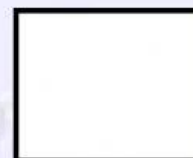
5. Which feature of a root hair cell indicates that it is from a plant and not from an animal?

- A** cell membrane
- B** cell wall
- C** chloroplast
- D** cytoplasm



6. What may be found in both animal and plant cells?

- A** cellulose cell wall
- B** chloroplast
- C** starch grain
- D** vacuole or vacuoles

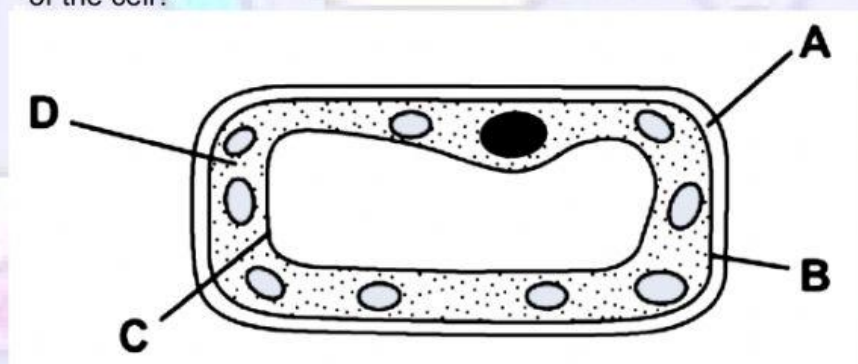


7. A cell is being examined. Which feature would enable you to identify it as a plant cell or an animal cell?

- A The cell contains a single large sap vacuole space.
- B The cell contains glucose and amino acids.
- C The cell contains stored fat.
- D The cell surface membrane is partially permeable.



8. The diagram shows a plant cell. Which structure controls the passage of substances into and out of the cell?



9. A mixed culture of living and non-living cells is placed in a red stain. Only non-living cells take up the stain. Which structure prevents the stain entering the living cells?

- A cell membrane
- B cell wall
- C cytoplasm
- D vacuole



10. The table shows some characteristics of four types of cell.

Which cell could be a root hair cell?

	nucleus	chloroplast
A	✓	✓
B	✓	x
C	x	✓
D	x	x

key

✓ = present

x = absent



11 Which structure in the plant cell contains chromosomes?

