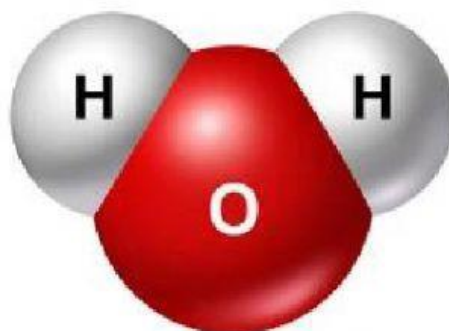


Name :

Class :

1. Diagram below shows the structure of a water molecule.  
Choose the correct answers.



- (i) The freezing point of pure water is ..... $^{\circ}\text{C}$   
(ii) The boiling point of pure water is ..... $^{\circ}\text{C}$   
(iii) The density of water .....  $\text{g/cm}^3$   
(iv) The surface tension of water is .....

2. Match the meanings of the following terms.

(a) Vaccine	•	•	The proteins produced by white blood cells to fight antigens.
(b) Antigen	•	•	A substance which contains weakened or dead pathogens.
(c) Antibody	•	•	A foreign substance such as pathogen in the blood which stimulates the production of antibody.
(d) Immunity	•	•	The ability of the body system to fight against pathogens.

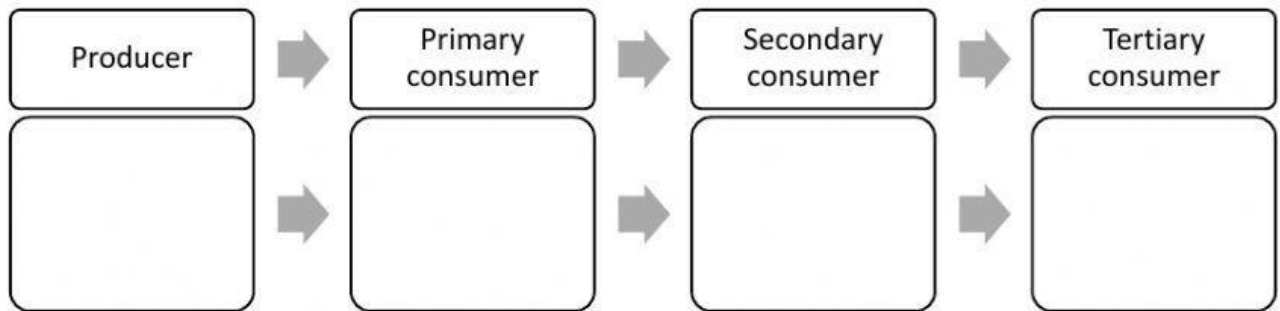
3. The diagram below shows four types of plants.  
Choose **'Yes'** the flowering plants or **'No'** the non-flowering plants.



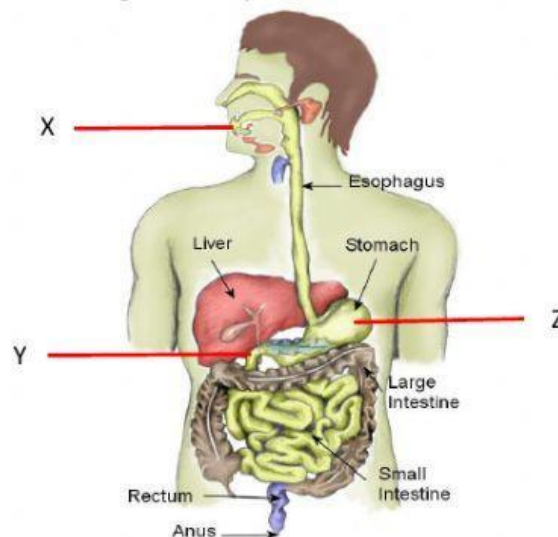
4. Choose the correct answer for the following statements :

Statement	Answer
Builds haemoglobin in red blood cells.	
Builds strong bones and teeth.	
Prevents Rickets and skin diseases.	
Prevents Scurvy and bleeding gum.	

5. The diagram below shows four living organisms. Complete the following food chain using the living organisms.



6. The diagram below shows the digestive system in the human body.



Match the following structures with the correct functions.

X	•	•	Digestion of fat
Y	•	•	Digestion of starch
Z	•	•	Digestion of protein