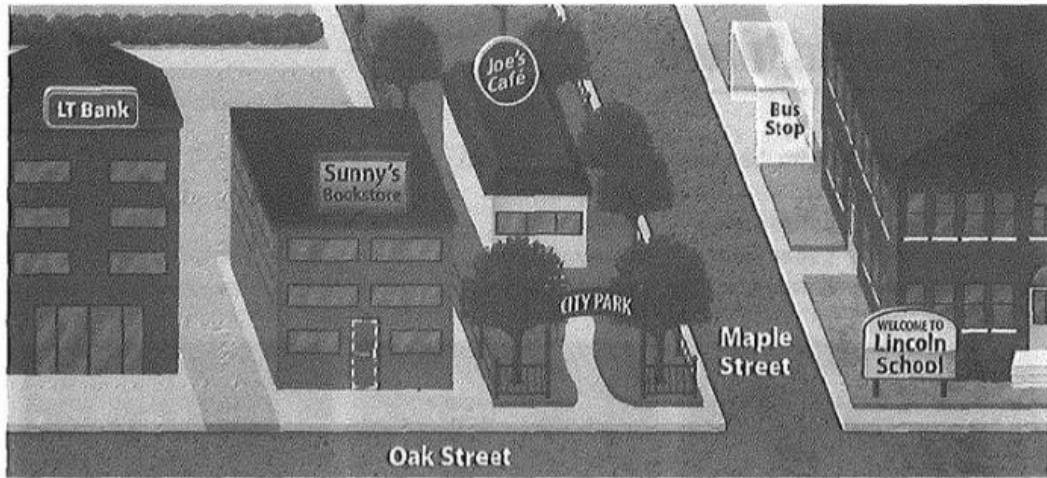


Quiz

1

Look at the picture. Complete the sentences with the correct words from the box.

across from between in next to ✓ on on the corner of

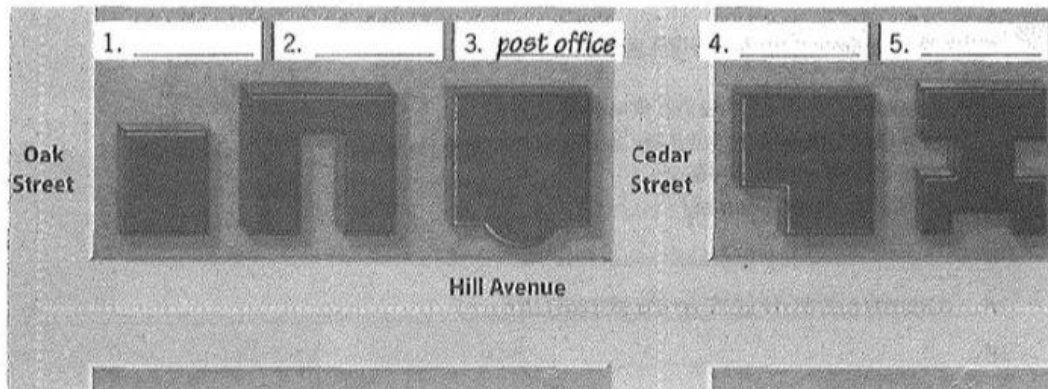


1. The bus stop is on Maple Street.
2. The park is between Oak Street and Maple Street.
3. Joe's Café is across from the park.
4. The bookstore is next to the bank and the park.
5. The school is on the corner of the park.
6. The bank is across from the bookstore.

2

Read the descriptions and complete the map. Then answer the questions.

- The drugstore is across from the post office.
- The Internet café is next to the drugstore.
- The bookstore isn't on Oak Street.
- The newsstand is next to the bookstore.



1. What is on the corner of Oak Street and Hill Avenue? _____
2. What is between the post office and the newsstand? _____
3. Is the Internet café on Hill Avenue? _____
4. Is the bookstore across from the drugstore? _____

3

Complete the directions with the correct words from the box.

blocks left take turn up ✓walk

► Start: 150 York Street

● End: 45 East Eighth Street

► Start on York Street. Walk ¹ to the corner of Elm Street.

Take a ² on Elm Street.

Go ³ Elm Street.

 ⁴ right on Fifth Avenue.

Walk four ⁵.

 ⁶ a right on Eighth Street.

● Go down Eighth Street. It's on the left.

4

Complete the conversations. Use the correct forms of *there is / are*.

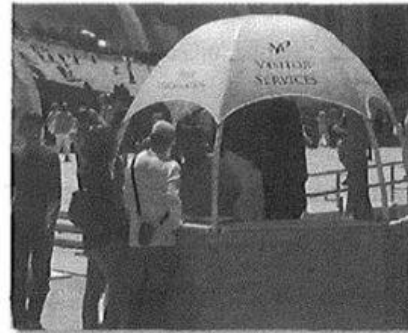
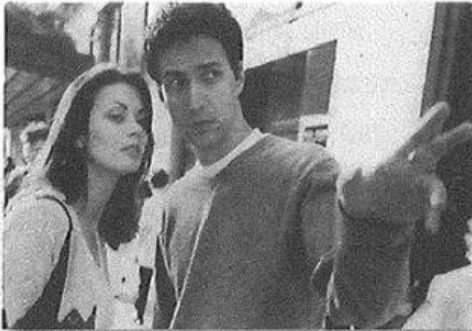
A: Excuse me. Are there any museums in this city? ¹

B: ². The museums are on First Street.

A: Great. And are there any zoos here?

B: No, ³, but there's an aquarium. It's near the art museum.

A: OK. Thanks.



C: Excuse me. ⁴ near here?

D: A swimming pool? Yes, ⁵.
 ⁶ one in the park.

C: Great. ⁷ near the park?

D: No, ⁸. The library is across from the school, about ten blocks from here.

C: Thank you very much.