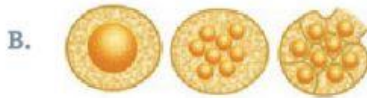
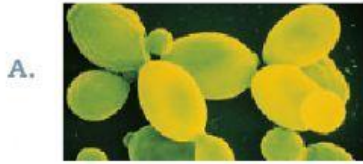


Observe the following pictures and answer questions 11, 12 and 13.



11 What characteristic is shown in the pictures above?

- A. Sexual reproduction
- B. Asexual reproduction
- C. Cloning
- D. Growth

12 What type of reproduction is represented in Picture a?

- A. Parthenogenesis
- B. Bipartition
- C. Gemmation
- D. Pluripartition

13 What kind of organisms have the type of reproduction represented on picture b?

- A. Yeast and corals
- B. Paramecium
- C. Protist
- D. Mosses and ferns

14 What is fertilization?

- A. The genetic exchange between two cells.
- B. The union of two gametes, female and male.
- C. The division of the zygote.
- D. The creation of an identical copy of an organism.

15 When does the process of cloning take place?

- A. When the nucleus of the cell is implanted in the sperm cell.
- B. When the chromosomes of the egg cell are separated.
- C. When the nucleus of a cell is implanted in the ovum.
- D. When the ribosomes of the cell are implanted in the ovum.