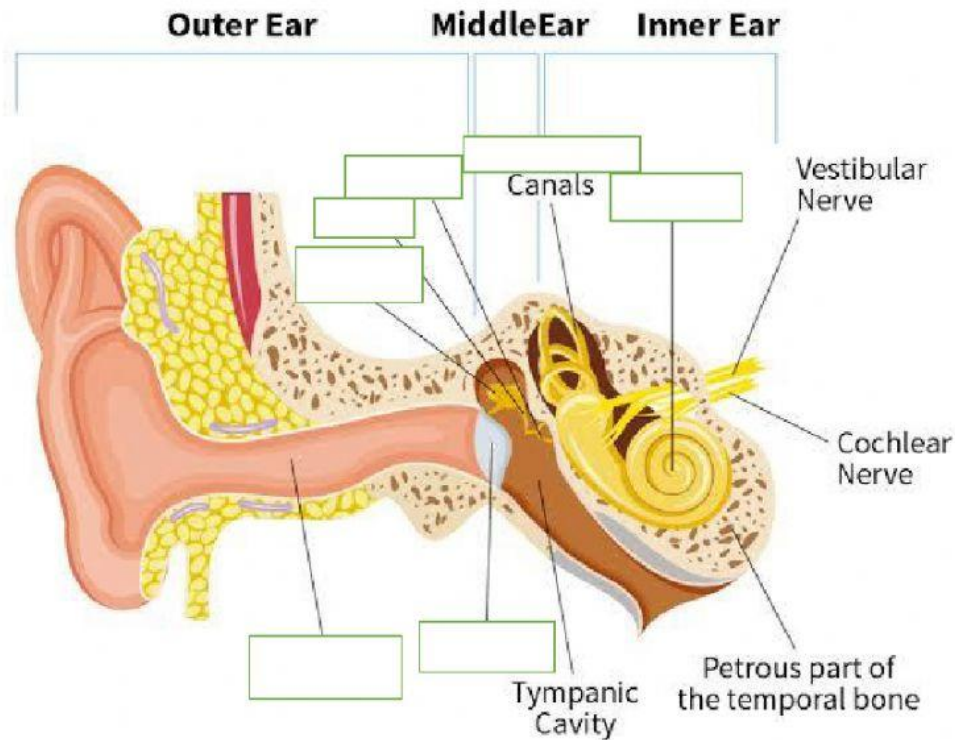


# The Human Ear



Cochlea

Incus

Eardrum

Ear Canal

Stapes

Semicircular

Malleus

1. It is the outer portion of the ear. It is used like a satellite dish to collect sound and transmit it inward where it can be translated into the appropriate medium.
2. This 2 cm canal helps to amplify sound as it enters the middle ear so it can be interpreted properly.
3. It is called the drum because sound waves will hit it and cause it to vibrate, which will take the sound from acting as wave energy and translate it to mechanical energy that can travel through the rest of the ear.
4. It is one of the smallest bones in the body. It is connected to the ear drum, and will vibrate as the drum is hit by the sound waves.
5. It sits on top of the hammer, and will collect the vibrations coming from the ear drum.

# The Human Ear