

NAME AND SURNAME: _____

SECOND GRADE UNIT 3 PRACTICE EXAM

1) Complete with the correct word



2) Complete with the correct word



1. Where's the sports centre?

--- The sports centre is the hotel.

2. Where's the bookshop?

--- The bookshop is the toyshop.

3. Where's the supermarket?

--- The supermarket is the bookshop.

4. Where's the restaurant?

--- The restaurant is opposite the .

5. Where's the clothes shop?

--- The clothes shop is the toyshop.

3) Answer the questions

Has your town got a train station?

.....

Has your town got a shopping center?

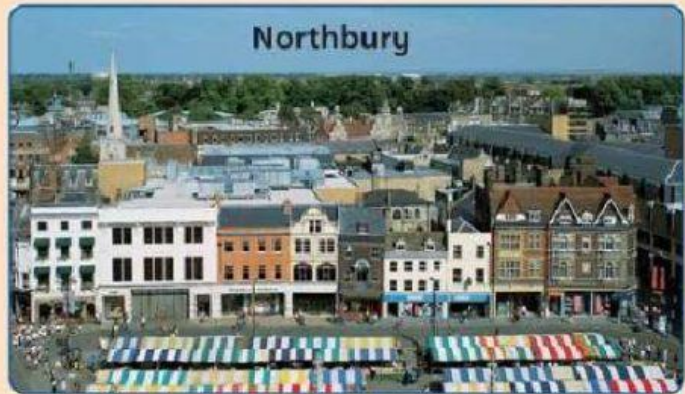
.....

Is your town big?

.....

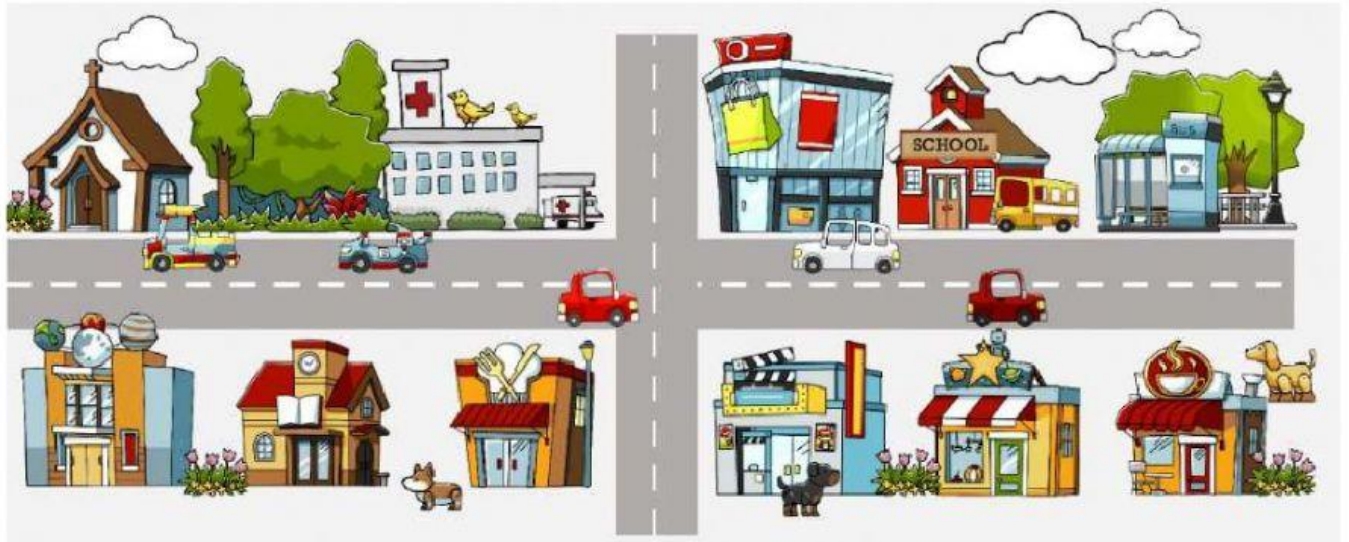
4) Read and answer true or false

My town's name is Northbury.
There are two cinemas in the town. There's a big park with a statue. On Saturdays and Wednesdays there's a market in the square.



- | | | |
|---|------|-------|
| 1. Northbury is a village. | TRUE | FALSE |
| 2. There's a park in Northbury. | TRUE | FALSE |
| 3. There aren't cinemas. | TRUE | FALSE |
| 4. There's a market every Saturday and Wednesday. | TRUE | FALSE |
| 5. There's a statue in the square. | TRUE | FALSE |

5) Look and answer true or false



1. The church is opposite the museum. **TRUE** **FALSE**
2. The library is between the restaurant and the park. **TRUE** **FALSE**
3. The café is next to the toy shop and opposite the cinema. **TRUE** **FALSE**

6) Complete with the correct word

1. I a computer.
2. You a hat.
3. He curly hair.
4. We trainers.
5. She a lamp.
6. They a cat.
7. It gloves.

7) Describe the....

[illegible]