

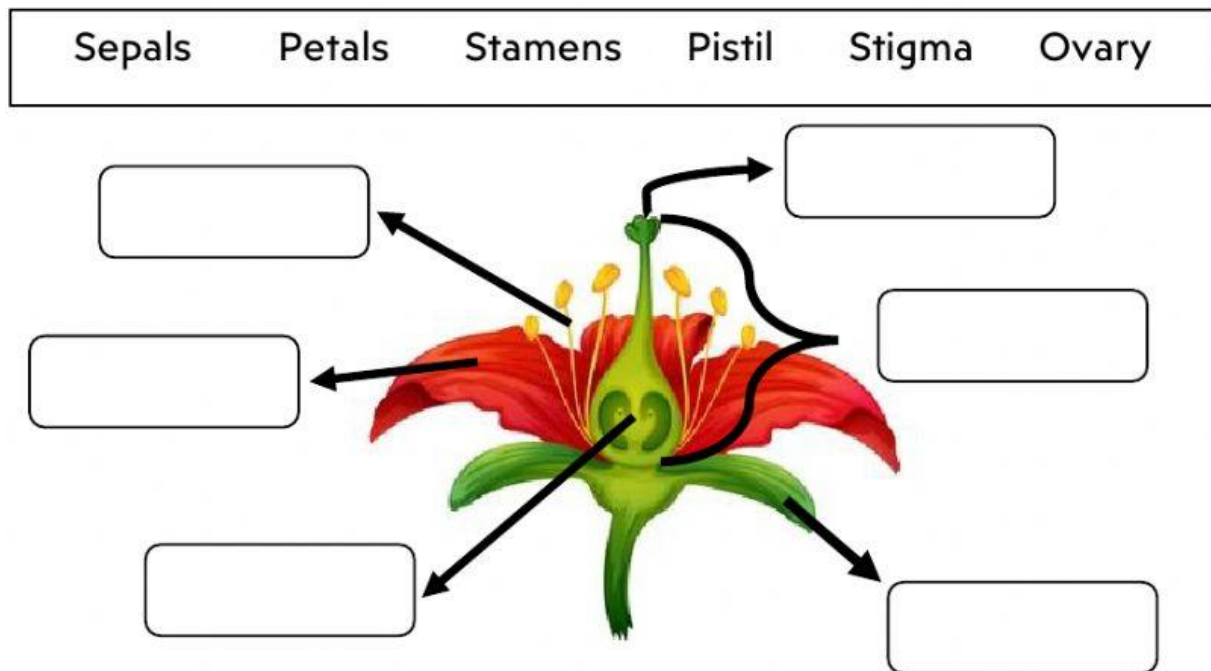
Natural Science Evaluation

Name: _____

Date: ____/____/____ **Grade:** _____ **Score:** ____/36 pts. **Mark:** _____

Objective: Evaluating the level of achievement in the lesson 2 about parts of the flower, pollination and Chilean plants.

I. Read the words from the box and identify the parts of the flower. (____/6 pts.)



II. Order the stages in life cycle of a plant that produce flowers. (____/ 5 pts.)

- ☐ Seed germination
- ☐ Flower pollination
- ☐ Growth of the young plant
- ☐ Transformation of the flower into a fruit
- ☐ Appearance of flowers on the plant

III. Circle the correct option. (___ / 12 pts.)

1. Which of the flower's structure receives the pollen during pollination? A) Stamens B) Petals C) Pistil	4. What's the name of the corporation that promotes the conservation of native plants and animals in Chile? A) Conin B) Conaf C) Coaniquem
2. Which of these plants you can find in the Northern area of Chile? A) Monkey puzzle tree B) Espino C) Tamarugo	5. Candelabra Cactus is in: A) The northern area of Chile B) The central area of Chile C) The southern area of Chile
3. In which part of the flower seeds are formed? A) In the stigma B) In the ovary C) In the sepals	6. Which of these options is not a conifer plant? A) Copihue B) Monkey puzzle tree C) Pine

IV. Write T if the sentence is true or F if it is false. (___ / 4 pts.)

- _____ Stamens are the female part of the plant.
- _____ The flower loses its petals when the fruit starts growing.
- _____ Copihue is not the Chilean national flower.
- _____ All the plants produce fruits and flowers.

V. Complete the blank spaces by using your knowledge. (___ / 9 pts.)

A. Write three examples of agents of pollination:

--	--	--

B. Write three examples of Chilean plants or trees:

--	--	--

C. Write three examples of agricultural crops from Chile:

--	--	--