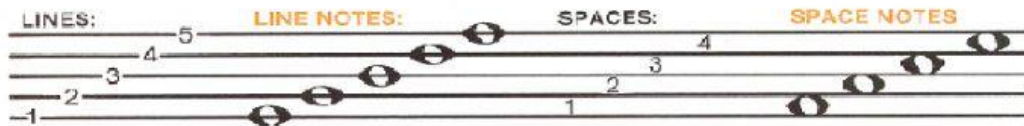
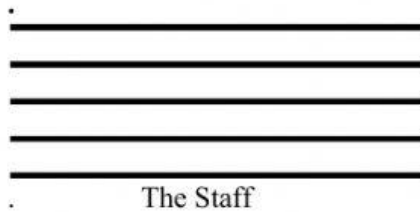


LESSON 1-Unit 1

The Staff & Pitches

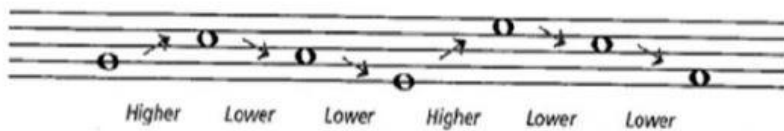
A staff is made up of 5 lines and 4 spaces.
Music is notated on a staff.



The lines of a staff are numbered or counted from the bottom to the top. The spaces between the lines of the staff are counted or numbered from the bottom to the top.

The oval shaped symbols on the lines and space in the diagram above are music notes. They are used to represent sound called pitches.

When the notes appear higher on the staff, they are higher in pitch. The notes are lower in pitch if they appear lower on the staff.



Exercise

1. Indicate the position of the note by putting L(line) or S(space) and the number. (L3, S1)



2. Identify if the 2nd note is higher or lower than the 1st note by putting an H(higher) or L(Lower).

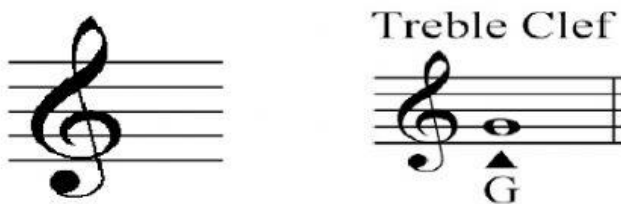


LESSON 2-Unit 1

The Treble Staff

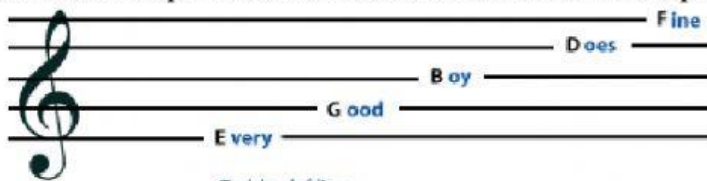
The musical pitches are named after the first 7 letters of the alphabet. (A-G) They can represent the full range of musical sound by their positioning on the staff. The CLEF signs organize the staff so that notes can be read easily.

The TREBLE CLEF also known as the G CLEF is used for pitches in the higher ranges. The curl of the treble clef circles the line on which the note G is placed.

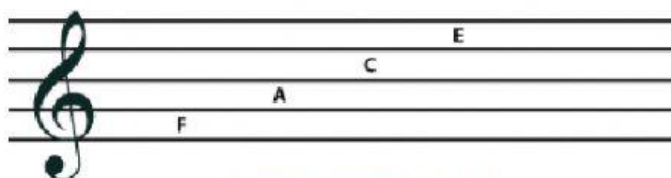


The names of the lines of the treble clef from bottom to top are E, G, B, D, F.

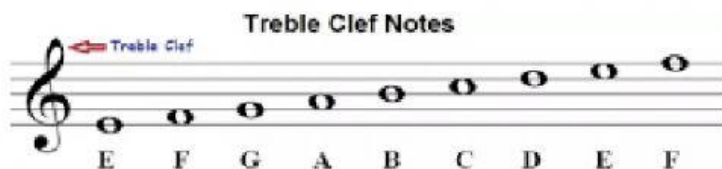
The names of the spaces of the treble clef from bottom to top are F, A, C, E.



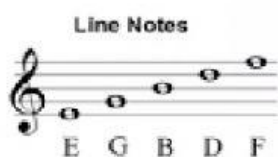
Treble clef lines:
"Every Good Boy Does Fine"
or
"Every Good Boy Deserves Fudge"



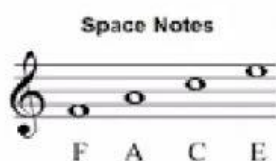
Treble clef spaces spell "FACE"



Treble Clef Notes



Line Notes



Space Notes

Exercise

1. What clef is used to represent higher pitch ranges? Ans: _____

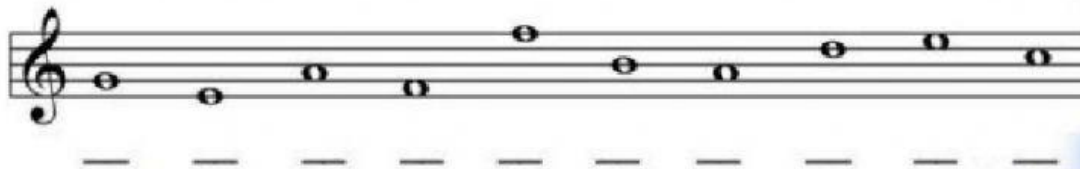
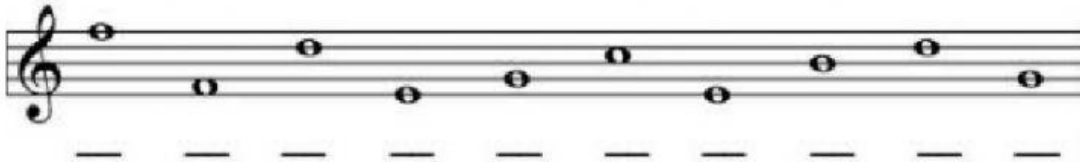
2. What is another name for the treble clef? Ans: _____

3. Name the notes below.



. E _ _ _ _ _

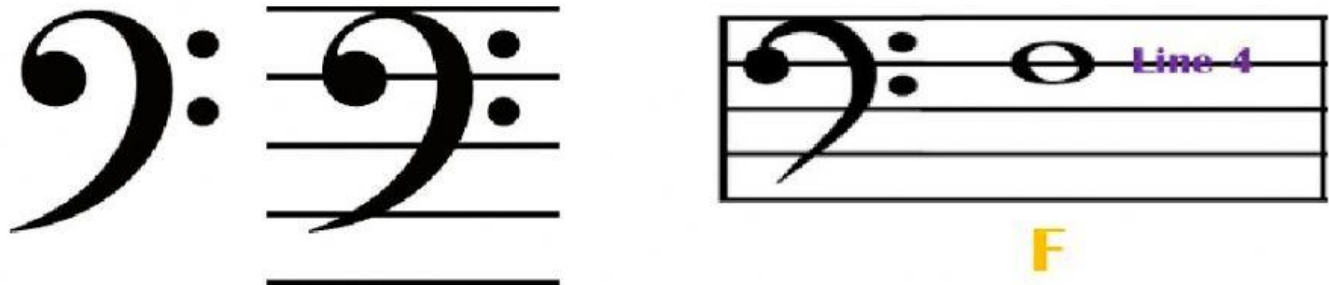
4. Identify The notes below and circle the notes that are on lines.



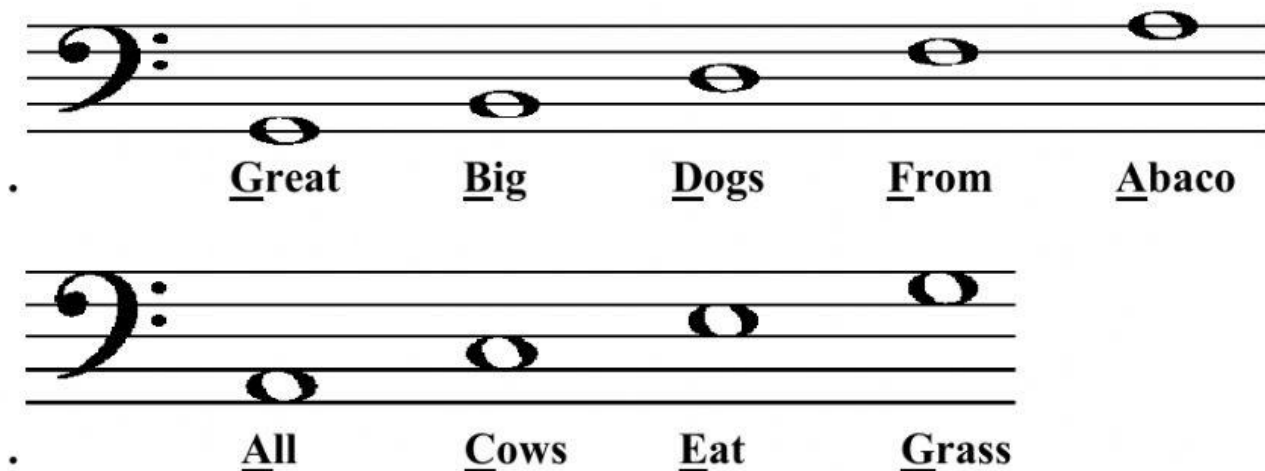
LESSON 3-Unit 1

The Bass Staff

Unlike the treble clef that is used for pitches in the higher ranges, The Bass Clef is used for lower pitch ranges. The dots of the bass clef go above and below the F Line (4th line) hence the bass clef's other name, the F clef.



The names of the lines of the bass clef from bottom to top are G, B, D, F, A.
The names of the spaces of the treble clef from bottom to top are A, C, E, G.



Bass Clef ↓

Bass Clef Notes

G A B C D E F G A

Line Notes:

G B D F A

Space Notes:

A C E G

- Ans:** _____

- Ans:** _____

-
- The bass line of 'The Rose Tree' is written on a single staff in bass clef. It consists of a sequence of 15 eighth notes: G2, A2, B2, C3, D3, E3, F3, G3, A3, B3, C4, D4, E4, F4, and G4. The notes are written on a five-line staff, with the G2 note on the first line and the final G4 note on the first line of the next octave.

-
- A musical staff in bass clef showing the bass line of the song. The notes are: G2, A2, B2, C3, D3, E3, F3, G3, A3, B3, C4, D4. The notes are placed on the lines and spaces of the staff, with some notes having a small 'x' above them.

A musical staff in bass clef showing the bass line of the song. The notes are: G2, A2, B2, G2, A2, B2, G2, A2, B2, G2, A2, B2. The notes are placed on the lines and spaces of the staff: G2 on the first line, A2 on the first space, B2 on the second line, G2 on the first space, A2 on the first line, B2 on the second line, G2 on the first space, A2 on the first line, B2 on the second line, G2 on the first space, A2 on the first line, B2 on the second line.