

# EQUIVALENZE

Completa le equivalenze

$0,513 \text{ Kg} = \underline{\hspace{2cm}} \text{ g}$

$830 \text{ Kg} = \underline{\hspace{2cm}} \text{ Mg}$

$40,1 \text{ g} = \underline{\hspace{2cm}} \text{ dag}$

$0,842 \text{ g} = \underline{\hspace{2cm}} \text{ cg}$

$0,634 \text{ Kg} = \underline{\hspace{2cm}} \text{ dag}$

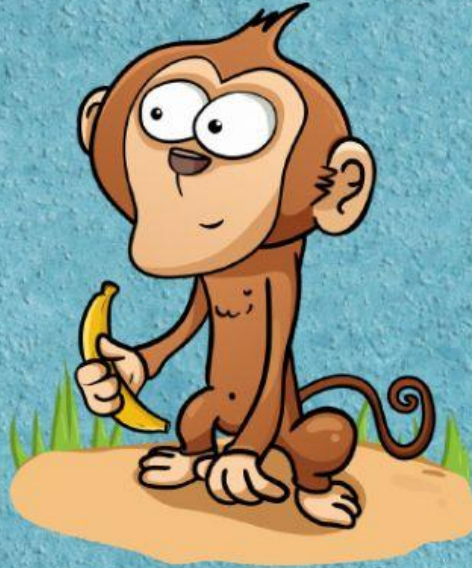
$8,559 \text{ Mg} = \underline{\hspace{2cm}} \text{ Kg}$

$0,041 \text{ dg} = \underline{\hspace{2cm}} \text{ mg}$

$4,9 \text{ dg} = \underline{\hspace{2cm}} \text{ g}$

$6.295,1 \text{ dg} = \underline{\hspace{2cm}} \text{ dag}$

$9.854,6 \text{ g} = \underline{\hspace{2cm}} \text{ hg}$



$7,304 \text{ dag} = \underline{\hspace{2cm}} \text{ dg}$

$7.784,5 \text{ dag} = \underline{\hspace{2cm}} \text{ hg}$

$0,029 \text{ hg} = \underline{\hspace{2cm}} \text{ g}$

$4 \text{ dg} = \underline{\hspace{2cm}} \text{ dag}$

$3,102 \text{ g} = \underline{\hspace{2cm}} \text{ dg}$

$7,195 \text{ Kg} = \underline{\hspace{2cm}} \text{ g}$

$9 \text{ Kg} = \underline{\hspace{2cm}} \text{ Mg}$

$2,19 \text{ g} = \underline{\hspace{2cm}} \text{ cg}$

$311 \text{ g} = \underline{\hspace{2cm}} \text{ hg}$

$73 \text{ g} = \underline{\hspace{2cm}} \text{ Kg}$

$0,046 \text{ dg} = \underline{\hspace{2cm}} \text{ mg}$

$88,7 \text{ cg} = \underline{\hspace{2cm}} \text{ g}$

$0,002 \text{ Mg} = \underline{\hspace{2cm}} \text{ Kg}$

$2 \text{ mg} = \underline{\hspace{2cm}} \text{ g}$

$75 \text{ cg} = \underline{\hspace{2cm}} \text{ dag}$

$0,2 \text{ g} = \underline{\hspace{2cm}} \text{ hg}$

$0,4 \text{ g} = \underline{\hspace{2cm}} \text{ hg}$

$19,3 \text{ dag} = \underline{\hspace{2cm}} \text{ Kg}$

$7,794 \text{ g} = \underline{\hspace{2cm}} \text{ cg}$

$46 \text{ Kg} = \underline{\hspace{2cm}} \text{ Mg}$

$0,23 \text{ Mg} = \underline{\hspace{2cm}} \text{ Kg}$

$53 \text{ Kg} = \underline{\hspace{2cm}} \text{ Mg}$

$226 \text{ mg} = \underline{\hspace{2cm}} \text{ cg}$

$0,081 \text{ g} = \underline{\hspace{2cm}} \text{ cg}$

$9 \text{ g} = \underline{\hspace{2cm}} \text{ Kg}$

$0,046 \text{ hg} = \underline{\hspace{2cm}} \text{ g}$

$143 \text{ dg} = \underline{\hspace{2cm}} \text{ hg}$

$575 \text{ mg} = \underline{\hspace{2cm}} \text{ g}$

$4,639 \text{ hg} = \underline{\hspace{2cm}} \text{ g}$

$94,3 \text{ g} = \underline{\hspace{2cm}} \text{ hg}$

