

Science Test Paper

Form 1

Chapter 1 – 4

Instruction :

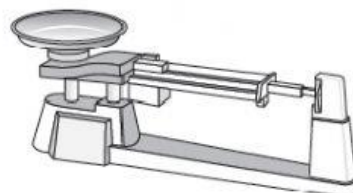
1. There are 11 questions in this paper.
2. All the answer must be in **small letter**
3. Students are required to answer ALL the question.
4. Students are required to screen shot their result for further references purpose.

1. a) Match the following apparatus with the correct names in the boxes provided.

Triple beam balance

Ammeter

Test Tube



b) Name the apparatus in 1 (a) based on the function stated below:

i. This apparatus is used to hold a chemical substance.	
ii. This apparatus is used to measure the electric current.	
iii. This apparatus is used to measure the mass of an object	

2. The diagrams below are the hazardous sign on a chemical substances

a) Name the hazardous sign correctly.



Explosive

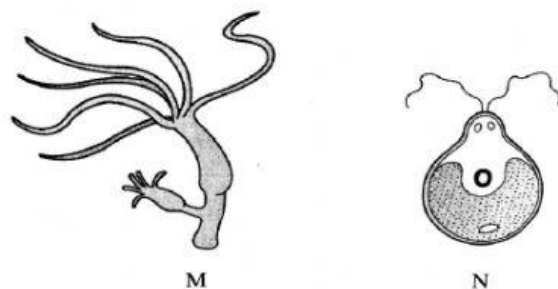
Flammable

Poison

3. Write TRUE for the correct statement and FALSE for the wrong statement.

i) Unit SI for temperature is Celsius	
ii) Measuring tape is used to measure the electric current.	
iii) Parallax error is the error caused by the observer when taking measurement.	
iv) Systemic error is the error caused by the instrument.	
v) Micrometer Screw Gauge is used to measure length of an object.	

4. The diagram below shows two organisms M and N.



a) Name the organisms

M : _____

N : _____

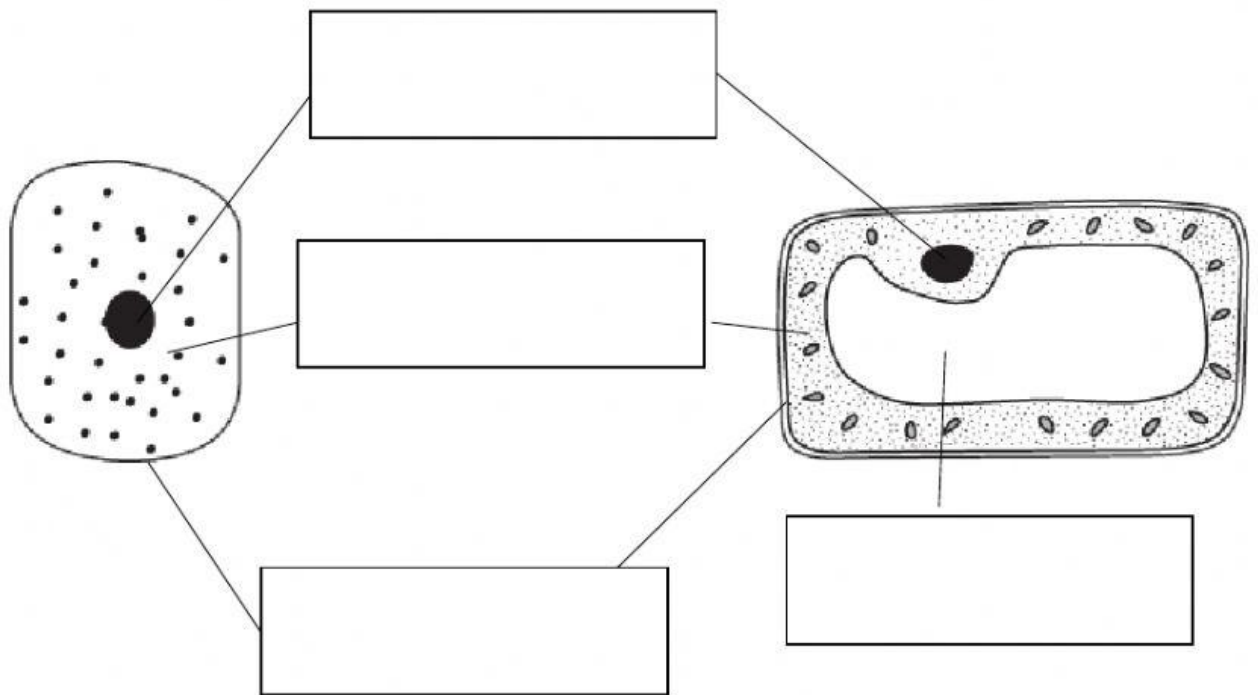
b) State the organisms M and N is unicellular or multicellular

M : _____

N : _____

c) State one similarity of the two organisms M and N.

5. The diagram are the animal cell and plant cell



a) Fill the blanks with the correct structures of cell using the word given below.

Mitochondria	Cell Wall	Cell Membrane	Nucleus
Chloroplast	Cytoplasm	Vacuole	

b) Name the cell structure based on the function using the word given in (a)

a)	Control all the activities in the cell
b)	Control the flow of materials in and out of the cell
c)	Acts as medium where the chemical reaction occur
d)	Contain cell sap for support.
e)	Produces energy
d)	Where photosynthesis process happen.

c) State three differences between plant cell and animal cell.

6. a) Match the types of fertilization for the following animals.

Golden Fish

Dolphin

Frog

Panda

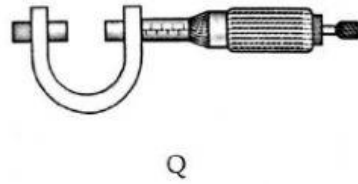
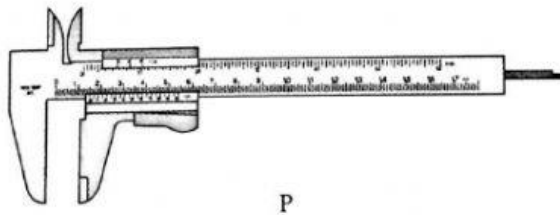
Internal
Fertilisation

External
Fertilisation

b) State the two differences between asexual reproduction and sexual reproduction.

Sexual Reproduction	Asexual Reproduction

7. There are two measuring instruments shows at below



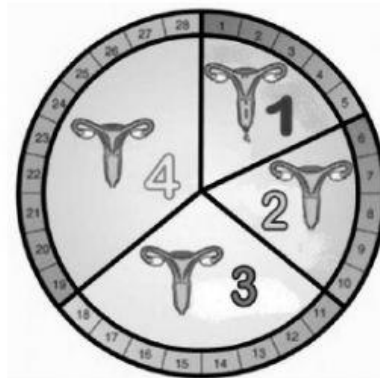
a) Name the above measuring instrument

P : _____

Q : _____

b) What is the function for P and Q?

8. Diagram below shows menstrual cycle for a women.



a) Please state the name of the phase

1 : _____

2 : _____

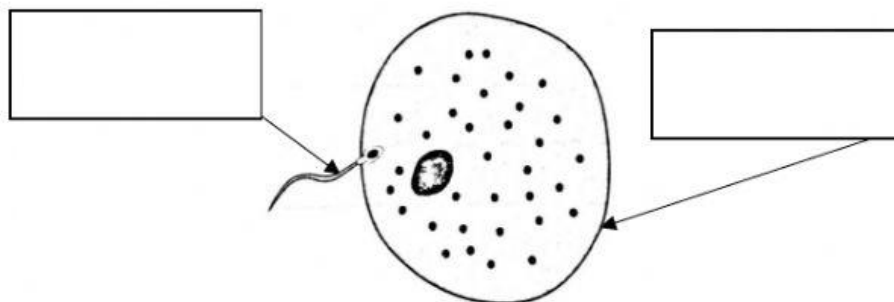
3 : _____

4 : _____

b) In which phase that a women having ovulation?

c) If 23rd May is Mary first day of menstruation phase, determine Mary's first day of menstruation phase of following month.

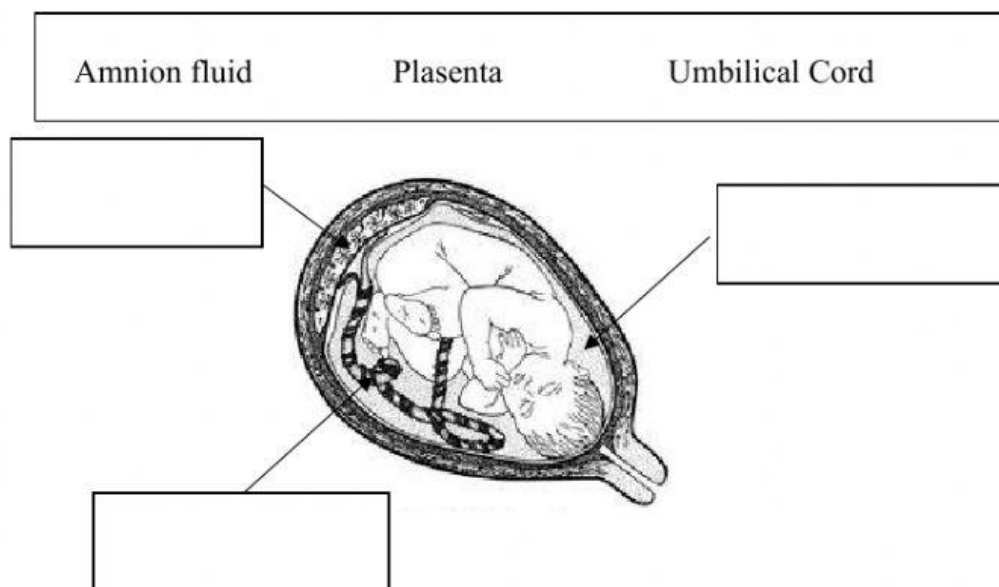
d) Diagram below show a process happen in a women body.



i) Name the cell involve in the above process.

ii) Name the above process

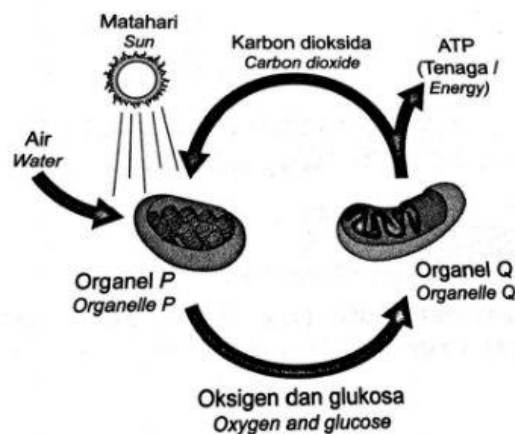
iii) Label the structure that help the development of the foetus in the diagram below with the words given.



iv) State the following structure based on their functions

• Place where exchange of oxygen, nutrients and waster materials through the mother's blood and the foetus.	
• Acts as a cushion to protect the foetus from injuries	
• Contain blood vessel inside tube and transport blood to and from the foetus.	
• Membrane that forms a sac and contain fluids.	

9. The diagram below show the process happen in animal and plant.



a) Name the organell (structure of cell) P and Q

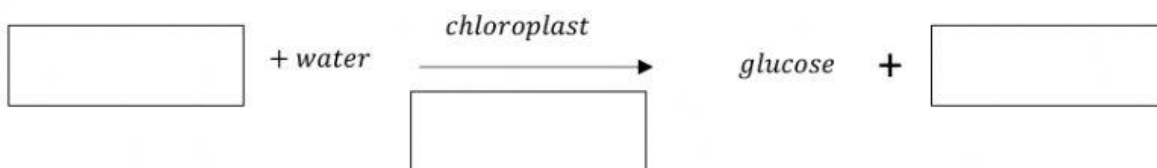
P : _____

Q : _____

b) Name the process that happen in Organell P.

c) What is the gas that released by Organell P and absorbed by Organell Q.

d) Complete the word equation below to show plant photosynthesis process

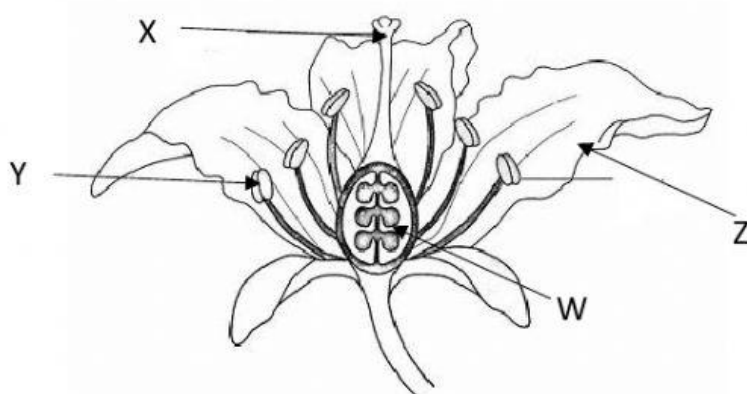


e) Complete the word equation below to show cell respiration process



f) Predict what happen to a plant that placed in a darkroom for a week. Justify your answer.

10. The diagram below shows different parts of a flower



a) Name the parts of flower

W : _____

X : _____

Y : _____

Z : _____

b) What is the function of Y?
