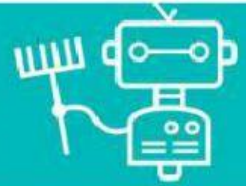


# PRACTICE

1. Read the first part of the article and decide which answer (A, B, C or D) best fits each gap (1-8).

## DOMESTIC ROBOTS



A domestic robot, or service robot, is a robot that is used for jobs around the house. There are only a <sup>0</sup> limited number of models around at the moment, though some people have suggested that they could become more <sup>1</sup> \_\_\_\_\_ in the future. We found a wide <sup>2</sup> \_\_\_\_\_ of them on the web.

### A FLOOR CLEANING ROBOTS

These are the most popular type of domestic robots currently available. They move quickly around hard-surface flooring and carpets removing dirt and pet hair – <sup>3</sup> \_\_\_\_\_ obstacles like furniture and toys, and automatically finding their <sup>4</sup> \_\_\_\_\_ around.

### B GRASS CUTTING ROBOTS

These sophisticated machines <sup>5</sup> \_\_\_\_\_ you to sit back in your garden and watch them do all the work! You just <sup>6</sup> \_\_\_\_\_ up a wire line around the area you want to cut, and switch it on.

### C SECURITY ROBOTS

These have night-vision cameras that can detect <sup>7</sup> \_\_\_\_\_. You can programme them to move around inside or outside your house – and if anything <sup>8</sup> \_\_\_\_\_ happens, they will automatically video it and send you a text or email to tell you.



- |   |                     |                   |                    |                   |
|---|---------------------|-------------------|--------------------|-------------------|
| 0 | <b>A</b> limited    | <b>B</b> little   | <b>C</b> minor     | <b>D</b> narrow   |
| 1 | <b>A</b> frequent   | <b>B</b> common   | <b>C</b> general   | <b>D</b> normal   |
| 2 | <b>A</b> mixture    | <b>B</b> type     | <b>C</b> quality   | <b>D</b> variety  |
| 3 | <b>A</b> missing    | <b>B</b> leaving  | <b>C</b> avoiding  | <b>D</b> skipping |
| 4 | <b>A</b> way        | <b>B</b> road     | <b>C</b> direction | <b>D</b> track    |
| 5 | <b>A</b> let        | <b>B</b> admit    | <b>C</b> allow     | <b>D</b> make     |
| 6 | <b>A</b> take       | <b>B</b> set      | <b>C</b> pick      | <b>D</b> get      |
| 7 | <b>A</b> travel     | <b>B</b> progress | <b>C</b> transport | <b>D</b> movement |
| 8 | <b>A</b> suspicious | <b>B</b> doubtful | <b>C</b> wrong     | <b>D</b> unsure   |

2. Read the second part of the article more carefully and match the paragraph titles to the paragraphs D-H.

**D** Our favourite example of this type of robot is called UNO. It dances, plays football with you, shoots table tennis balls, sings songs – and it can recognise your voice, so that it obeys only your orders. It looks really cute too! You can also get electronic pets for the younger members of the family.

**E** These are similar to toy robots, but with a more serious purpose. A lot of them are designed to help older people by providing company and sometimes helping with the household tasks. In the future, we expect to see robots that are able to understand language, have conversations with you, and understand human emotions, so that they know what to do.

**F** A step up from social robots, these can allow you to visit a distant location and explore it as if you were there. They let healthcare workers check on patients, for example. Also, children who cannot leave their homes because they are ill or disabled can attend school using one of these!

**G** You need a highly-specialised robot if you want it to do the cooking for you. The one we saw was developed by a German university. It can cook pancakes and sausages, and even make sandwiches. We're not so sure about this one – you might want to supervise if it's using the cooker! You don't want the house to burn down!

**H** Our favourite of the bunch, this one is for people who can't get out of bed in the morning. It can be set to let you sleep a bit longer, but after that – when your extra time is up – it will scream loudly. If that doesn't work, it will jump off the bedside table and roll around the room flashing its lights and making a noise until you finally get up!

- 1 Kitchen robots \_\_\_\_\_
- 2 'Telepresence' (remote) robots \_\_\_\_\_
- 3 Social robots \_\_\_\_\_
- 4 Robot alarm clock \_\_\_\_\_
- 5 Toy robots \_\_\_\_\_

3. Which robot A-H would you recommend for these people?

- 1 'I spend a lot of time away from home, and the house is often empty.' \_\_\_\_\_
- 2 'It's my nephew's birthday next month. He's 12 years old.' \_\_\_\_\_
- 3 'I'm often late for school in the morning.' \_\_\_\_\_
- 4 'My grandma lives a long way from us and often gets lonely. She could also use some help around the house.' \_\_\_\_\_
- 5 'I hate making my own meals.' \_\_\_\_\_

4. Match the **highlighted** words and phrases in the text to the definitions.

- 1 designed to be good at a particular thing \_\_\_\_\_
- 2 pleasant and attractive \_\_\_\_\_
- 3 when you are with a person or people \_\_\_\_\_
- 4 watch to make sure everything is done correctly \_\_\_\_\_
- 5 far away \_\_\_\_\_

5. Where do you think the article was published?

- A in a technical manual
- B on a technology website
- C in a science school book

